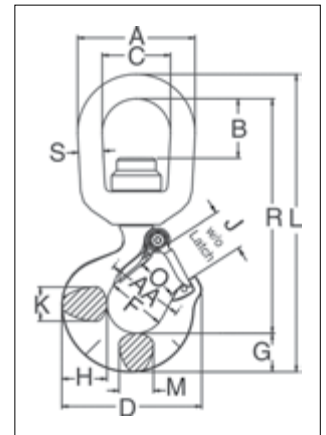


L-3322B



- Bearing design allows hook to rotate freely under load.
- Capacities ranging from 2 through 15 metric tons.
- Forged, Quenched & Tempered.
- Low profile hook tip designed to utilize Crosby S-4320 or PL-N latch kit.
- L-3322 hooks incorporate QUIC-CHECK® deformation and angle indicators. (For detailed information, see the Crosby Value Added page at the beginning of this section.)



4



APPLICATION AND WARNING INFORMATION
SECTION 17

L-3322B Swivel Hooks with Bearing

Working Load Limit (t)	Hook ID Code*	Stock No.	Weight Each (kg)	Dimensions (mm)																Rep. Latch Stock No.
				A	B	C	D	F	G	H	J	K	L	M	O	R	S	AA*		
2	GA	1028609	1.13	76.2	38.1	44.5	91.2	38.1	25.4	29.5	26.9	22.4	194	22.4	25.4	152	16.0	50.8	1096421	
3	HA	1028618	1.72	88.9	39.6	50.8	101	41.1	28.7	33.3	30.2	23.9	218	23.9	27.7	170	19.1	50.8	1096468	
5	IA	1028627	3.17	101	39.6	57.2	122	50.8	36.6	41.4	38.1	33.3	262	28.7	34.5	203	22.4	63.5	1096515	
7	JA	1028636	6.35	127	49.3	69.9	159	63.5	46.0	52.3	45.2	42.2	326	36.6	40.9	251	28.7	76.2	1096562	
11	KA	1028645	10.1	142	52.1	79.2	191	76.2	57.2	66.8	61.2	47.8	387	41.4	52.8	298	31.8	101	1096609	
15	LA	1028654	16.3	180	91.9	104	211	82.6	65.8	74.7	66.5	55.6	473	49.3	57.7	366	38.1	101	1096657	

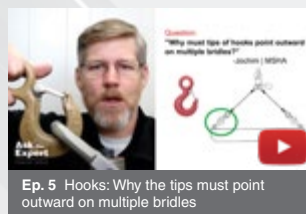
4.5:1 Design Factor. Maximum allowable proof load is 2.5 times Working Load Limit. *Deformation indicators.



Ep. 21 Grinding and wear allowance on rigging hardware



Ep. 31 Crosby Shurloc® Hook inspection requirements



Ep. 5 Hooks: Why the tips must point outward on multiple bridle

VIDEO PODCAST SERIES

Our experts answer some of your most common safe rigging, lifting, and securement questions in our video podcast series, *Ask the Expert*.

Watch all episodes and submit your questions at thecrosbygroup.com/podcast, and subscribe to our YouTube channel to catch every new video as soon as it's released.

Ask the Expert

VIDEO PODCAST