

## PLAIN TROLLEYS



Accolift® Plain Trolleys are light and easy to adapt to a wide range of beams. The trolley wheels include lifetime lubricated ball bearings for maintenance free operation. A perfect match to make the Accolift electric or hand chain hoist and its load horizontally mobile.

**Construction Features:**

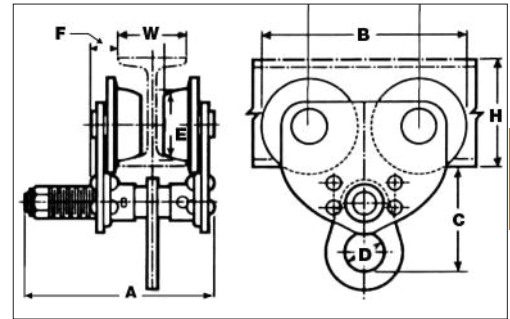
**Side Frame:** Side plates are rugged rolled steel

**Wheels:** Crown tread allows operation on tapered or flat flange beams

**Bearings:** Shielded, lifetime lubricated, single row ball bearings.

**Suspension Lug:** Pivot mounted suspension shaft designed to equally distribute the load to all wheels.

**Options:** Optional equipment available for this product includes bronze wheels and nickel plated body. Please contact the factory for more information.


**3**

Model Number	Capacity (Tonnes)	W Beam Width Min. - Max. (mm)	Dimensions (mm)								Min. Beam Size H	Min. Beam Radius (mm)	Net Weight (kg)
			A	B	C	D	E	F	G				
1650010	0.454	76 to 127	206	175	130	46	56	28	89	102	610	6.35	
1650020	0.907	76 to 127	206	231	130	46	81	28	122	127	762	9.98	
1650030	1.814	76 to 152	236	269	155	61	99	36	142	152	914	18.60	
1650040	2.722	76 to 152	251	312	191	66	114	48	163	178	914	28.58	
1650050	4.536	127 to 178	282	353	231	76	124	53	183	254	1219	44.00	

## GEARED TROLLEYS



Accolift® Geared Trolleys are light and easy to adapt to a wide range of beams. The trolley wheels include lifetime lubricated ball bearings for maintenance free operation. A perfect match to make the Accolift electric or hand chain hoist and its load horizontally mobile for short distances and accurate load positioning.

**Construction Features:**

**Side Frame:** Side plates are rugged rolled steel

**Wheels:** Crown tread allows operation on tapered or flat flange beams

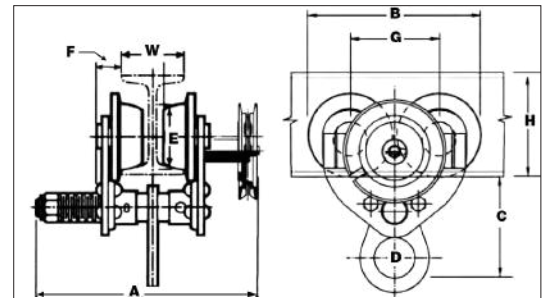
**Bearings:** Shielded, lifetime lubricated, single row ball bearings.

**Hand Chain:** Electric welded, close link galvanized coil chain, accurately and uniformly sized to seat properly in handwheel pockets.

**Chain Guide:** Steel chain guide.

**Suspension Lug:** Pivot mounted suspension shaft designed to equally distribute the load to all wheels.

**Options:** Optional equipment available for this product includes bronze wheels, stainless steel hand chain and nickel plated body. Please contact the factory for more information.



Model Number	Capacity (Tonnes)	W Beam Width Min. - Max. (mm)	Hand Chain Drop (m)	Dimensions (mm)								Min. Beam Size H	Min. Beam Radius (mm)	Net Weight (kg)
				A	B	C	D	E	F	G				
1650110	0.454	76 to 127	5.5	274	231	130	46	81	28	122	127	762	15.88	
1650120	0.907	76 to 127	5.5	274	231	130	46	81	28	122	127	762	15.88	
1650130	1.814	76 to 152	5.5	305	269	155	61	99	36	142	152	914	25.86	
1650140	2.722	76 to 152	5.5	330	312	191	66	114	48	163	178	914	35.83	
1650150	4.536	127 to 178	5.5	381	353	231	76	124	53	183	254	1219	51.71	
1650160	9.072	127 to 191	5.5	432	353	279	81	124	53	183	254	1219	102.97	