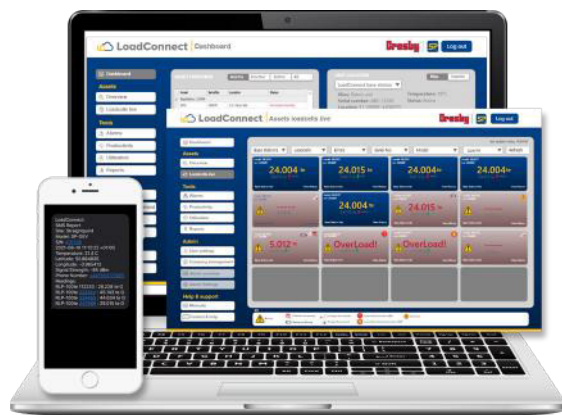


# LoadConnect Software



Crosby Straightpoint LoadConnect, connected to BaseStation, is a cloud-based solution to monitor loads and line tensions from any distance and from anywhere in the world. Stay connected, protect assets, reduce site visits, and improve safety.

- Dashboard overview.
- Live load data.
- Error reporting.
- Productivity and utilization graphs.
- Regular email reporting.
- SMS alerts.
- Connect to BOLT to monitor tension on cables.
- Connect to SP loadcells to monitor loads.

## BaseStation

How it works:



| Part Numbers<br>SP          | BaseStation   |
|-----------------------------|---|
| Crosby                      | 2789574   |
| Required Power Supply       | 9 to 28 V DC  |
| Radio Frequency             | 2.4 GHz (License Free)  |
| Maximum Number of Loadcells | 16  |
| Range                       | Up to 500 meters / 1,640 feet   |
| Operating Temperature Range | -10°C to 50°C / 14°F to 122°F   |
| Backup Battery Life         | 16 hours  |
| Input Option                | 1x 4-20mA (2 wire) OR 1x mV/V & Wireless  |
| Weight                      | 2.75 kg / 6.06 lb   |
| Network Supported           | 4G / 3G   |
| Frequency Band              | LTE-TDD B34/B38/B39/B40/B41<br>LTE-FDD<br>B1/B2/B3/B4/B5/B7/B8/B12/B13/<br>B18/B19/B20/B25/B26/B28/B66<br>UMTS/HSPA+<br>B1/B2/B4/B5/B6/B8/B19 |
| SIM Type                    | Micro SIM (NOT INCLUDED)  |
| Alert Functionality         | via SMS (up to 3 pre defined numbers)<br>Optional subscription to online dashboard  |
| IP Rating                   | IP67 / NEMA6  |
| Dimension                   | 560 x 260 x 90 mm - Antennas included   |

Data option to be enabled on the SIM card used for full functionality.  
User configuration required via free software supplied.