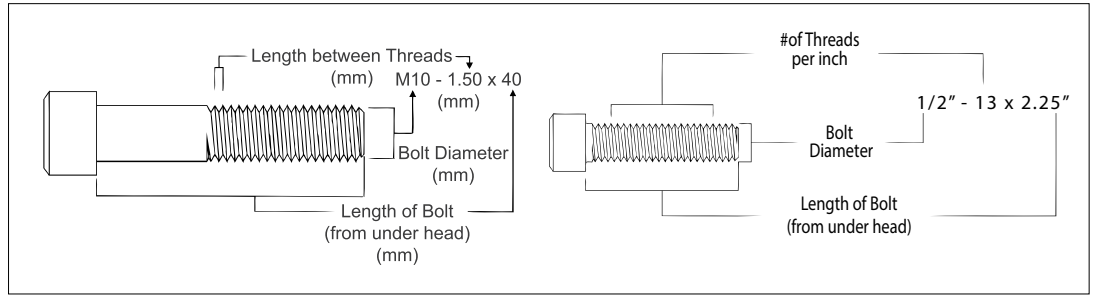
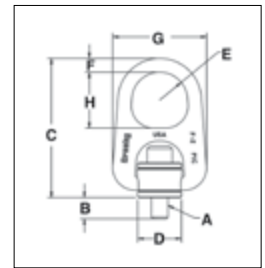


HR-1000



- Forged bail provides the following:
 - Easily readable raised lettering showing the name Crosby or "CG" and PIC for material traceability.
 - Greater durability providing the increased "Toughness" desired in potentially abusive field conditions.
 - Larger opening than standard hoist ring bail.
- Top washer is color-coded for easy identification (Red for UNC threads and Silver for Metric threads)
- The Working Load Limit and Recommended Torque value are permanently stamped into each washer.
- Individually Proof Tested to 2-1/2 times Working Load Limit.
- Available in both UNC thread and Metric thread style.
- UNC bolt specification is an alloy socket head cap screw to ASTM A 574. Metric bolt specification is a Grade 12.9 alloy socket head cap screw to DIN 912.
- BOLT SIZE IDENTIFICATION: The size of the bolt will be stated as in the drawing. Illustration shows meaning of each dimension given.



HR-1000 UNC Threads

Frame Size No.	Stock No.	Working Load Limit (kg)	Torque (Nm)	Bolt Size A (in)	Dimensions (mm)								Weight Each (kg)
					Eff. Thread Projection Length B	C	D	Radius E	F	G	H		
1	1068002	363	10	5/16 - 18 x 1.50	13.2	93.7	24.6	15.7	11.2	57.7	35.1	.27	
1	1068006	454	16	3/8 - 16 x 1.50	13.2	93.7	24.6	15.7	11.2	57.7	35.1	.28	
2	1068010	1134	38	1/2 - 13 x 2.25	17.5	159	49.8	31.8	.75	107	63.5	1.38	
2 †	1068014	1134	38	1/2 - 13 x 2.75	30.2	159	49.8	31.8	.75	107	63.5	1.39	
2	1068018	1814	81	5/8 - 11 x 2.25	17.5	159	49.8	31.8	.75	107	63.5	1.41	
2 †	1068022	1814	81	5/8 - 11 x 3.00	36.6	159	49.8	31.8	.75	107	63.5	1.44	
2	1068026	2268	136	3/4 - 10 x 2.50	23.9	159	49.8	31.8	.75	107	63.5	1.47	
2 †	1068030	2268	136	3/4 - 10 x 3.00	36.6	159	49.8	31.8	.75	107	63.5	1.50	
3	1068034	3175*	136	3/4 - 10 x 3.00	21.6	220	75.2	41.4	25.4	159	82.6	4.58	
3 †	1068038	3175*	136	3/4 - 10 x 3.50	34.3	220	75.2	41.4	25.4	159	82.6	4.63	
3	1068042	3629	217	7/8 - 9 x 3.00	21.6	220	75.2	41.4	25.4	158	82.6	4.63	
3 †	1068046	3629	217	7/8 - 9 x 3.50	34.3	220	75.2	41.4	25.4	158	82.6	4.71	
3	1068050	4536	312	1 - 8 x 3.50	34.3	220	75.2	41.4	25.4	158	82.6	4.76	
3 †	1068054	4536	312	1 - 8 x 4.50	59.7	220	75.2	41.4	25.4	158	82.6	4.86	
4	1068058	6804	637	1-1/4 - 7 x 5.00	53.1	285	94.2	50.8	31.8	199	102	9.93	
4	1068062	10890	1085	1-1/2 - 6 x 5.50	65.8	285	94.2	50.8	36.6	199	102	10.4	

5:1 Design Factor. *4.5:1 Design Factor when tested in 90 degree orientation. †Long Bolts are designed to be used with soft metal (i.e., aluminum) workpiece.

HR-1000M Metric Threads

Frame Size No.	Stock No.	Working Load Limit (kg)			Torque Nm	Bolt Size A	Dimensions (mm)								Weight Each (kg)
		5:1 Design Factor*	4:1 Design Factor*				Eff. Thread Projection Length B	C	D	Radius E	F	G	H		
1	1068307	400	500	10	M8 x 1.25 x 40	15.2	93.7	24.6	15.7	11.2	57.7	35.1	0.3		
1	1068316	450	550	16	M10 x 1.50 x 40	15.2	93.7	24.6	15.7	11.2	57.7	35.1	0.3		
2	1068325	1050	1300	38	M12 x 1.75 x 55	15.5	162	49.8	31.8	19.1	107	63.5	1.5		
2	1068334	1900	2400	81	M16 x 2.00 x 65	25.5	162	49.8	31.8	19.1	107	63.5	1.5		
2	1068343	2150	2700	136	M20 x 2.50 x 70	30.5	162	49.8	31.8	19.1	107	63.5	1.6		
3	1068352	3000	3750	136	M20 x 2.50 x 80	25.4	220	75.2	41.4	25.4	159	82.6	4.6		
3	1068361	4200	5250	312	M24 x 3.00 x 90	35.4	220	75.2	41.4	25.4	159	82.6	4.8		
4	1068370	7000	8750	637	M30 x 3.50 x 140	66.2	285	94.2	50.8	31.8	199	102	9.7		
4	1068389	11000	13750	1005	M36 x 4.00 x 130	56.2	285	94.2	50.8	31.8	199	102	10.2		

*Individually proof loaded to 2-1/2 times the Working Load Limit based on the 4:1 Design Factor.

