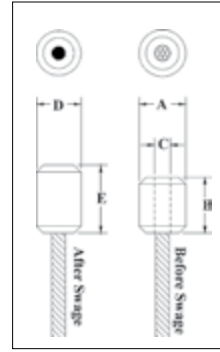


S-409



- Swage button terminations have an efficiency rating of 98% based on the catalog strength of wire rope.
- Special processed, low carbon steel.
- COLD TUFF® for better swageability.
- Stamp for identification after swaging without concern for fractures (as per directions in the Wire Rope End Terminations User's Manual).
- S-409 Buttons are recommended for use with 6 x 19 or 6 x 37, IPS or XIP (EIP), RRL, FC or IWRC wire rope. Before using any National Swage fitting with any other type lay, construction or grade of wire rope, it is recommended that the termination be destructive tested and documented to prove the adequacy of the assembly to be manufactured.



S-409 COLD TUFF® Buttons

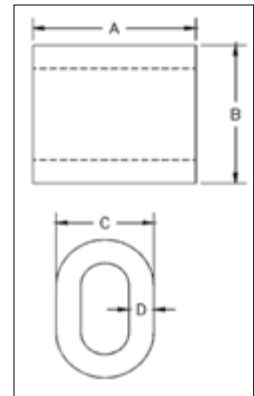
S-409 Steel Swage Button Specifications										Swager / Die Data	
S-409 Stock No.	Size No.	Rope Size		Weight Per 100 (kg)	Before Swage Dimensions (mm)			After Swage Dimensions (mm)		Die Description	Stock No. 500 Tons 1000 Tons 1500 Tons 5 x 7
		(in)	(mm)		A	B	C	D Maximum After Swage Dimensions	E Length*		
1040171	1 SB	1/8	3	.91	10.7	12.7	3.56	10.2	15.5	1/8 - 1/4 Button	1191621
1040215	3 SB	3/16	5	1.81	14.2	17.8	5.08	13.2	21.3	1/4 1st Stage	1197528
1040251	5 SB	1/4	6-7	3.63	17.3	26.9	7.87	14.7	33.5	1/8 - 1/4 Button	1191621
1040297	7 SB	5/16	8	7.26	22.4	28.7	9.14	19.6	33.8	3/8 1st Stage	1192364
1040313	8 SB	3/8	9-10	6.80	22.4	37.6	10.7	19.6	42.9	3/8 1st stage	1192364
1040331	9 SB	7/16	11	13.6	28.7	41.4	12.2	26.2	49.3	1/2 1st Stage	1192408
1040359	10 SB	1/2	13	22.7	33.3	48.0	14.0	29.5	55.1	5/8 Socket	1192907
1040377	11 SB	9/16	14	31.8	36.6	51.3	15.5	32.8	61.2	9/16 - 5/8 Button	1191665
1040395	12 SB	5/8	16	45.4	39.6	61.5	17.0	36.1	73.4	3/4 Socket	1192925
1040411	13 SB	3/4	18-20	59	42.7	69.6	20.3	39.6	82.6	3/4 1st Stage	1192462
1040439	14 SB	7/8	22	100	50.8	83.1	23.9	45.7	98.0	7/8 1st Stage	1192480
1040457	15 SB	1	25-26	141	57.2	93.2	26.9	52.1	111	1 1st Stage	1192505
1040475	16 SB	1-1/8	28-29	204	65.0	103	30.2	58.4	122	1-1/8 1st Stage	1192523
1040493	17 SB	1-1/4	31-32	295	71.4	116	33.8	65.0	138	1-3/8 Socket	1193023

* NOTE: Length is measured from outside end of termination. Fittings designed only to be used on exact sizes listed.

S-506



- For turnback wire rope splicing.
- Special processed low carbon steel.
- Turnback terminations have efficiency ratings of 94% based on the catalog strength of wire rope.
- COLD TUFF® for better swageability and low temperature toughness.
- S-506 Sleeves are recommended for use with 6 x 19 or 6 x 37, IPS or XIP (EIP), RRL, FC or IWRC wire rope. Before using any National Swage fitting with any other type lay, construction or grade of wire rope, it is recommended that the termination be destructive tested and documented to prove the adequacy of the assembly to be manufactured.
- Resists cracking when swaged (equals or exceeds stainless steel sleeves).
- Stamp for identification after swaging without concern for fractures (as per directions in the Wire Rope End Termination User's Manual).



S-506 COLD TUFF® Duplex Non-Tapered Sleeves

S-506 Steel Duplex Non-Tapered Sleeve Specifications										Swager / Die Data	
S-506 Stock No.	Rope Size		Weight Per 100 (kg)	Pkg. Qty.	Before Swage Dimensions (mm)				Max. After Swage Dimensions (mm)	Die Description	Stock No. 500 Tons 1000 Tons 1500 Tons 5 x 7
	(in)	(mm)			A	B	C	D			
1039334	5/16	8	7.7	200	31.8	26.9	20.6	4.85	19.6	3/8 1st Stage	1192364
1039352	3/8	9-10	5.9	100	31.8	28.4	20.6	3.55	19.6	3/8 1st Stage	1192364
1039370	7/16	11	14.1	50	41.4	35.8	25.9	4.85	26.2	1/2 1st Stage	1192408
1039398	1/2	13	12.2	50	41.4	36.6	25.9	4.05	26.2	1/2 1st Stage	1192408
1039414	9/16	14	28.6	25	57.0	43.7	31.2	5.85	32.8	5/8 1st Stage	1192444
1039432	5/8	16	24.5	25	57.0	46.7	32.5	5.10	32.8	5/8 1st Stage	1192444
1039450	3/4	18-20	41.3	10	67.0	55.0	38.6	5.85	39.4	3/4 1st Stage	1192462
1039478	7/8	22	57	10	73.0	63.5	44.5	6.85	45.7	7/8 1st Stage	1192480
1039496	1	25-26	85	10	77.5	72.0	51.0	8.40	52.0	1 1st Stage	1192505
1039539	1-1/4	30-32	174	Bulk	103	89.0	63.5	9.65	65.0	1-3/8 Socket	1193023

Note: Fittings designed only to be used on exact sizes listed.