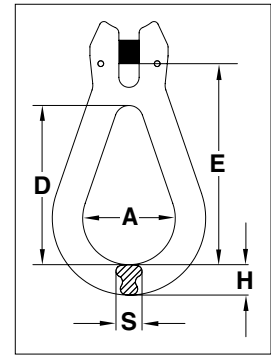


A-1370



- Forged alloy steel — Quenched & Tempered.
- Individually proof tested to 2.5 times the Working Load Limit.
- Proof test certification shipped with each link.
- Each link has a Product Identification Code (PIC) for material traceability, along with the size and the name Crosby in raised letters.
- Suitable for use with Grade 100 and Grade 80 chain.



A-1370 Reeving Link

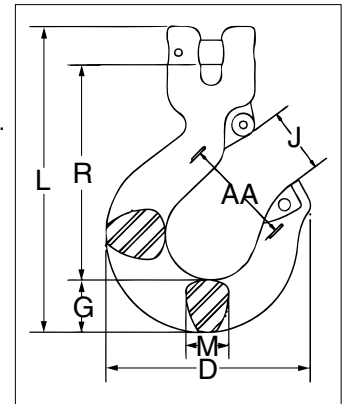
| Chain Size | | Working Load Limit (t) | Stock No. | Weight Each (kg) | Dimensions (mm) | | | | |
|------------|------|------------------------|-----------|------------------|-----------------|------|------|------|------|
| (in) | (mm) | | | | A | D | E | H | S |
| 1/4-5/16 | 7-8 | 2.5 | 1012000 | 0.26 | 39.0 | 67.5 | 90.0 | 16.0 | 10.0 |
| 3/8 | 10 | 4.0 | 1012009 | 0.50 | 49.0 | 85.5 | 108 | 17.0 | 14.0 |
| 1/2 | 13 | 6.8 | 1012018 | 1.10 | 62.5 | 108 | 138 | 21.0 | 18.0 |
| 5/8 | 16 | 10.3 | 1012027 | 2.55 | 79.0 | 139 | 180 | 30.5 | 25.5 |

4:1 Design Factor.

L-1339



- Forged alloy steel — Quenched & Tempered.
- Individually Proof Tested to 2-1/2 times the Working Load Limit with certification.
- Each hook has a Product Identification Code (PIC) for material traceability, along with the size and the name Crosby.
- Hoist hooks incorporate QUIC-CHECK® deformation and angle indicators.
- Low profile hook tip.
- New integrated latch (S-4320/S-4339) meets the world standard for lifting.
 - Heavy duty stamped latch interlocks with the hook tip.
 - High cycle, long life spring.
 - When secured with the proper cotter pin through the hole in the tip of hook, meets the intent of OSHA Rule 1926.1431(g) and 1926.1501(g) for personnel lifting.
- Suitable for use with Grade 100 and Grade 80 chain.
- Fatigue rated at 1-1/2 times the Working Load Limit at 20,000 cycles.



L-1339 Clevis Sling Hook

| Chain Size | | Working Load Limit (t) | Hook ID Code | Stock No. | Weight Each (kg) | Dimensions (mm) | | | | | | | S-4320 Repl. Latch Stock No. | S-4339 Repl. Latch Stock No. |
|------------|--------|------------------------|--------------|-----------|------------------|-----------------|------|------|-----|------|------|------|------------------------------|------------------------------|
| (in) | (mm) | | | | | D | G | J | L | M | R | AA | | |
| - | 6 | 1.5 | DA | 1049103 | 0.29 | 72.6 | 18.5 | 23.6 | 107 | 16.0 | 74.9 | 38.1 | 1096325 | - |
| 1/4 | 7 | 2.0 | HA | 1049112 | 0.72 | 98.0 | 26.4 | 30.2 | 144 | 19.1 | 101 | 50.8 | 1096468 | - |
| 5/16 | 8 | 2.6 | HA | 1049121 | 0.71 | 98.0 | 26.4 | 30.2 | 144 | 19.1 | 100 | 50.8 | 1096468 | - |
| 3/8 | 10 | 4.0 | IA | 1049130 | 1.17 | 111 | 30.2 | 38.9 | 171 | 25.4 | 120 | 63.5 | 1096515 | - |
| 1/2 | 13 | 6.8 | JA | 1049149 | 2.39 | 142 | 36.6 | 45.2 | 213 | 29.7 | 150 | 76.2 | 1096562 | - |
| 5/8 | 16 | 10.3 | KA | 1049158 | 4.45 | 172 | 48.0 | 61.2 | 259 | 36.6 | 177 | 102 | 1096609 | - |
| 3/4 | 18-20 | 16.0 | KHX19 | 1049167 | 8.30 | 211 | 71.9 | 68.3 | 332 | 50.0 | 203 | 114 | - | 1048714 |
| 7/8* | 22-23* | 21.0 | KHX23 | 1049176 | 11.2 | 233 | 78.0 | 77.5 | 355 | 50.0 | 223 | 127 | - | 1048732 |

4:1 Design Factor.

*7/8 in (22-23 mm) size does not have cam, latch attaches to unique pin.