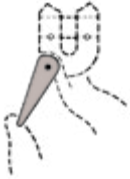


Sling Hook KHN L

This hook is most widely used in general purpose slinging.

Stock No.	Reference	WLL (t)		Dimensions (mm)					Weight (kg)	
		8	8+10	R	D	S	T		No Latch	With Latch
							No Latch	With Latch		
Z2780887	*KH23	16	21	222	79	51	76	60	11.39	13.14
Z2780896	*KH26	21.2	27	251	89	60	85	72	16.06	18.94
Z2780903	KHN32L	31.5	40	334	118	85	113	106	32.66	34.61



Safety Latch KHL N

A robust latch to prevent accidental detachment of the load.

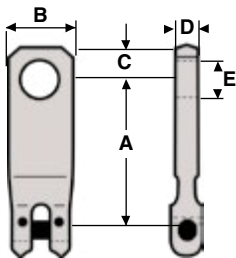
Stock No.	Reference	Part Number	Hook Reference
2780967	KHL32N	2781939	KHN32



Hook Latch Assembly KHL

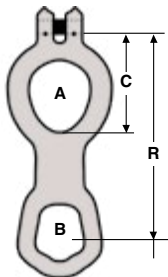
This assembly is for use with KH23 and KH26 and comprises a load pin to which the latch is attached.

Stock No.	Reference	Part Number	Hook Reference
2780976	KHL23	2780887	KH23
2780985	KHL26	2780896	KH26



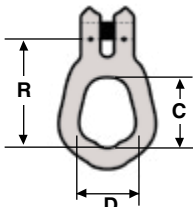
Top Suspension Plates

Stock No.	Type Size/ Reference	WLL (t)		Dimensions (mm)					Weight (kg)
		8	8+10	A	B	C	D	E	
Z2781555	C151401	5.3	6.7	153	62	32	20	36	1.59
Z2781564	C151402	5.3	6.7	140	62	32	20	36	1.52



Keep Plate C2247

Stock No.	Type Size/ Reference	WLL (t)		Dimensions (mm)				Weight (kg)
		8	8+10	A	B	C	R	
Z2781617	C2247	5.3	6.7	95 x 76	74 x 58	133	301	3.48



Single Trunnion Plate C1513

Stock No.	Type Size/ Reference	WLL (t)		Dimensions (mm)			Weight (kg)
		8	8+10	R	C	D	
Z2781626	C1513	5.3	6.7	112	74	58	1.5