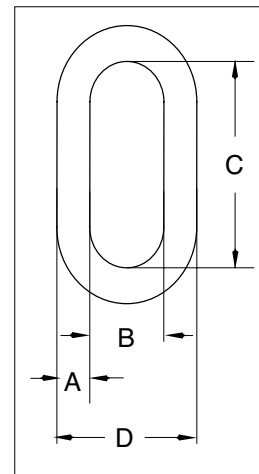


## G-340 / S-340



- Forged carbon steel - Quenched & Tempered
- Self colored (S) or hot-dip galvanized (G).



### G-340/S-340 Weldless End Links

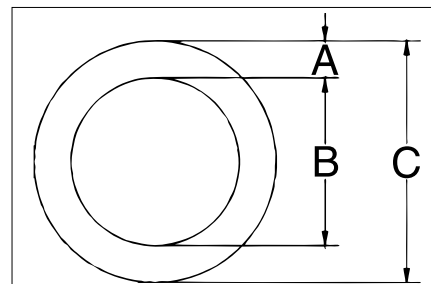
Size (A) (mm)	Stock No.		Working Load Limit (t)	Weight Each (kg)	Dimensions (mm)			
	G-340 Galv.	S-340 S.C.			A	B	C	D
8	1014057	1014066	1.13	.07	8	12.7	44.5	30.0
10	1014075	1014084	1.72	.10	10	14.2	47.8	35.1
13	1014093	1014100	2.95	.22	13	19.1	60.5	46.0
16	1014119	1014128	4.22	.44	16	25.4	82.5	59.0
19	1014137	1014146	6.35	.68	19	28.7	89.0	68.0
22	1014155	1014164	5.44	1.17	22	51.0	130	95.5
25	1014173	1014182	6.89	1.79	25	57.0	146	108
32	1014191	1014208	11.97	3.31	32	63.5	178	127
35	1014217	1014226	13.61	4.71	35	70.0	197	140

5:1 Design Factor. Based on single leg sling (in-line load), or resultant load on multiple legs with an included angle less than or equal to 120°.

## S-643



- Forged carbon steel - Quenched & Tempered.



### S-643 Weldless Rings

Size (mm)	Stock No	Working Load Limit Single Pull (t)	Weight Each (kg)	Dimensions (mm)		
				A	B	C
22.2 x 102	1013780	3.27	1.23	22.2	102	146
22.2 x 140	1013806	2.54	1.57	22.2	140	184
25.4 x 102	1013824	4.90	1.67	25.4	102	152
28.6 x 152	1013842	4.72	2.99	28.6	152	210
31.8 x 127	1013860	7.71	3.09	31.8	127	191
34.9 x 152	1013888	8.62	4.59	34.9	152	222

6:1 Design Factor.