

## PLAIN TROLLEYS



Accolift® Plain Trolleys are light and easy to adapt to a wide range of beams. The trolley wheels include lifetime lubricated ball bearings for maintenance free operation. A perfect match to make the Accolift electric or hand chain hoist and its load horizontally mobile.

**Construction Features:**

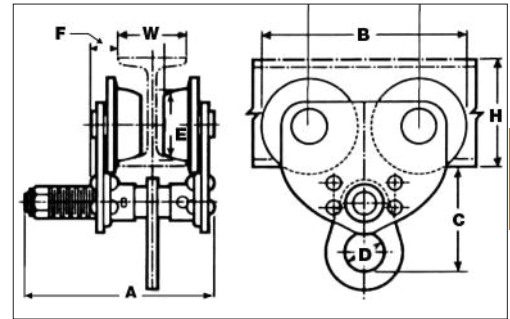
**Side Frame:** Side plates are rugged rolled steel

**Wheels:** Crown tread allows operation on tapered or flat flange beams

**Bearings:** Shielded, lifetime lubricated, single row ball bearings.

**Suspension Lug:** Pivot mounted suspension shaft designed to equally distribute the load to all wheels.

**Options:** Optional equipment available for this product includes bronze wheels and nickel plated body. Please contact the factory for more information.



3

Model Number	Capacity (Ton)	W Beam Width Min. - Max. (in)	Dimensions (in)								Min. Beam Size H	Min. Beam Radius	Net Weight (lb)
			A	B	C	D	E	F	G				
1650010	1/2	3" to 5"	8.1	6.9	5.1	1.8	2.2	1.1	3.5	4	24	14	
1650020	1	3" to 5"	8.1	9.1	5.1	1.8	3.2	1.1	4.8	5	30	22	
1650030	2	3" to 6"	9.3	10.6	6.1	2.4	3.9	1.4	5.6	6	36	41	
1650040	3	3" to 6"	9.9	12.3	7.5	2.6	4.5	1.9	6.4	7	36	63	
1650050	5	5" to 7"	11.1	13.9	9.1	3.0	4.9	2.1	7.2	10	48	97	

## GEARED TROLLEYS



Accolift® Geared Trolleys are light and easy to adapt to a wide range of beams. The trolley wheels include lifetime lubricated ball bearings for maintenance free operation. A perfect match to make the Accolift electric or hand chain hoist and its load horizontally mobile for short distances and accurate load positioning.

**Construction Features:**

**Side Frame:** Side plates are rugged rolled steel

**Wheels:** Crown tread allows operation on tapered or flat flange beams

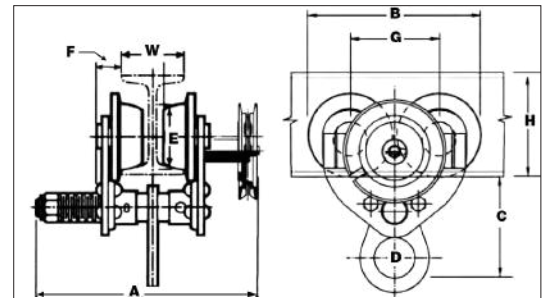
**Bearings:** Shielded, lifetime lubricated, single row ball bearings.

**Hand Chain:** Electric welded, close link galvanized coil chain, accurately and uniformly sized to seat properly in handwheel pockets.

**Chain Guide:** Steel chain guide.

**Suspension Lug:** Pivot mounted suspension shaft designed to equally distribute the load to all wheels.

**Options:** Optional equipment available for this product includes bronze wheels, stainless steel hand chain and nickel plated body. Please contact the factory for more information.



Model Number	Capacity (Ton)	W Beam Width Min. - Max. (in)	Hand Chain Drop (ft)	Dimensions (in)								Min. Beam Size H	Min. Beam Radius	Net Weight (lb)
				A	B	C	D	E	F	G				
1650110	1/2	3" to 5"	18	10.8	9.1	5.1	1.8	3.2	1.1	4.8	5	30	35	
1650120	1	3" to 5"	18	10.8	9.1	5.1	1.8	3.2	1.1	4.8	5	30	35	
1650130	2	3" to 6"	18	12.0	10.6	6.1	2.4	3.9	1.4	5.6	6	36	57	
1650140	3	3" to 6"	18	13.0	12.3	7.5	2.6	4.5	1.9	6.4	7	36	79	
1650150	5	5" to 7"	18	15.0	13.9	9.1	3.0	4.9	2.1	7.2	10	48	114	
1650160	10	5" to 7.5"	18	17.0	13.9	11.0	3.2	4.9	2.1	7.2	10	48	227	