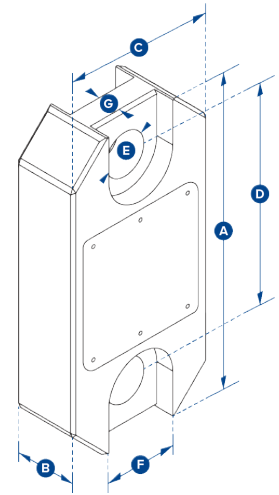


Wirelink Plus



- Available in capacities ranging from 1 to 300 metric tons.
- The non-indicating version of Crosby SP's popular Radiolink Plus and Loadlink Plus digital dynamometer tension loadcells.
- Multiple output options to include mV/V, analog out, ASCII, MODBUS RTU, and CAN-BUS.
- Constructed of lightweight, aerospace grade aluminum.
- Available with IP68 environmental protection.
- supplied with a 10-meter cable as standard, however, usable cable length varies greatly with lengths available to 1,500 meters depending on output format.
- Options for subsea use available.
- 2-year warranty.
- DNV-GL Type Approval.
- Complies with ASME B30.26.



Part Numbers SP	WLP1T	WLP2T5	WLP6T5	WLP12T	WLP25T	WLP35T	WLP55T	WLP75T	WLP100T	WLP150T	WLP200T	WLP250T	WLP300T
Crosby	2789154	2789158	2789273	2789152	2789157	2789160	2789269	2789161	2789151	2789153	2789155	2789156	2789159
Capacity	(te) 1000 kg	2.5	6.5	12	25	35	55	75	100	150	200	250	300
	(lb) 2,200	5,500	14,300	26,000	55,000	77,000	120,000	165,000	220,000	330,000	440,000	550,000	660,000
Resolution	(te) 0.5 kg	0.001	0.001	0.002	0.005	0.005	0.01	0.01	0.05	0.05	0.1	0.1	0.1
	(lb) 1	2	2	5	10	10	20	20	100	100	200	200	200
Units	(metric) kg	metric tons											
	(imperial) pounds	pounds											
Weight	(kg) 1.5	1.5	2.4	3.7	5	8.6	13	16	34	46	82	82	118
	(lb) 3.3	3.3	5.3	8.2	11	19	28.7	35.3	75	101.4	180.8	180.8	260
Design Factor	12:1	7:1	7:1	7:1	5:1	5:1	5:1	5:1	5:1	4:1	5:1	4:1	5:1
Operating Temp.	-10°C to +50°C / 14°F to 122°F												
Accuracy	±0.1% of full scale												
Protection	IP67 / NEMA6												
Dimension A	(mm) 204	204	249	305	340	393	424	470	608	670	700	700	806
	(in) 8.03	8.03	9.80	12.01	13.39	15.47	16.69	18.50	23.94	26.38	27.56	27.56	31.73
Dimension B	(mm) 43	43	43	47	60	75	75	75	99	99	144	144	150
	(in) 1.69	1.69	1.69	1.85	2.36	2.95	2.95	2.95	3.90	3.90	5.67	5.67	5.91
Dimension C	(mm) 104	104	113	113	115	126	180	202	255	303	350	350	426
	(in) 4.09	4.09	4.45	4.45	4.53	4.96	7.09	7.95	10.04	11.93	13.78	13.78	16.77
Dimension D	(mm) 146	146	165	193	215	225	230	260	320	360	350	350	350
	(in) 5.75	5.75	6.50	7.60	8.46	8.86	9.06	10.24	12.60	14.17	13.78	13.78	13.78
Dimension ØE	(mm) 24.5	24.5	38	47.5	55	60	76	76	109	109	145	145	160
	(in) 0.96	0.96	1.50	1.87	2.17	2.36	2.99	2.99	4.29	4.29	5.71	5.71	6.30
Dimension F	(mm) 48	48	65	Not relevant in this capacity									
	(in) 1.89	1.89	2.60										
Dimension G	(mm) 19	19	32	Not relevant in this capacity									
	(in) 0.75	0.75	1.26										
Crosby Shackle	G2130						G2140						
Loading Pin Ø (mm)	19	19	25	35	51	57	57	70	83	95	121	127	152
	(in) 3/4	3/4	1	1 3/8	2	2 1/4	2 1/4	2 3/4	3 1/4	3 3/4	4 3/4	5	6

Part Number	Description
ICA1	3 wire 0-10v analogue output
ICA2	3 wire 0-5v analogue output
ICA3	4 wire +/- 10v analogue output
ICA4	3 wire 4-20mA analogue output
ICA5	2 wire 4-20mA analogue output