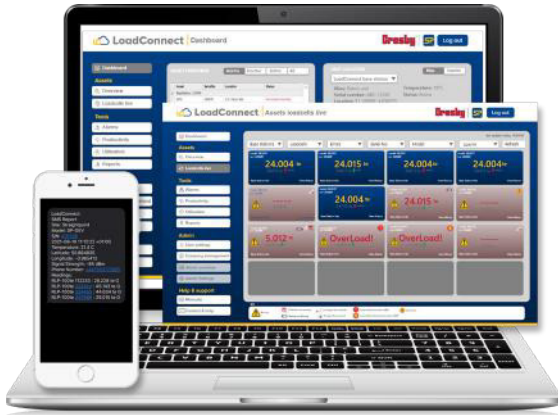


# LoadConnect Software



Crosby Straightpoint LoadConnect, connected to BaseStation, is a cloud-based solution to monitor loads and line tensions from any distance and from anywhere in the world. Stay connected, protect assets, reduce site visits, and improve safety.

- Dashboard overview.
- Live load data.
- Error reporting.
- Productivity and utilization graphs.
- Regular email reporting.
- SMS alerts.
- Connect to BOLT to monitor tension on cables.
- Connect to SP loadcells to monitor loads.

## BaseStation

How it works:



Part Numbers SP	BaseStation
Crosby	2789574
Required Power Supply	9 to 28 V DC
Radio Frequency	2.4 GHz (License Free)
Maximum Number of Loadcells	16
Range	Up to 500 meters / 1,640 feet
Operating Temperature Range	-10°C to 50°C / 14°F to 122°F
Backup Battery Life	16 hours
Input Option	1x 4-20mA (2 wire) OR 1x mV/V & Wireless
Weight	2.75 kg / 6.06 lb
Network Supported	4G / 3G
Frequency Band	LTE-TDD B34/B38/B39/B40/B41 LTE-FDD B1/B2/B3/B4/B5/B7/B8/B12/B13/ B18/B19/B20/B25/B26/B28/B66 UMTS/HSPA+ B1/B2/B4/B5/B6/B8/B19
SIM Type	Micro SIM (NOT INCLUDED)
Alert Functionality	via SMS (up to 3 pre defined numbers) Optional subscription to online dashboard
IP Rating	IP67 / NEMA6
Dimension	560 x 260 x 90 mm - Antennas included

Data option to be enabled on the SIM card used for full functionality.  
User configuration required via free software supplied.