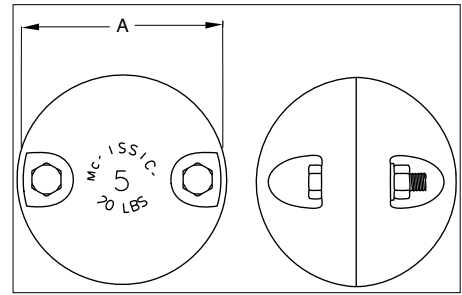




**Split Overhaul Ball**

- Attaches easily to Wireline.



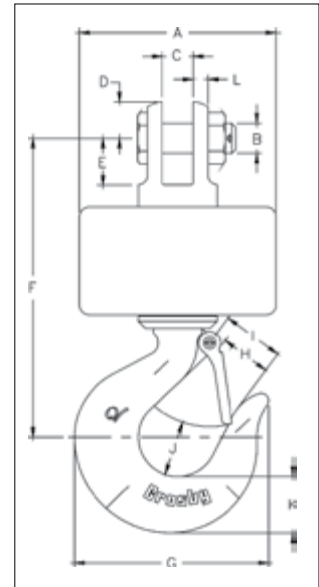
**Split Overhaul Ball**

Catalog No.	Stock No.	Wire Rope Diameter (in)	Weight Each (lb)	Ball Diameter A (in)
SHB - 15	2003822	1/4-5/16	15	5.06
SHB - 20	2003830	3/8	20	5.38
SHB - 50	2003831	1/2 - 5/8	50	7.12
SHB - 100	2003832	5/8 - 3/4 - 7/8	100	9.19



**AS-15**

- Utilizes genuine Crosby hooks which are forged alloy steel, Quenched & Tempered, and contain the patented QUIC-CHECK® marking.
- Entire overhaul ball is zinc plated to resist corrosion.
- Designed with angular contact bearings which maximizes efficiency, reliability, and service life of swivel and extend the life of the wireline.
- Available with wide jaw opening that utilizes nylon spools and shields.
- Designed for applications where headroom is critical.
- Other upper fittings available upon request.



**Angular Contact Bearing Swivel Overhaul Balls**

Stock No.	Working Load Limit (short Tons)	Wire Rope Diameter (in)	Dimensions (in)												Weight Each (lb)
			A	B	C	D	E	F	G	H	I	J	K	L	
2009806	1.5	.38	4.00	.50	.50	.69	.78	6.28	4.09	1.12	1.22	1.19	1.12	.31	9
2009807	3.0	.50	5.00	.75	.75	.94	1.19	8.56	4.94	1.34	1.50	1.38	1.44	.38	19
2003969	5.0	.62	6.88	.88	1.06	1.12	1.56	10.81	6.50	1.69	1.88	1.75	1.81	.56	43
2009808	8.5	.75	7.00	1.19	1.56	1.34	2.09	13.75	8.69	2.25	2.50	2.56	2.59	.53	60

5:1 Design Factor.