

# 680 Series Construction Blocks



680 Construction Block with shackle



680 Construction Block with hanger



680 Construction Block bolt only

APPLICATION AND WARNING INFORMATION  
SECTION 17

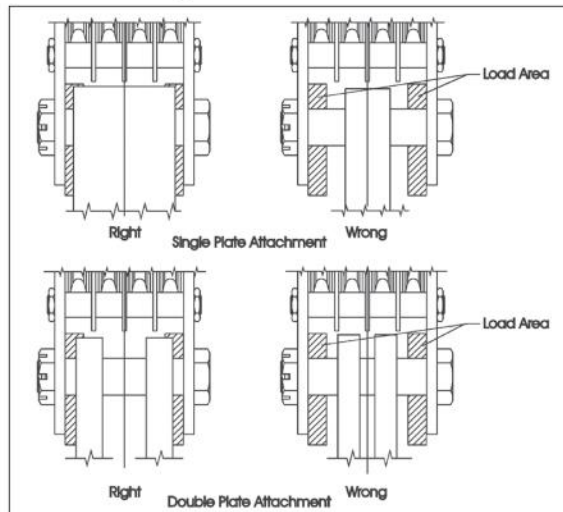
- Wide range of products available:
  - 5 to 100 short Tons capacity
  - 6" to 24" sheave diameter
  - 3/8" to 1-1/4" wire rope diameter
  - Larger capacity blocks available
- Equipped with genuine Crosby® forged steel Quenched & Tempered shackles that contain the patented QUIC-CHECK® markings.
- Design Factor of 4:1.
- All 680 Series Blocks are furnished standard with bronze bushings.
- All 680 Series Blocks 16" and larger, are furnished with McKissick® roll-forged sheaves with flame-hardened grooves.
- Sheaves are lubricated through center pin with a separate lube channel to each bearing.

- Single sheave blocks have thimble dead end.
- Manufactured by an ISO 9001 and API Q1 Certified facility.
- Marked in short tons unless metric tag requested at time of order.
- Meets or exceeds all requirements of ASME B30.26. Importantly, these blocks meet other critical performance requirements including fatigue life, impact properties and material traceability, not addressed by ASME B30.26.

### OPTIONS AVAILABLE

- Roller bearing sheaves
- Hanger and Bolt Only models available
- Third party testing with certification
- Galvanized finish – Most models

### Block Loading Area



NOTE: The outside of attaching plates must be within the indicated load areas. Means must be provided to keep attaching plates equally spaced from the block side plates. For dimension information, including the load area, visit [thecrosbygroup.com/tables](http://thecrosbygroup.com/tables).