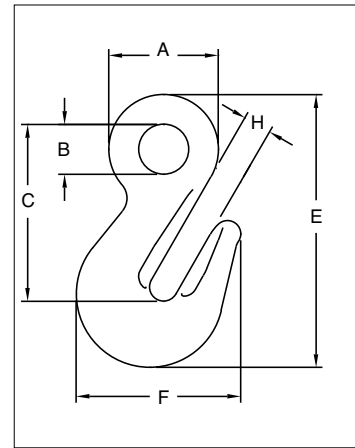


## A-1328



- Forged alloy steel — Quenched & Tempered.
- Individually Proof Tested to 2-1/2 times the Working Load Limit with certification.
- Each hook has a Product Identification Code (PIC) for material traceability, along with the size and the name Crosby.
- Suitable for use with Grade 100 and Grade 80 chain.
- Fatigue rated at 1-1/2 times the Working Load Limit at 20,000 cycles.



### A-1328 Eye Grab Hook

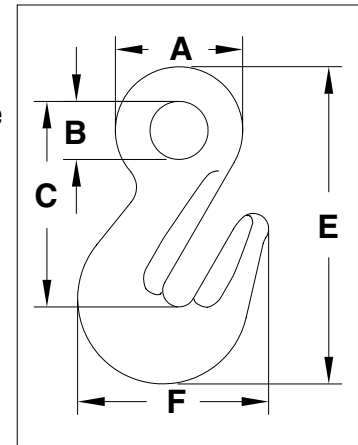
Chain Size		Working Load Limit (lb)	Stock No.	Weight Each (lb)	Dimensions (in)					
(in)	(mm)				A	B	C	E	F	H
1/4 - 5/16	7 - 8	5700	1026169	.98	1.75	.75	2.79	4.29	2.57	.44
3/8	10	8800	1026187	1.6	2.06	.94	3.33	5.13	3.09	.53
1/2	13	15000	1026196	3.3	2.56	1.12	4.11	6.38	3.83	.66
5/8	16	22600	1026205	6.0	3.07	1.31	4.91	7.62	4.53	.79
3/4	19-20	35300	1026214	10.0	3.25	1.50	5.41	8.76	6.00	.94
7/8	22-23	44100	1026223	13.1	3.94	1.81	6.48	10.10	6.53	1.09
1	26	59700	1026232	18.9	4.44	2.00	7.22	11.45	7.75	1.19
1 1/4	32	90400	1026241	39.4	5.64	2.38	9.08	14.59	9.50	1.50

4:1 Design Factor.

## A-1348



- Forged alloy steel — Quenched & Tempered.
- The use of A-1348 Cradle Grab Hook will allow 100% percent of the chain sling capacity. When used to hook back to chain leg to form a choker, the angle of the choke must be 120 degrees or greater. When used as a chain shortener, minimize twist of chain and ensure chain is fully engaged in hook.
- Innovative cradle design allows for 100% efficiency of Grade 100 chain.
- Individually Proof Tested to 2-1/2 times the Working Load Limit with certification.
- Each hook has a Product Identification Code (PIC) for material traceability, along with the size and the name Crosby in raised letters.
- Suitable for use with Grade 100 and Grade 80 chain.
- Fatigue rated to 20,000 cycles at 1-1/2 times the Working Load Limit.



### A-1348 Eye Cradle Grab Hook

Chain Size		Working Load Limit (lb)	Stock No.	Weight Each (lb)	Dimensions (in)				
(in)	(mm)				A	B	C	E	F
1/4-5/16	7-8	5700	1026200	0.77	1.43	0.65	2.52	3.87	2.29
3/8	10	8800	1026209	1.41	1.95	1.02	3.07	4.72	2.71
1/2	13	15000	1026218	1.92	2.44	1.14	3.82	5.75	3.24
5/8	16	22600	1026227	6.24	3.11	1.42	4.98	7.72	4.40

4:1 Design Factor.