

## Crosby® Forged Swivels

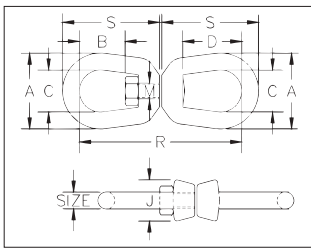
- 402 and 403 forged swivels are positioning devices and are not intended to rotate under load.
- Hot-dip galvanized.
- Quenched & Tempered.
- Crosby products meet or exceed all requirements of ASME B30.26 including identification, ductility, design factor, proof load and temperature requirements. Importantly, Crosby products meet other critical performance requirements, including fatigue life, impact properties and material traceability, not addressed by ASME B30.26.
- G-402 swivels meet the performance requirements of Federal Specification RR-C-271G, Type VII, Class 2, except for those provisions required of the contractor.
- G-403 swivels meet the performance requirements of Federal Specification RR-C-271G, Type VII, Class 3, except for those provisions required of the contractor.



1/4" - 1 1/4" size



1 1/2" size



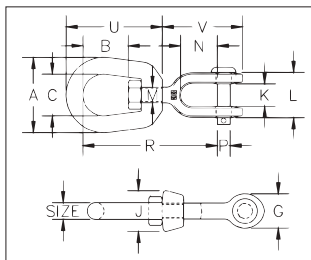
### G-402 Regular Swivels

| Size (in) | Stock No. | Working Load Limit (lb)* | Weight Each (lb) | Dimensions (in) |      |      |      |      |      |       |      |
|-----------|-----------|--------------------------|------------------|-----------------|------|------|------|------|------|-------|------|
|           |           |                          |                  | A               | B    | C    | D    | J    | M    | R     | S    |
| 1/4       | 1016019   | 850                      | .21              | 1.25            | .69  | .75  | 1.06 | .69  | .31  | 2.94  | 1.69 |
| 5/16      | 1016037   | 1250                     | .39              | 1.63            | .81  | 1.00 | 1.25 | .81  | .38  | 3.56  | 2.06 |
| 3/8       | 1016055   | 2250                     | .71              | 2.00            | .94  | 1.25 | 1.50 | 1.00 | .50  | 4.31  | 2.50 |
| 1/2       | 1016073   | 3600                     | 1.32             | 2.50            | 1.31 | 1.50 | 2.00 | 1.31 | .63  | 5.44  | 3.19 |
| 5/8       | 1016091   | 5200                     | 2.49             | 3.00            | 1.56 | 1.75 | 2.38 | 1.50 | .75  | 6.56  | 3.88 |
| 3/4       | 1016117   | 7200                     | 4.02             | 3.50            | 1.75 | 2.00 | 2.63 | 1.88 | .88  | 7.19  | 4.31 |
| 7/8       | 1016135   | 10000                    | 6.25             | 4.00            | 2.06 | 2.25 | 3.06 | 2.13 | 1.00 | 8.38  | 5.00 |
| 1         | 1016153   | 12500                    | 8.95             | 4.50            | 2.31 | 2.50 | 3.50 | 2.38 | 1.13 | 9.63  | 5.75 |
| 1-1/4     | 1016199   | 18000                    | 16.37            | 5.63            | 2.69 | 3.13 | 3.69 | 3.00 | 1.50 | 11.44 | 6.75 |
| 1-1/2+    | 1016215   | 45200                    | 45.79            | 7.09            | 3.88 | 4.09 | 3.88 | 3.75 | 2.25 | 16.69 | 9.91 |

5:1 Design Factor.



### G-403 Jaw End Swivels



| Size (in) | Stock No. | Working Load Limit (lb)* | Weight Each (lb) | Dimensions (in) |      |      |      |      |      |      |      |      |      |       |       |       |
|-----------|-----------|--------------------------|------------------|-----------------|------|------|------|------|------|------|------|------|------|-------|-------|-------|
|           |           |                          |                  | A               | B    | C    | G    | J    | K    | L    | M    | N    | P    | R     | U     | V     |
| 1/4       | 1016395   | 850                      | .21              | 1.25            | .69  | .75  | .69  | .69  | .47  | 1.03 | .31  | .88  | .25  | 2.63  | 1.69  | 1.69  |
| 5/16      | 1016411   | 1250                     | .34              | 1.63            | .81  | 1.00 | .81  | .81  | .50  | 1.13 | .38  | .88  | .31  | 2.94  | 2.06  | 1.81  |
| 3/8       | 1016439   | 2250                     | .66              | 2.00            | .94  | 1.25 | 1.00 | 1.00 | .63  | 1.41 | .50  | 1.06 | .38  | 3.63  | 2.50  | 2.25  |
| 1/2       | 1016457   | 3600                     | 1.34             | 2.50            | 1.31 | 1.50 | 1.31 | 1.31 | .75  | 1.75 | .63  | 1.31 | .50  | 4.50  | 3.19  | 2.88  |
| 5/8       | 1016475   | 5200                     | 2.48             | 3.00            | 1.56 | 1.75 | 1.63 | 1.50 | .94  | 2.06 | .75  | 1.50 | .63  | 5.31  | 3.88  | 3.44  |
| 3/4       | 1016493   | 7200                     | 3.88             | 3.50            | 1.75 | 2.00 | 1.88 | 1.88 | 1.13 | 2.53 | .88  | 1.75 | .75  | 6.06  | 4.31  | 4.00  |
| 7/8       | 1016518   | 10000                    | 5.87             | 4.00            | 2.06 | 2.25 | 2.13 | 2.13 | 1.34 | 2.79 | 1.00 | 2.06 | .88  | 7.00  | 5.00  | 4.53  |
| 1         | 1016536   | 12500                    | 9.84             | 4.50            | 2.31 | 2.50 | 2.63 | 2.38 | 1.75 | 3.72 | 1.13 | 2.81 | 1.13 | 8.56  | 5.75  | 5.94  |
| 1-1/4     | 1016572   | 18000                    | 15.75            | 5.69            | 2.69 | 3.13 | 3.13 | 3.00 | 2.06 | 4.31 | 1.63 | 2.81 | 1.38 | 9.75  | 7.06  | 6.38  |
| 1-1/2     | 1016590   | 45200                    | 54.75            | 7.00            | 3.88 | 4.00 | 5.63 | 4.00 | 2.88 | 6.00 | 2.25 | 4.44 | 2.25 | 14.25 | 10.00 | 10.84 |

5:1 Design Factor.