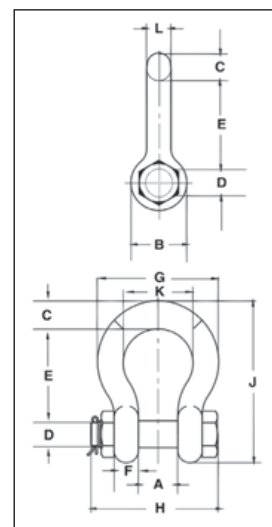




G-2140 / S-2140

G-2140 meets the performance requirements of Federal Specification RR-C-271F, Type IVA, Grade B, Class 3, except for those provisions required of the contractor. For additional information, see page 475.

- Quenched and Tempered.
- Alloy bows, Alloy bolts.
- Forged Alloy Steel 2 thru 200 metric tons. Cast Alloy Steel 250 thru 400 metric tons. Meets performance requirements of Grade 8 shackles.
- Working Load Limit is permanently shown on every shackle.
- 30, 40, 55, and 85 metric ton shackle bows are available galvanized or self colored with bolts that are galvanized and painted red.
- Sizes 3/8 inch and below are mechanically galvanized.
- 120, 150, 175 metric ton shackle bows are hot-dip galvanized; bolts are Dimetcoated and painted red.
- 400 metric ton shackle bows are Dimetcoated; bolts are Dimetcoated and painted red.
- Sizes 1-1/2 and larger are **RFID EQUIPPED**.
- Approved for use at -40° C (-40° F) to 204° C (400° F).
- Shackles are Quenched and Tempered and can meet DNV impact requirements of 42 Joules (31 ft•lbf) at -20° C (-4° F).
- All sizes are individually proof tested to 2.0 times the Working Load Limit.
- Refer to page 87 for Crosby COLD TUFF® shackles that meet the additional requirements of DNV rules for certification of lifting applications - Loose Gea .
- Shackles 200 metric tons and larger are provided as follows.
 - Serialized bolt and bow
 - Material certification (chemical)
 - Magnetic particle inspected.
 - Certification must be requested at time of orde .
- Meets or exceeds all requirements of ASME B30.26 including identification, ductilit , design factor, proof load and temperature requirements. 2140 shackles meet other critical performance requirements including impact properties and material traceability, not addressed by ASME B30.26.
- Type Approval certification in accordance with ABS 2016 Steel Vessel Rules and 2016 ABS Guide for Certification of Lifting Appliances available. Certificates available when requested at time of order and may include additional charges.
- Look for the Red Pin® . . . the mark of genuine Crosby quality.



SEE APPLICATION INFORMATION

On Page 92 of the General Catalog
Para Español: www.thecrosbygroup.com

G-2140 / S-2140 Crosby® Alloy Bolt Type Anchor Shackles

| Nominal Shackle Size (in) | Working Load Limit (t)* | Stock No. | | | Weight Each (kg) | Dimensions (mm) | | | | | | | | | | | Tolerance +/- | |
|---------------------------|-------------------------|-----------|---------|----------|------------------|-----------------|------|------|----------|-------|------|-------|-------|-------|------|------|---------------|------|
| | | G-2140 | S-2140 | G-2140OC | | A | B | C | D +/- .5 | E | F | G | H | J | K | L | A | E |
| 3/8 | 2 | 1021015 | - | - | 0.15 | 16.8 | 23.1 | 9.7 | 11.2 | 36.6 | 9.7 | 45.2 | 55.1 | 63.2 | 26.2 | 9.7 | 1.5 | 3.3 |
| 7/16 | 2 2/3 | 1021020 | - | - | 0.22 | 19.1 | 26.9 | 11.2 | 12.7 | 42.9 | 10.4 | 51.6 | 63.8 | 73.9 | 29.5 | 11.2 | 1.5 | 3.3 |
| 1/2 | 3 1/3 | 1021029 | - | - | 0.36 | 20.6 | 30.2 | 12.7 | 16.3 | 47.8 | 11.7 | 58.7 | 71.1 | 83.3 | 33.3 | 12.7 | 1.5 | 3.3 |
| 5/8 | 5 | 1021038 | - | - | 0.76 | 26.9 | 38.1 | 17.5 | 19.6 | 60.5 | 14.7 | 74.7 | 90.4 | 106.4 | 42.9 | 16.0 | 1.5 | 3.3 |
| 3/4 | 7 | 1021047 | - | - | 1.23 | 31.8 | 46.0 | 20.6 | 22.6 | 71.4 | 17.5 | 88.9 | 105.4 | 126.2 | 50.8 | 19.1 | 1.5 | 6.4 |
| 7/8 | 9 1/2 | 1021056 | - | - | 1.79 | 36.6 | 53.1 | 24.6 | 25.9 | 84.1 | 20.6 | 102.4 | 122.4 | 148.1 | 57.9 | 22.4 | 1.5 | 6.4 |
| 1 | 12 1/2 | 1021065 | - | - | 2.57 | 42.9 | 60.5 | 26.9 | 29.2 | 95.3 | 23.4 | 119.1 | 136.9 | 166.6 | 68.3 | 25.4 | 1.5 | 6.4 |
| 1 1/8 | 15 | 1021074 | - | - | 3.75 | 46.0 | 68.3 | 31.8 | 31.8 | 108.0 | 26.4 | 131.1 | 149.9 | 189.7 | 73.9 | 28.7 | 1.5 | 6.4 |
| 1 1/4 | 18 | 1021083 | - | - | 5.31 | 51.6 | 76.2 | 35.1 | 35.6 | 119.1 | 29.5 | 146.1 | 169.9 | 209.6 | 82.6 | 32.8 | 1.5 | 6.4 |
| 1 3/8 | 21 | 1021092 | - | - | 7.18 | 57.2 | 84.1 | 38.1 | 38.9 | 133.4 | 32.5 | 162.1 | 183.1 | 232.7 | 92.2 | 36.1 | 3.3 | 6.4 |
| 1-1/2 | 30 | 1021110 | 1021129 | 1262407 | 8.52 | 60.5 | 91.9 | 41.1 | 41.4 | 146 | 35.3 | 175 | 196 | 254 | 98.6 | 38.9 | 3.3 | 6.4 |
| 1-3/4 | 40 | 1021138 | 1021147 | 1262416 | 15.4 | 73.2 | 106 | 57.2 | 50.8 | 178 | 44.5 | 224 | 237 | 313 | 127 | 46.7 | 3.3 | 6.4 |
| 2 | 55 | 1021156 | 1021165 | 1262425 | 23.6 | 82.6 | 122 | 61.0 | 57.2 | 197 | 50.8 | 258 | 264 | 347 | 146 | 52.8 | 3.3 | 6.4 |
| 2-1/2 | 85 | 1021174 | 1021183 | 1262434 | 43.5 | 105 | 148 | 79.2 | 69.9 | 267 | 66.5 | 324 | 345 | 455 | 184 | 68.8 | 6.4 | 6.4 |
| 3 | 120 | 1021192 | - | 1262443 | 81 | 127 | 165 | 92.2 | 82.6 | 330 | 76.2 | 371 | 384 | 546 | 200 | 79.2 | 6.4 | 6.4 |
| 3-1/2 | † 150 | 1021218 | - | 1262452 | 120 | 133 | 203 | 111 | 95.3 | 372 | 95.3 | 432 | 448 | 632 | 229 | 91.9 | 6.4 | 6.4 |
| 4 | † 175 | 1021236 | - | 1262461 | 153 | 140 | 229 | 116 | 108 | 368 | 102 | 457 | 517 | 652 | 254 | 102 | 6.4 | 6.4 |
| 4 3/4 | † 200 | 1021234 | - | - | 209 | 184 | 267 | 127 | 121 | 386 | 116 | 529 | 611 | 706 | 279 | 121 | 6.35 | 6.35 |
| 5 | † 250 | 1021243 | - | - | 276 | 216 | 305 | 143 | 127 | 470 | 123 | 600 | 632 | 828 | 330 | 127 | 4.0 | 1.80 |
| 6 | † 300 | 1021252 | - | - | 362 | 213 | 330 | 154 | 152 | 475 | 124 | 629 | 666 | 871 | 330 | 149 | 4.0 | 1.80 |
| 7** | † 400 | 1021478 | - | - | 500 | 210 | 356 | 184 | 178 | 572 | 165 | 660 | 728 | 1022 | 330 | 152 | 6.4 | 6.4 |

* Note: Maximum Proof Load is 2 times the Working Load Limit. Minimum Ultimate Load is 4.5 times the Working Load Limit on 2 thru 21 metric tons. For sizes 30 thru 175 metric tons, Minimum Ultimate Load is 5.4 times the Working Load Limit for 200 thru 400 metric tons, Minimum Ultimate Load is 4. times the Working Load Limit. ** Cast Alloy Steel.

† Furnished with Round Head Bolts with an handle for handling. For Working Load Limit reduction due to side loading applications, see page 94.