

**TAIL BOARD,  
SINGLE SHEAVE, 15-30t**



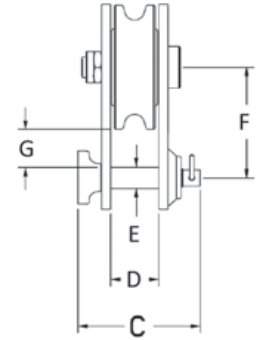
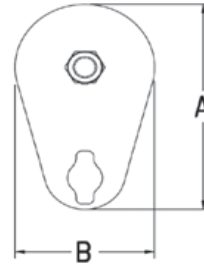
406



407



401



- Opening feature permits easy insertion of rope without reeving. Bolt for opening feature is retained, to ensure no lost bolts.
- Can be furnished with bronze bushings or roller bearings.
- Center pin equipped with pressure lube fitting.
- All sizes feature sheave grooves suited for a range of wire line diameters.
- Meets or exceeds all requirements of ASME B30.26 including identification ductility, design factor, proof load and temperature requirements. Importantly, these blocks meet other critical performance

- requirements including fatigue life and material traceability, not addressed by ASME B30.26.
- "All Alloy" snatch blocks feature a significant reduction in weight compared to snatch blocks made of non-alloy materials.
- Crosby's Engineered Solutions Group is ready to discuss your requirements and help select or develop the ideal block for your application. Call us at 1-800-777-1555.

Working Load Limit (t)*	Wire Rope Size (in)	Sheave Diameter (in)	Bearing Code	Weight Each (lb)	Catalog No.	Description	Stock No.	Dimensions (in)						
								A	B	C	D	E	F	G
15 tonnes														
15	3/4 - 7/8	8	BB	30	406	Champion	108311	13.19	8.12	5.13	2.35	1.25	6.75	2.13
15	3/4 - 7/8	8	RB	30	406	Champion	108312	13.19	8.12	5.13	2.35	1.25	6.75	2.13
15	3/4 - 7/8	10	BB	42	406	Champion	108406	14.94	10.12	5.13	2.35	1.25	7.50	1.94
15	3/4 - 7/8	10	RB	42	406	Champion	108407	14.94	10.12	5.13	2.35	1.25	7.50	1.94
20 tonnes														
20	1 - 1-1/8	8	BB	42	407	Super Champion	103523	13.56	8.12	6.00	2.55	1.50	7.12	2.37
20	1 - 1-1/8	8	RB	42	407	Super Champion	103541	13.56	8.12	6.00	2.55	1.50	7.12	2.37
20	1 - 1-1/8	10	BB	55	407	Super Champion	103603	15.63	10.12	6.00	2.55	1.50	8.19	2.44
20	1 - 1-1/8	10	RB	55	407	Super Champion	103621	15.63	10.12	6.00	2.55	1.50	8.19	2.44
20	1 - 1-1/8	12	BB	70	407	Super Champion	103685	17.75	12.25	6.00	2.55	1.50	9.25	2.56
20	1 - 1-1/8	12	RB	70	407	Super Champion	103701	17.75	12.25	6.00	2.55	1.50	9.25	2.56
20	1 - 1-1/8	14	BB	90	407	Super Champion	103765	20.10	14.00	6.00	2.55	1.50	10.72	2.97
20	1 - 1-1/8	14	RB	90	407	Super Champion	103783	20.10	14.00	6.00	2.55	1.50	10.72	2.97
25 tonnes														
25	1 - 1-1/4	8	BB	50	401	All Alloy High Capacity	178151	13.49	8.25	6.13	2.55	1.50	7.12	2.37
25	1 - 1-1/4	10	BB	65	401	All Alloy High Capacity	179167	15.43	10.25	6.13	2.55	1.50	8.19	2.44
25	1 - 1-1/4	18	BB	165	407	Super Champion	119652	24.62	18.25	7.12	3.05	1.75	13.00	3.13
25	1 - 1-1/4	18	RB	165	407	Super Champion	119653	24.62	18.25	7.12	3.05	1.75	13.00	3.13
30 tonnes														
30	1 - 1-1/4	12	BB	95	401	All Alloy High Capacity	179178	18.62	12.25	7.00	3.05	1.75	10.00	3.13
30	1 - 1-1/4	14	BB	110	401	All Alloy High Capacity	179187	20.88	14.25	7.00	3.05	1.75	11.25	3.38
30	1 - 1-1/4	20	BB	215	407	Super Champion	119669	28.88	20.25	8.31	3.55	2.25	15.25	4.13
30	1 - 1-1/4	20	RB	215	407	Super Champion	119678	28.88	20.25	8.31	3.55	2.25	15.25	4.13
30	1 - 1-1/4	24	BB	290	407	Super Champion	119687	32.50	24.25	8.31	3.55	2.25	16.88	3.76
30	1 - 1-1/4	24	RB	290	407	Super Champion	119696	32.50	24.25	8.31	3.55	2.25	16.88	3.76
60 tonnes														
30	1 - 1-1/4	12	BB	95	401	All Alloy High Capacity	8027292	20.32	12.12	8.66	2.78	2.50	10.75	3.50

\* Ultimate Load is 4 times the Working Load Limit.