



Crosby[®]

Lifting Clamps & Magnets

METRIC



Kito Crosby develops practical solutions for specific problems

Our mission is to be the innovative and quality leader in the field of lifting clamps by manufacturing products of uncompromising quality and providing tailored solutions for specific hoisting situations.

With the support of an enthusiastic and professional team—including our distributors and suppliers—we are fully committed to delivering high-quality branded products, excellent service, and dependable support. Our primary objective is to ensure the satisfaction of end-users.

Our facility is ISO 9001 – ANAB accredited, ensuring compliance with clearly defined standards.

Users of lifting clamps can be found in a variety of industries:

- Machine construction in a variety of industries
- Automotive industry
- Chemical industry
- Tank and vessel construction
- Aircraft industry
- Wind power energy
- Ship and yacht construction
- Offshore
- Land based industries
- Production and/or assembly of composite parts
- Production of steel constructions for buildings, bridges, etc.
- Pipe laying
- Road construction

High quality production methods

The production of Crosby IP Lifting Clamps utilizes high tech manufacturing techniques. Our welding robots, plasma cutting machine, CNC milling machines, in-house paint shop and modern assembly line are fully designed to deliver a consistent high quality product with:

- Improved markings
- Lower weight
- More reliable body construction
- Tougher camsegments

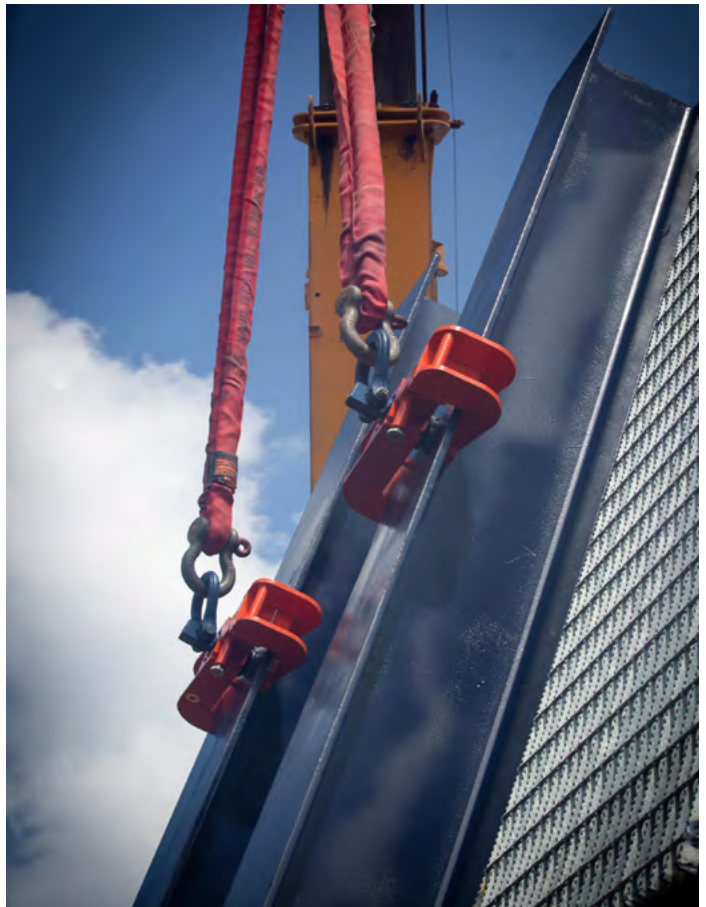
Points of recognition

Always use the right clamp for the right application. The brand name (Crosby IP), WLL, jaw opening and Proof Load test date are permanently stamped on the body. Each product is provided with a unique serial number that is stamped on the body and included on the test certificate.

Maximum reliability

Our R&D department is responsible for a complete product line that can be counted on to provide the strength you need. A Crosby IP clamp distinguishes itself from competition on different areas. The welded alloy steel body is designed for strength, and results in a clamp that is lighter and more compact. Where needed, the clamp is equipped with forged-alloy components.

The clamps are user friendly and contain many small features that enable them to withstand the heavy work conditions to which they are exposed.



Crosby IP clamps are 100% individually proof tested to 2 times the Working Load Limit. In addition, each clamp is RFID equipped, allowing for ease of inspection.

Innovative

Our innovations provide you effective solutions for your material handling applications. A way to save you time and money.

If our standard product range may not meet the clients specific needs, Kito Crosby can offer an extensive range of specials. For example, products that provide a suitable solution to a complex lifting challenge.

10 years guarantee

Maximum reliability. An attribute, which Kito Crosby commits to through the 10 year guarantee, available on all standard Crosby IP Lifting Clamps. This guarantee is linked to regular maintenance and the use of original parts.

Periodic inspections, preventive maintenance service and one or, when necessary, two overhaul services are the only conditions to preserve the 10 years guarantee.

The inspections shall be carried out by a qualified officer authorized by the Inspection Service Provider. The maintenance and overhaul services shall be carried out by a Kito Crosby accredited dealer.

Inspection, Repair & Spare parts

At Kito Crosby we recognize that quality and safety are never to be compromised. These values are at the core of our business.

Through our vast network of authorized and certified Inspection, Maintenance and Repair partners, Crosby offers local support to make sure your clamp can be used safely and properly, without the need to completely replace a worn out clamp.

Our authorized distributors stock maintenance kits and spare parts to ensure fast turn-around of the clamp.

Repair training: Designed for inspection and periodic maintenance of Crosby IP clamps. After successfully completing the hands-on repair training, service engineers will be awarded a certificate, valid for 4 years, qualifying them to perform periodic maintenance and repair services.

Industry Education & Technical Support

Kito Crosby provides practical and reliable solutions for specific lifting situations. Our team of specialized sales managers and product trainers is available globally. Kito Crosby has an intensive relationship with a carefully selected network of local authorized distributors who can provide you with professional advice regarding your specific lifting situation.

Specifically for the end-users of Crosby IP lifting clamps, we offer training, focused on the correct and safe use of the product. This ensures usage of the right clamp and in the proper manner, always.

The Lifting Clamp Application Assistant

The Lifting Clamp Application Assistant, located on the Kito Crosby website, is the perfect tool to find the right clamp for any particular lifting situation.

Depending on whether you would like to lift vertically, horizontally or if the choice for a clamp is based on the object to be lifted (drums, profiles, bulb profiles, pipe sections, etc.): the Clamp Assistant will guide you towards the right clamp for the job.

Scan the QR code for a direct link to our Clamp Assistant

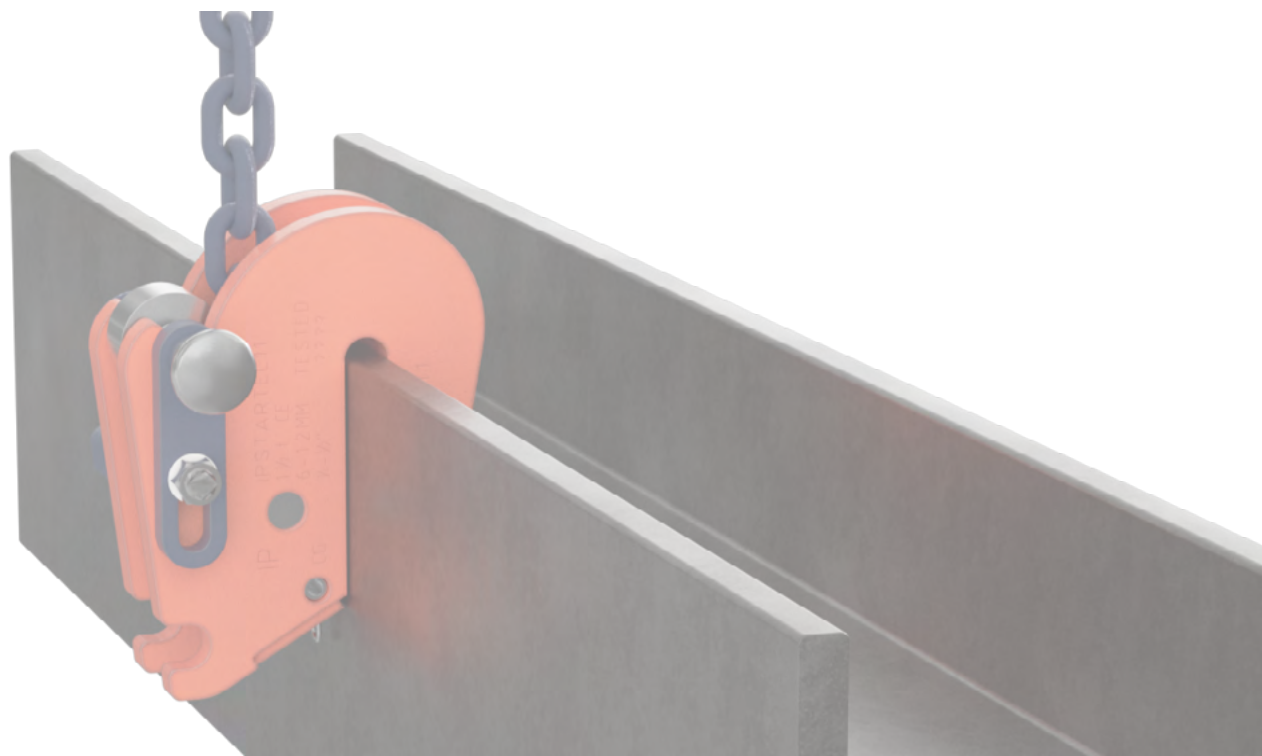




INDEX

Kito Crosby designs and manufactures practical solutions tailored to specific lifting challenges. Our lifting clamps are utilized across a wide range of applications and industries.

Model	VERTICAL TRANSPORT	
IPU10	Universal model	6-7
IP10	Basic model	8
IPNM10	Non-marring	9
IPU10A	Automatically locking	10
	HORIZONTAL TRANSPORT	
IPHNM10	Non-marring, with pretension	11
IPH10	Non-sagging, with magnets and pretension	11
IPH10E	Non-sagging, basic model	12
IPHOZ	Sagging plates	13
IPPE10	Bundles of plates	14
IPPE10NM	Bundles of plates, non-marring	14
IPBC	With pretension	15
IPHGZ – IPHGUZ	With locking device	15
IPPH – IPPHI	Pipe hook, nylon insert	16
MAGNEX	Lifting magnet	17
	HORIZONTAL TRANSPORT OF BEAMS	
IPBK10	Transfer and stacking H-position	18
IPBHZ	Transfer and stacking I-position	19
IPTK – IPTKW – IPTKU – IPTKUD	Transfer beams and attach tackle eye	20
IPTKA	Transfer beams in all directions	21
IPBCNS	Transfer wide flange beams and plate girders	22
IPSTARTEC11	Controlled tilting of beams	23
	MISCELLANEOUS	
IPSC10	Positioning and pulling	24
IPBG	Transfer road barriers	24
IPBTO10	Temporary tackle eye	25
IPBUUZ – IPBUZ	Bulb profiles	26
IPSBUEZ	Ship sections	27
IPDV – IPVK	Handling of drums	28
IPCC	Transfer concrete pipe sections and wells	29



IPU10 Lifting Clamp

Maximum Reliability

For over 50 years, Crosby IP lifting clamps have proven their reliability in markets around the world. A Crosby IP clamp differs from the competition in a number of ways. The welded alloy steel body, designed for strength and resulting in a lighter, more compact clamp, is just one example of how advanced these clamps are.

Lifting Eye

Available with straight (IP10) or swiveling eye (IPU10), allowing sideloading
Alloy steel, quenched and tempered



Clear Markings

- Manufacturer
- Model, min. & max. WLL
- Jaw opening in mm & inch
- Serial number
- CE marking

Welded Body

Alloy steel body, combines strength with low weight, made possible by high-strength steel and carefully considered details such as location of welds.

Camsegment

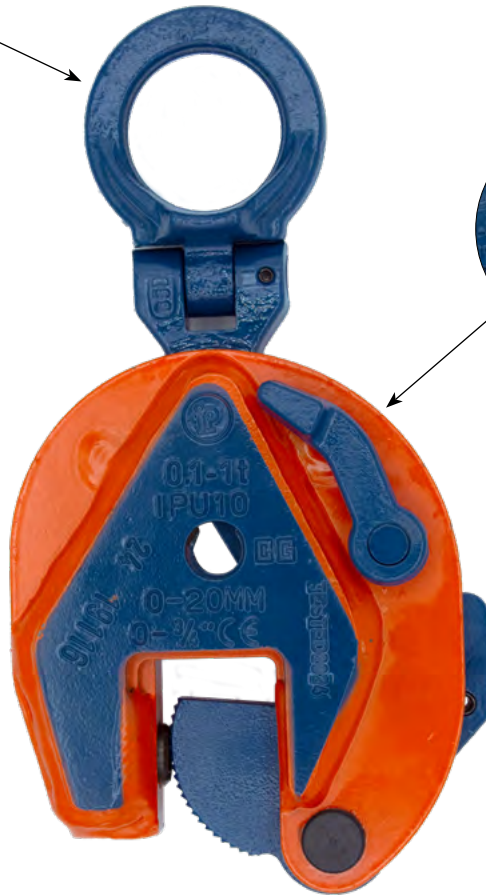
Different camsegment options available:

Easy to use Latch

- Locked open and locked closed position
- When closed, pretension is applied on the material
- When closed, no protruding lever outside the body

Replacement Parts

Quick and easy assembly
Maintenance and Repair Kits available, to ensure a quick and correct repair.
Single parts available



Standard, for materials with surface hardness to 363 HV10 (345 HB)



Stainless steel, with surface hardness to 363 HV10 (345 HB)



Harder materials, with surface hardness to 472 HV10 (450 HB)

IPU10



- Universal - for lifting in any direction.
- Available in capacities of .5 thru 30 metric tons (higher Working Load Limits are available upon request).
- Wide variety of jaw openings available: 0 to 150mm.
- Welded alloy steel body for strength and smaller size. Forged alloy components, where required.
- Individually Proof Tested to 2 times the Working Load Limit with certification.
- Crosby IP, Working Load Limit and jaw opening permanently stamped on body.
- Each product is individually serialized, with the serial number and Proof Load test date stamped on body. User manual with test certificate is included with each clamp.
- Available in a variety of styles:
 - IPU10 - Standard clamp for materials with a surface hardness to 363HV10 (345 HB).
 - IPU10J - Larger jaw opening.
 - IPU10S - For use with stainless steel material.
 - IPU10H - For use with materials with a surface hardness to 472HV10 (450 HB).
- Full 180° turning range for material transfer, turning or moving.
- Lock open, lock closed ability with latch for pretension on material and then release of material.
- Maintenance and repair kits are available.
- Minimum WLL is 5% of maximum WLL for .5t IPU10 only.
- Minimum WLL is 10% of maximum WLL for all other IPU10, IPU10J, IPU10S, IPU10H clamps.
- For use with materials with a surface hardness to 279HV10, only 5% of minimum WLL is needed.
- Temperature range -40 °C (-40 °F) to +100 °C (+212 °F)

IPU10S

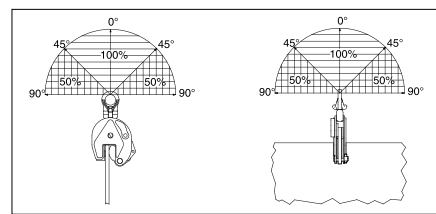
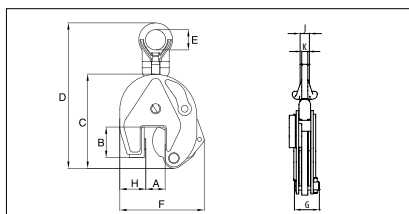


Model IPU10 / IPU10J / IPU10S / IPU10H



Model	Working Load Limit (t)*	Stock No.	Weight Each (kg)	Dimensions (mm)										Maintenance Kit Stock No.
				Jaw A	B	C	D	E	F	G	H	J	K	
IPU10	0.5	2701675	1.9	0 - 16	44	130	216	40	115	42	28	-	11	2715054
IPU10	1	2701663	2.4	0 - 20	45	139	225	40	127	42	38	-	11	2715009
IPU10	2	2701677	8.5	0 - 35	78	201	368	70	188	64	55	-	16	2715063
IPU10	3	2701665	14.8	0 - 40	100	253	436	75	222	78	60	-	20	2715018
IPU10	4.5	2701667	16.0	0 - 40	100	253	436	75	227	82	65	-	20	2715018
IPU10	6	2701669	24.0	0 - 50	126	302	525	80	292	84	95	44	20	2715036
IPU10	9	2701671	29.5	0 - 50	126	325	552	80	310	94	104	44	20	2715288
IPU10	12	2701679	57.0	0 - 54	160	392	616	80	433	121	137	41	25	2715102
IPU10	16	2701683	79.0	5 - 64	180	463	736	88	492	121	153	45	25	2715108
IPU10	22.5	2701687	126.0	5 - 80	222	554	863	110	565	139	186	49	25	2715114
IPU10	30	2701691	141.0	5 - 80	222	554	868	110	580	153	186	54	30	2715120
With larger jaw opening														
IPU10J	0.5	2701647	1.9	15 - 30	45	128	209	40	128	42	32	-	11	2715054
IPU10J	1	2702463	2.5	20 - 40	55	151	221	40	141	42	41	-	11	2715012
IPU10J	3	2702465	17.3	40 - 80	115	270	432	75	277	78	67	-	20	2715021
IPU10J	4.5	2702467	18.9	40 - 80	115	270	432	75	281	82	72	-	20	2715021
IPU10J	6	2702469	26.5	50 - 100	126	302	515	80	336	84	95	44	20	2715040
IPU10J	9	2701673	30.5	50 - 100	126	325	550	80	360	94	105	44	20	2715050
IPU10J	12	2701681	65.0	54 - 108	178	438	662	80	491	121	136	41	25	2715105
IPU10J	16	2701685	85.0	64 - 128	208	521	784	88	562	121	160	45	25	2715111
IPU10J	22.5	2701689	149.0	80 - 155	255	628	938	110	660	139	196	49	25	2715117
IPU10J	30	2701693	165.0	80 - 155	255	628	942	110	660	153	196	54	30	2715123
For stainless steel - with universal hoisting eye														
IPU10S	0.5	2702275	1.9	0 - 16	44	130	216	40	115	42	28	-	11	2715234
IPU10S	1	2702263	2.4	0 - 20	45	139	225	40	127	42	38	-	11	2715243
IPU10S	2	2702277	8.5	0 - 35	78	201	368	70	188	64	55	-	16	2715252
IPU10S	3	2702265	14.8	0 - 40	100	253	436	75	222	78	60	-	20	2715253
IPU10S	4.5	2702267	16.0	0 - 40	100	253	436	75	227	82	65	-	20	2715253
IPU10S	6	2702269	24.0	0 - 50	126	302	525	80	292	84	95	44	20	2715254
IPU10S	9	2702271	29.5	0 - 50	126	325	552	80	310	94	104	44	20	2715255
For very hard materials - with universal hoisting eye														
IPU10H	0.5	2702175	1.9	0 - 16	44	130	216	40	115	42	28	-	11	2715207
IPU10H	0.75	2702163	2.4	0 - 20	45	139	225	40	127	42	38	-	11	2729552
IPU10H	1	2702177	7.6	0 - 35	78	201	368	70	188	64	55	-	16	2715216
IPU10H	2	2702165	14.8	0 - 40	100	253	436	75	222	78	60	-	20	2715225
IPU10H	3	2702167	16.0	0 - 40	100	253	436	75	227	82	65	-	20	2715225
IPU10H	4.5	2702169	24.0	0 - 50	126	302	525	80	292	84	95	44	20	2715227
IPU10H	6	2702171	29.5	0 - 50	126	325	552	70	310	94	104	44	20	2715229

*Design Factor based on EN 13155 and ASME B30.20.



For vertical lifting, turning and transfer



IP10

- Available in capacities of .5 through 30 metric tons (higher Working Load Limits are available upon request).
- Wide variety of jaw openings available: 0 to 155mm.
- Welded alloy steel body for strength and smaller size. Forged alloy components, where required.
- Individually Proof Tested to 2 times the Working Load Limit with certification.
- Crosby IP, Working Load Limit and jaw opening permanently stamped on body.
- Each product is individually serialized, with the serial number and Proof Load test date stamped on body. User manual and test certificate included with each clamp.
- Available in a variety of styles:
 - IP10 - Standard clamp for materials with a surface hardness to 363HV10 (345 HB).
 - IP10J - Larger jaw opening.
 - IP10S - For use with stainless steel material.
 - IP10H - For use with materials with a surface hardness to 472HV10 (450 HB).
- Full 180° turning range for material transfer, turning or moving.
- Lock open, lock closed ability with latch for pretension on material and then release of material.
- Maintenance and repair kits are available.
- Minimum WLL is 5% of maximum WLL for .5t IP10 only.
- Minimum WLL is 10% of maximum WLL for all other IP10, IP10J, IP10S, IP10H clamps.
- For plate surface hardness till 279HV10, only 5% of minimum WLL is needed.
- Temperature range -40 °F (-40 °C) to +212 °F (+100 °C)



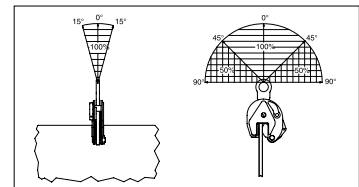
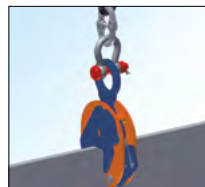
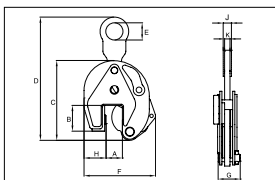
IP10H

Model IP10 / IP10J / IP10S / IP10H



Model	Working Load Limit (t)*	Stock No.	Weight Each (kg)	Dimensions (mm)										Maintenance Kit Stock No.
				Jaw A	B	C	D	E	F	G	H	J	K	
IP10	0.5	2701674	1.8	0 - 16	44	130	203	40	115	42	28	-	11	2715054
IP10	1	2701662	2.2	0 - 20	45	139	212	40	127	42	38	-	11	2715009
IP10	2	2701676	7.6	0 - 35	78	201	330	70	188	64	55	-	16	2715063
IP10	3	2701664	13.8	0 - 40	100	253	434	75	222	78	60	-	20	2715018
IP10	4.5	2701666	15.0	0 - 40	100	253	434	75	227	82	65	-	20	2715018
IP10	6	2701668	23.5	0 - 50	126	302	517	80	292	84	95	40	20	2715036
IP10	9	2701670	27.5	0 - 50	126	325	445	80	310	94	104	44	25	2715288
IP10	12	2701678	49.0	0 - 54	160	392	574	80	433	121	137	41	25	2715102
IP10	16	2701682	68.0	5 - 64	180	463	686	88	492	121	153	49	25	2715108
IP10	22.5	2701686	108.0	5 - 80	222	554	803	110	565	153	186	54	30	2715114
IP10	30	2701690	124.0	5 - 80	222	554	803	110	565	153	186	54	30	2715120
With larger jaw opening														
IP10J	0.5	2701646	1.8	15 - 30	45	128	209	40	128	42	32	-	11	2715054
IP10J	1	2702462	2.5	20 - 40	55	151	207	40	141	42	41	-	11	2715012
IP10J	3	2702458	16.4	40 - 80	115	271	432	75	276	78	67	-	20	2715021
IP10J	4.5	2702460	18.0	40 - 80	115	271	432	75	281	82	72	-	20	2715021
IP10J	6	2701705	24.5	50 - 100	126	302	506	80	336	84	95	40	20	2715040
IP10J	9	2701672	28.5	50 - 100	126	325	542	80	360	94	105	44	25	2715050
IP10J	12	2701680	58.0	54 - 108	178	438	620	80	491	121	136	41	25	2715105
IP10J	16	2701684	80.0	64 - 128	208	521	734	88	562	121	160	45	25	2715111
IP10J	22.5	2701688	131.0	80 - 155	255	628	883	110	660	139	196	49	25	2715117
IP10J	30	2701692	147.0	80 - 155	255	628	887	110	660	153	196	54	30	2715123
For stainless steel - with fixed hoisting eye														
IP10S	0.5	2702274	1.8	0 - 16	44	130	203	40	115	42	28	11	11	2715234
IP10S	1	2702262	2.2	0 - 20	45	139	212	40	127	42	38	11	11	2715243
IP10S	2	2702276	7.6	0 - 35	78	201	330	70	188	64	55	16	16	2715252
IP10S	3	2702264	13.8	0 - 40	100	253	434	75	222	78	60	20	20	2715253
IP10S	4.5	2702266	15.0	0 - 40	100	253	434	75	227	82	65	20	20	2715253
IP10S	6	2702268	23.5	0 - 50	126	302	517	80	292	84	95	20	20	2715254
IP10S	9	2702270	27.5	0 - 50	126	325	544	80	310	94	104	25	25	2715255
For very hard materials - with fixed hoisting eye														
IP10H	0.5	2702174	1.8	0 - 16	44	130	207	40	115	42	28	11	11	2715207
IP10H	0.75	2702162	2.2	0 - 20	45	139	219	40	130	42	38	11	11	2729552
IP10H	1	2702176	7.6	0 - 35	78	201	330	70	188	64	55	16	16	2715216
IP10H	2	2702164	13.8	0 - 40	100	253	434	75	222	78	60	20	20	2715225
IP10H	3	2702166	15.0	0 - 40	100	253	434	75	227	82	65	20	20	2715225
IP10H	4.5	2702168	23.5	0 - 50	126	302	517	80	292	84	95	20	20	2715227
IP10H	6	2702170	27.5	0 - 50	126	325	544	80	310	92	105	25	25	2715229

*Design Factor based on EN 13155 and ASME B30.20. Model IP10R (remote control opening and closing via a rope) available on request.



For use in almost all sectors of industry where, during the lift or transfer, no damage to the material is permitted

IPNM10N



- Available in capacities of .5 , 1 and 2 metric tons (higher Working Load
- Limits are available upon request).
- Wide variety of jaw openings available: 0 to 40mm.
- Welded alloy steel body for strength and smaller size. Forged alloy components, where required.
- Individually Proof Tested to 2 times the Working Load Limit with certification.
- Crosby IP, Working Load Limit and jaw opening permanently stamped on body.
- Each product is individually serialized, with the serial number and Proof Load test date stamped on body. User manual with test certificate is included with each clamp.
- Full 180° turning range for material transfer, turning or moving.
- Lock open, lock closed ability with latch for pretension on material and then release of material.
- Material must be clean and dry.
- There is no minimum WLL required.
- Maintenance replacement kits are available.
- Temperature range -20° C (-4° F) to 70° C (158° F)
- Optional with brake pad lining for temperature range -40° C (-40° F) to +200° C (+392° F)
- Special jaw openings or curved jaws upon request.

IPNM10P

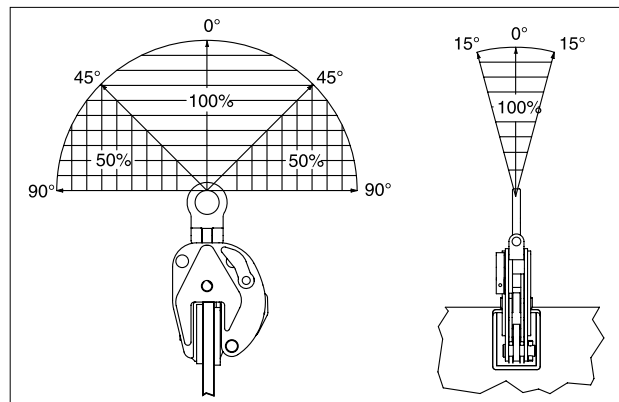
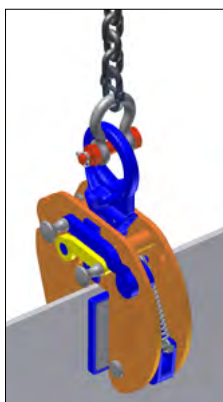
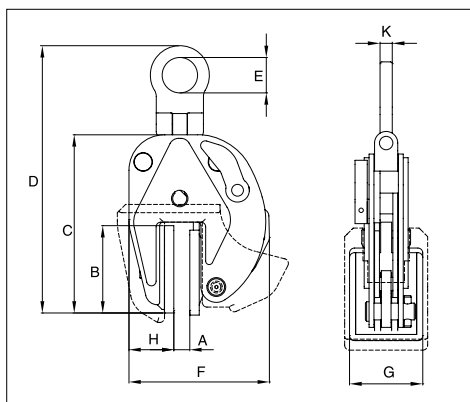


Model IPNM10



Model	Working Load Limit (t)*	Stock No.	Weight Each (kg)	Dimensions (mm)										Maintenance Kit Stock No.
				Jaw A	B	C	D	E	F	G	H	K		
IPNM10N	0.5	2703811	2.7	0 - 10	84	159	235	40	128	60	42	11	2715414	
IPNM10N	1	2703738	4.4	0 - 20	97	209	278	40	184	80	56	11	2715423	
IPNM10	2	2703442	14.5	0 - 40	153	258	396	70	296	100	161	16	2729084	
With protection cap														
IPNM10P	0.5	2703278	2.8	0 - 10	82	157	221	40	145	68	48	11	2729440	
IPNM10P	1	2703279	4.5	0 - 20	97	195	276	40	205	82	66	11	2715180	
With larger jaw opening														
IPNM10NJ	1	2703814	4.7	20 - 37	97	220	321	40	200	80	56	11	2715468	
IPNM10NJ1	1	2703819	5.5	0 - 25	97	238	351	40	213	80	63	11	2729037	

* Design Factor based on EN 13155 and ASME B30.20.

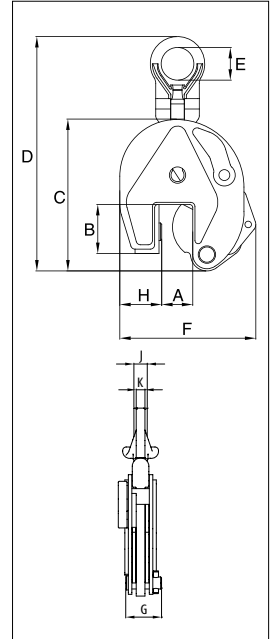


For vertical transport of plates, with automatic closing feature

IPU10A



- Available in capacities of 1, 2 and 6 metric tons (higher Working Load Limits are available upon request).
- Jaw openings available: 0 to 50mm.
- Welded alloy steel body for strength and smaller size. Forged alloy components where required.
- Individually Proof Tested to 2 times the Working Load Limit with certification.
- Crosby IP, Working Load Limit and jaw opening permanently stamped on body.
- Each product is individually serialized, with the serial number and Proof Load test date stamped on body. User manual with test certificate is included with each clamp.
- Full 180° turning range for material transfer, turning or moving.
- Lock open, lock closed ability with latch for pretension on material and then release of material.
- Minimum WLL of 10% of Maximum WLL.
- Maintenance and repair kits are available.
- For use with materials with a plate surface hardness to 279HV10, only 5% of minimum WLL is needed.
- Temperature range -40 °C (-40 °F) to +100 °C (+212 °F)

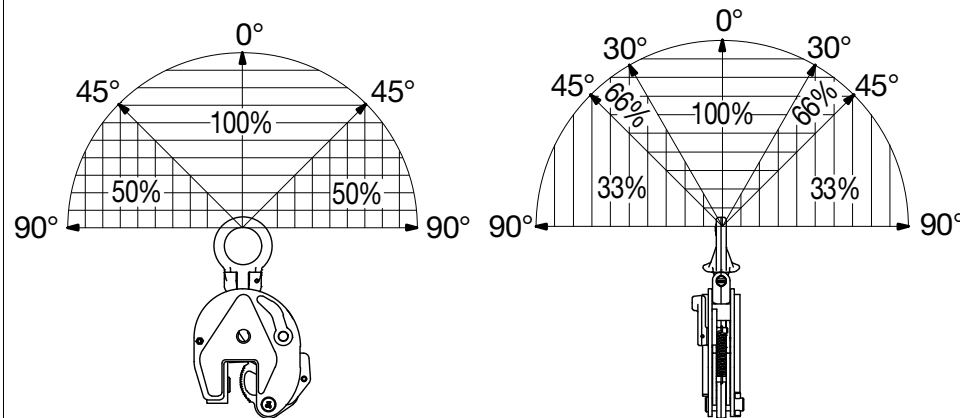


Model IPU10A

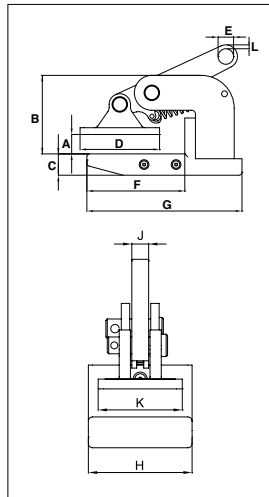
CE Load Rated

Model	Working Load Limit (t)*	Stock No.	Weight Each (kg)	Dimensions (mm)										Maintenance Kit Stock No.
				Jaw A	B	C	D	E	F	G	H	J	K	
IPU10A	1	2701628	2.3	0 - 20	45	139	225	40	127	42	38	-	11	2715064
IPU10A	2	2701629	8.4	0 - 35	78	201	368	70	188	64	55	-	16	2715065
IPU10A	6	2701638	25.4	0 - 50	126	302	525	80	292	84	95	44	20	2715066

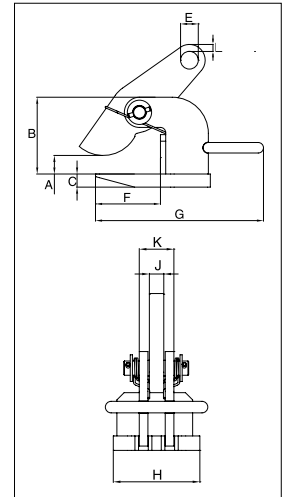
* Design Factor based on EN 13155 and ASME B30.20.



IPHNM10



IPH10



For horizontal lift and transfer with pretension system

- Available in capacities of .5 through 12 metric tons (higher Working Load Limits are available upon request).
- Jaw openings available: 0 to 120mm.
- Welded alloy steel body for strength and smaller size. Forged alloy components, where required.
- Individually Proof Tested to 2 times the Working Load Limit with certification.
- Crosby IP, Working Load Limit and jaw opening permanently stamped on body.
- Each product is individually serialized, with the serial number and Proof Load test date stamped on body.
- User manual with test certificate is included with each clamp.
- Maintenance and repair kits are available.

IPHNM10 Horizontal Lifting Clamps



Model	Working Load (per pair) Limit (t)*	Stock No.	Weight Each (kg)	Dimensions (mm)										
				Jaw A	B	C	D	E	F	G	H	J	K	L
IPHNM10	0.5	2703287	2.0	0 - 20	81	22	82	16	101	160	74	12	60	4
IPHNM10	1	2703288	3.5	0 - 35	93	30	92	16	103	164	74	12	60	7
IPHNM10	2	2703290	7.5	0 - 30	139	30	131	22	166	245	100	20	74	9
IPHNM10J	2	2703291	8.0	30 - 60	169	30	131	22	166	245	100	20	74	9

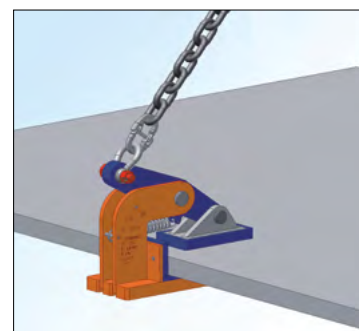
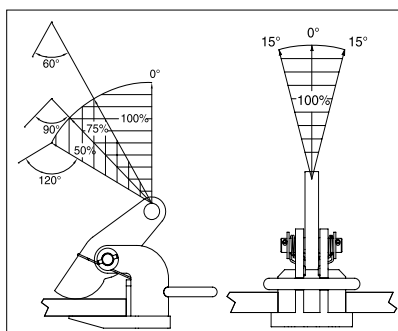
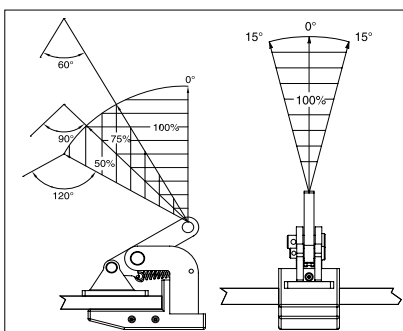
*Design Factor based on EN 13155 and ASME B30.20.

Model IPH10 / IPH10J: With Spring Loaded Tension, Magnets and Handle



Model	Working Load (per pair) Limit (t)*	Stock No.	Weight Each (kg)	Dimensions (mm)									
				Jaw A	B	C	E	F	G	H	J	K	L
IPH10	0.5+	2703297	1.8	0 - 20	86	12	16	103	150	60	12	27	4
IPH10	1+	2703298	2.5	0 - 35	100	16	16	103	150	60	12	31	7
IPH10	2	2703522	5.5	0 - 60	117	16	22	109	256	110	20	40	9
IPH10	3	2703523	7.5	0 - 60	117	20	26	109	266	120	20	48	11
IPH10	4.5	2703524	10.5	0 - 60	132	25	30	104	280	130	20	48	12
IPH10	6	2703525	13.0	0 - 60	143	25	36	123	320	130	20	48	14
IPH10	9	2703526	18.5	0 - 60	157	30	43	133	330	140	25	62	16
IPH10	12	2703527	21.5	0 - 60	172	30	47	141	353	150	25	62	17
With larger jaw opening													
IPH10J	3	2703533	9.0	60 - 120	177	20	26	109	266	120	20	48	11
IPH10J	4.5	2703534	12.0	60 - 120	192	25	30	104	280	130	20	48	12
IPH10J	6	2703535	15.0	60 - 120	203	25	36	123	320	130	20	48	14
IPH10J	9	2703536	20.5	60 - 120	217	30	43	133	330	140	25	62	16
IPH10J	12	2703537	24.0	60 - 120	232	30	47	141	353	150	25	62	17

*Design Factor based on EN 13155 and ASME B30.20. +No handle or magnets.

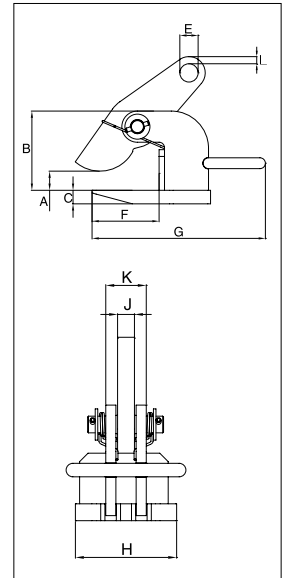


IPH10E



For horizontal lifting and transfer

- Available in capacities of 2.0 thru 12 metric tons.
- Wide variety of jaw openings available: 0 to 120mm.
- Welded alloy steel body for strength and smaller size. Forged alloy, components where required.
- Equipped with handle for easy placement.
- Individually Proof Tested to 2 times the Working Load Limit with certification.
- Crosby IP, Working Load Limit and jaw opening permanently stamped on body.
- Each product is individually serialized, with the serial number and Proof Load test date stamped on body. User manual with test certificate is included with each clamp.
- Maintenance and repair kits are available.
- Temperature range -40 °C (-40 °F) to +100 °C (+212 °F)



Model IPH10E



Model	Working Load (per pair) Limit (t)*	Stock No.	Weight Each (kg)	Dimensions (mm)									
				Jaw A	B	C	E	F	G	H	J	K	L
IPH10E	2	2703542	5.5	0 - 60	117	16	22	109	256	110	20	40	9
IPH10E	3	2703543	7.5	0 - 60	117	20	26	109	266	120	20	48	11
IPH10E	4.5	2703544	10.5	0 - 60	132	25	30	104	280	130	20	48	12
IPH10E	6	2703545	13.0	0 - 60	143	25	36	123	320	130	20	48	14
IPH10E	9	2703546	18.5	0 - 60	157	30	43	133	330	140	25	62	16
IPH10E	12	2703547	21.5	0 - 60	172	30	47	141	353	150	25	62	17

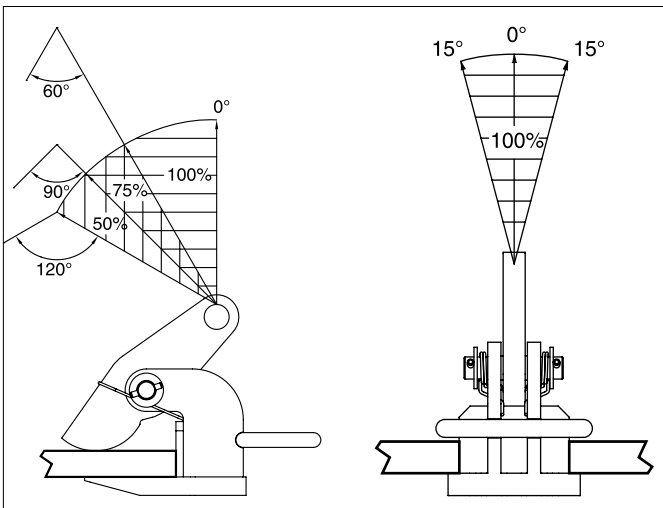
*Design Factor based on EN 13155 and ASME B30.20.

Model IPH10JE



Model	Working Load (per pair) Limit (t)*	Stock No.	Weight Each (kg)	Dimensions (mm)									
				Jaw A	B	C	E	F	G	H	J	K	L
IPH10JE	3	2703553	9.0	60 - 120	177	20	26	109	266	120	20	48	11
IPH10JE	4.5	2703554	12.0	60 - 120	192	25	30	104	280	130	20	48	12
IPH10JE	6	2703555	15.0	60 - 120	203	25	36	123	320	130	20	48	14
IPH10JE	9	2703556	20.5	60 - 120	217	30	43	133	330	140	25	62	16
IPH10JE	12	2703557	24.0	60 - 120	232	30	47	141	353	150	25	62	17

*Design Factor based on EN 13155 and ASME B30.20.

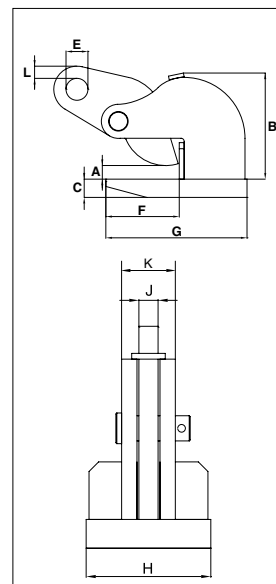


IPHOZ



For horizontal lifting and transfer

- Available in capacities of .75 through 12 metric tons (higher Working Load Limits are available upon request).
- Wide variety of jaw openings available: 0 to 60mm.
- Welded alloy steel body for strength and smaller size. Forged alloy, components where required.
- Equipped with handle for easy placement.
- Individually Proof Tested to 2 times the Working Load Limit with certification.
- Crosby IP, Working Load Limit and jaw opening permanently stamped on body.
- Each product is individually serialized, with the serial number and Proof Load test date stamped on body. User manual with test certificate is included with each clamp.
- Maintenance and repair kits are available.
- Temperature range -40 °C (-40 °F) to +100 °C (+212 °F)

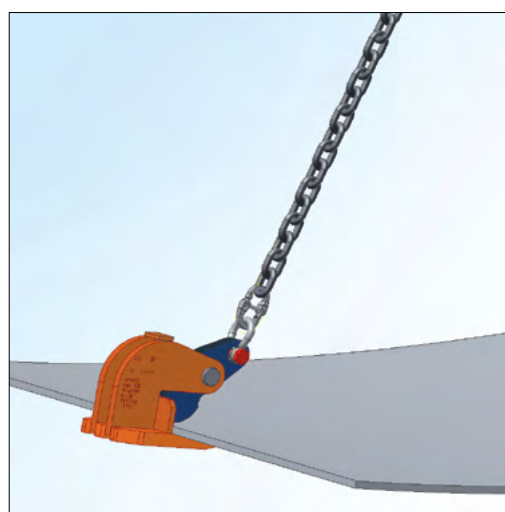
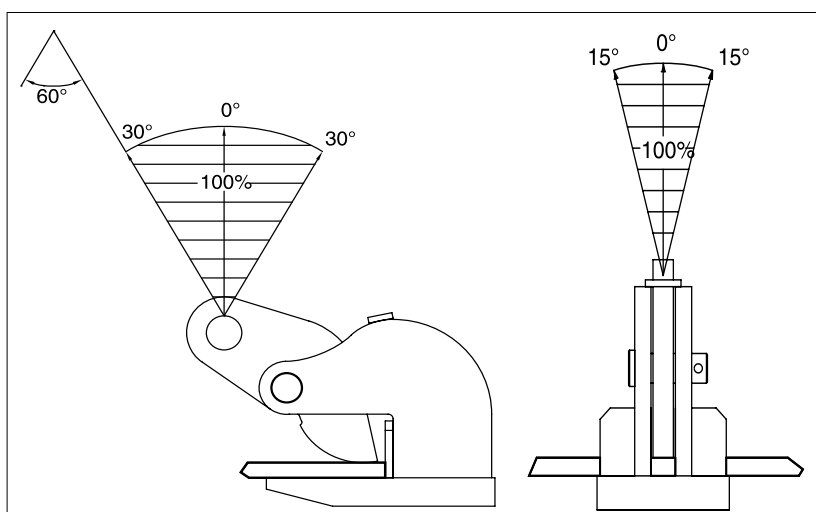


IPHOZ Horizontal Lifting Clamp



Model	Working Load (per pair) Limit (t)*	Stock No.	Weight Each (kg)	Dimensions (mm)									
				Jaw A	B	C	E	F	G	H	J	K	L
IPHOZ	0.75	2705401	3.0	0 - 30	94	16	16	70	118	81	12	31	12
IPHOZ	1.5	2705402	5.5	0 - 45	133	16	22	125	192	100	16	36	12
IPHOZ	3	2705403	8.0	0 - 45	137	20	26	125	200	120	20	48	10
IPHOZ	4.5	2705404	9.5	0 - 45	138	25	30	126	220	120	20	50	10
IPHOZ	6	2705405	15.5	0 - 60	171	30	36	135	235	130	20	56	20
IPHOZ	9	2705406	25.0	0 - 60	211	30	43	166	276	160	25	62	20
IPHOZ	12	2705407	29.0	0 - 60	217	40	47	168	294	190	25	62	19

*Design Factor based on EN 13155 and ASME B30.20.



IPPE10B



For lifting and transporting non-bendable sheet metal in a horizontal position.

- Available in capacities of 3 through 12 metric tons (higher Working Load Limits are available upon request).
- Wide variety of jaw openings available: 0 to 420mm
- Welded alloy steel body for strength and smaller size. Forged alloy components, where required.
- Individually Proof Tested to 2 times the Working Load Limit with certification.
- Crosby IP, Working Load Limit and jaw opening permanently stamped on body.
- Each product is individually serialized, with the serial number and Proof Load test date stamped on body. User manual with test certificate is included with each clamp.
- Maintenance and repair kits are available.
- IPPE10: Magnets in foot plate (also applies for D and H Type).
- IPPE10NM: Non-marring (also applies for D and H-Type).
- IPPE10: Temperature range -40 °C (-40 °F) to +100 °C (+212 °F)
- IPPE10NM: Temperature range -20 °C (-4 °F) to +70 °C (+158 °F)

IPPE10DNM

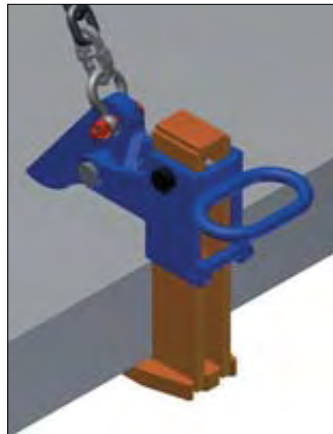
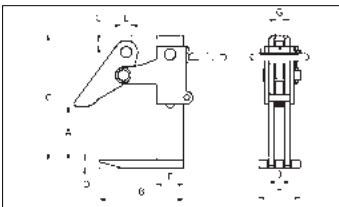
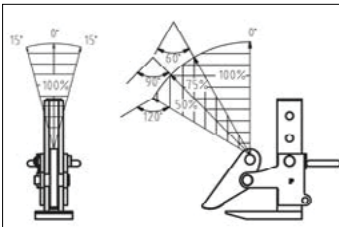


Model IPPE10 / IPPE10NM

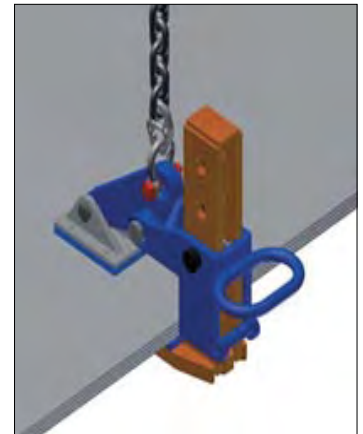
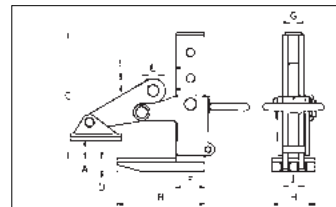
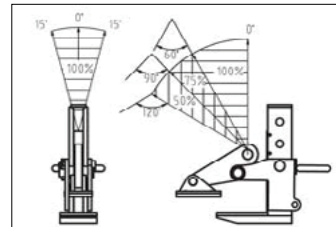


Model	Working Load Limit (t)*	Stock No.	Weight Each (kg)	Dimensions (mm)									
				Jaw A	B	C	D	E	F	G	H	J	L
IPPE10B	3	2703862	11.5	0-180	204	322	20	26	66	20	100	50	15
IPPE10B	6	2703871	16.3	0-180	220	340	25	30	74	20	140	60	13
IPPE10B	9	2703888	24.8	0-180	248	365	25	34	90	20	190	70	13
IPPE10B	12	2703921	32.7	0-180	262	376	30	40	90	25	200	70	18
With larger jaw opening													
IPPE10D	3	2703882	12.9	0-300	204	442	20	26	66	20	100	50	15
IPPE10H	6	2703875	19.4	0-420	220	580	25	30	74	20	140	60	13
IPPE10H	9	2703890	29.8	0-420	248	605	25	34	90	20	190	70	13
IPPE10H	12	2703923	38.9	0-420	262	616	30	40	90	25	200	70	18
Non-Marring types													
IPPE10BNM	3	2703864	12.4	0-180	204	322	30	26	68	20	100	50	15
IPPE10BNM	6	2703872	17.3	0-180	220	340	35	30	76	20	140	60	13
IPPE10BNM	9	2703894	27.7	0-180	248	365	35	34	92	20	190	70	13
IPPE10BNM	12	2703927	35.2	0-180	262	376	40	40	92	25	200	70	15
Non-Marring types with larger jaw opening													
IPPE10DNM	3	2703886	13.9	0-300	204	442	20	26	66	20	100	50	15
IPPE10HNM	6	2703879	20.6	0-420	220	580	25	30	74	20	140	60	13
IPPE10HNM	9	2703920	32.9	0-420	248	605	25	34	90	20	190	70	13
IPPE10HNM	12	2703929	41.5	0-420	262	616	30	40	90	25	200	70	18

*Design Factor based on EN 13155 and ASME B30.20.



IPPE10



IPPE10NM

IPBC



For horizontal transfer - with pretension system

- Available in capacities of 1 through 4.5 metric tons (Higher Working Load Limits are available upon request).
- Jaw openings available: 0 to 40mm.
- Welded alloy steel body for strength and smaller size. Forged alloy, components where required.
- Equipped with handle for easy placement.
- Individually Proof Tested to 2 times the Working Load Limit with certification.
- Crosby IP, Working Load Limit and jaw opening permanently stamped on body.
- Each product is individually serialized, with the serial number and Proof Load test date stamped on body. User manual with test certificate is included with each clamp.
- Maintenance and repair kits are available.
- Manufactured by an ISO 9001 facility.
- Temperature range -40 °C (-40 °F) to +100 °C (+212 °F)

IPHGUZ

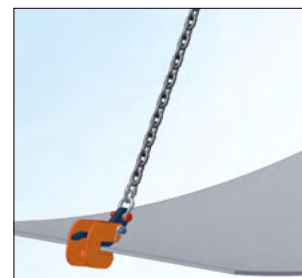
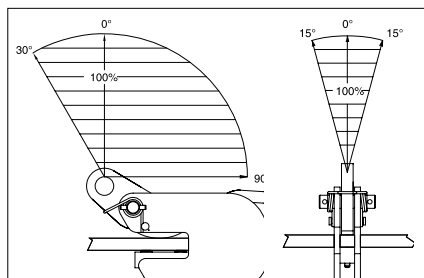
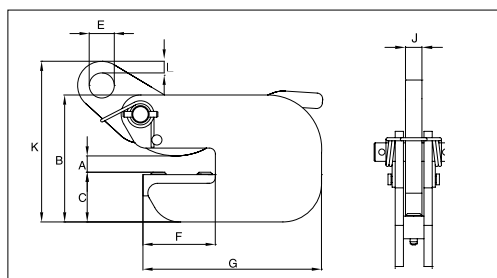


Model IPBC



Model	Working Load Limit (t)*	Stock No.	Weight Each (kg)	Dimensions (mm)										Maintenance Kit Stock No.
				Jaw A	B	C	D	E	F	G	H	J	K	
IPBC	1	2700410	3.5	0 - 20	132	52	26	75	185	36	16	182	12	2715189
IPBC	2	2700411	6.5	0 - 25	152	62	30	82	210	49	20	218	15	2715198
IPBC	3	2700412	8.5	0 - 25	157	66	30	82	210	57	20	225	15	2715198

*Design Factor based on EN 13155 and ASME B30.20.

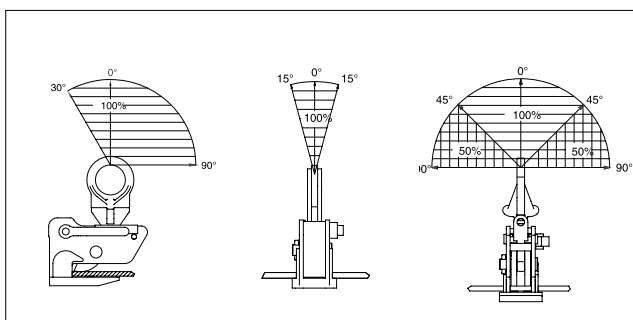
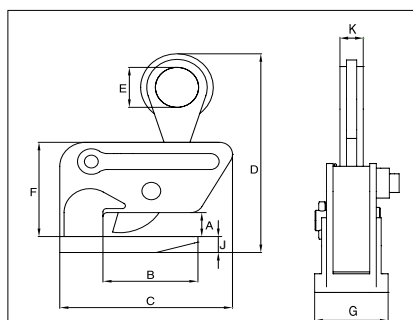


IPHGUZ: Universal Lifting Eye / IPHGZ: Fixed Hoisting Eye



Model	Working Load Limit (t)*	Stock No.	Weight Each (kg)	Dimensions (mm)									Maintenance Kit Stock No.
				Jaw A	B	C	D	E	F	G	H	K	
IPHGUZ	1.5	2705455	9.0	0 - 25	110	232	287	70	139	90	20	16	2715450
IPHGUZ	3	2705456	19.9	0 - 40	119	253	348	75	175	120	25	20	2715452
IPHGUZ	4.5	2705457	30.0	0 - 40	119	301	370	80	175	155	30	44	2715454
Fixed Hoisting Eye													
IPHGZ	0.75	2705451	4.0	0 - 25	82	148	206	50	99	98	12	22	-
IPHGZ	1.5	2705452	7.3	0 - 25	110	200	250	50	118	90	20	28	-
IPHGZ	3	2705453	12.3	0 - 40	120	227	305	70	148	120	25	32	-
IPHGZ	4.5	2705454	25.0	0 - 40	120	284	381	70	181	155	30	40	-

*Design Factor based on EN 13155 and ASME B30.20.

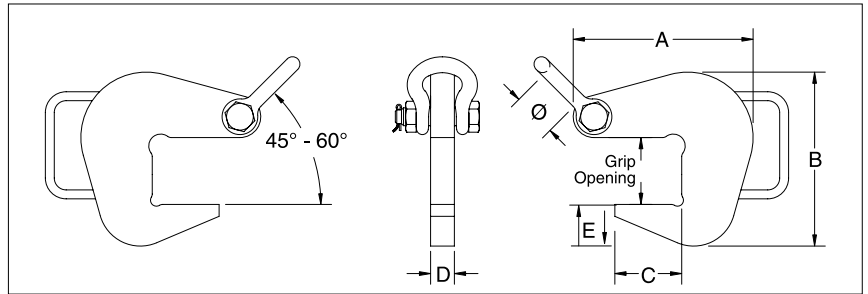


IPPH



For lifting pipe, tube, or any similarly shaped fabrications

- Crosby IP Pipe Hooks provide a fast and efficient method for lifting pipe, tube or any similarly shaped fabrications.
- Alloy steel plate construction.
- Equipped with a convenient handle.
- Equipped with a Bolt Type Shackle.
- Optional non marring inserts available.
- Used in pairs with 45° - 60° horizontal angle or 60° - 90° included angle.
- Temperature range -40 °F (-40 °C) to +212 °F (+100 °C)



Model IPPH



Model	Working Load (per pair) Limit (t)*	Stock No.	Weight Each (kg)	Grip Opening (mm)**	Dimensions (mm)						Shackle Size (in)	Optional Nylon (PA6) Inserts
					A	B	C	D	E	Ø		
IPPH	2	2734500	2.7	52.3	148	129	52	25	32	43	5/8	2734900 2734909
IPPH	4	2734509	4.5	71.4	192	186	71	25	44	43	5/8	2734918
IPPH	6	2734518	7.7	103	259	256	103	25	57	51	3/4	2734927
IPPH	10	2734527	17.3	154	376	383	154	25	89	69	1	2734936
IPPH	15	2734536	21.8	154	376	392	154	30	98	74	1 1/8	2734945
IPPH	20	2734545	23.1	154	376	407	154	30	113	74	1 1/8	2734945

*Design factor based on EN13155 and ASME B30.20.

**NOTE: To determine grip opening when equipped with an insert, see the dimensions in the Pipe Hook Inserts table below.

- Replaceable nylon (PA6) inserts for use with the IPPHI
- Pipe Hook that minimizes thread and pipe damage.

IPPHI



Pipe Hook Inserts

Model	Stock No.	ID of Pipe (mm)	Grip Opening (mm)
IPPHI	2734900	76 - 305	41
	2734909	305 - 457	44
	2734918	457 - 762	63
	2734927	762 - 1067	95
	2734936	1067 - 1329	145
	2734945	1067 - 1329	145

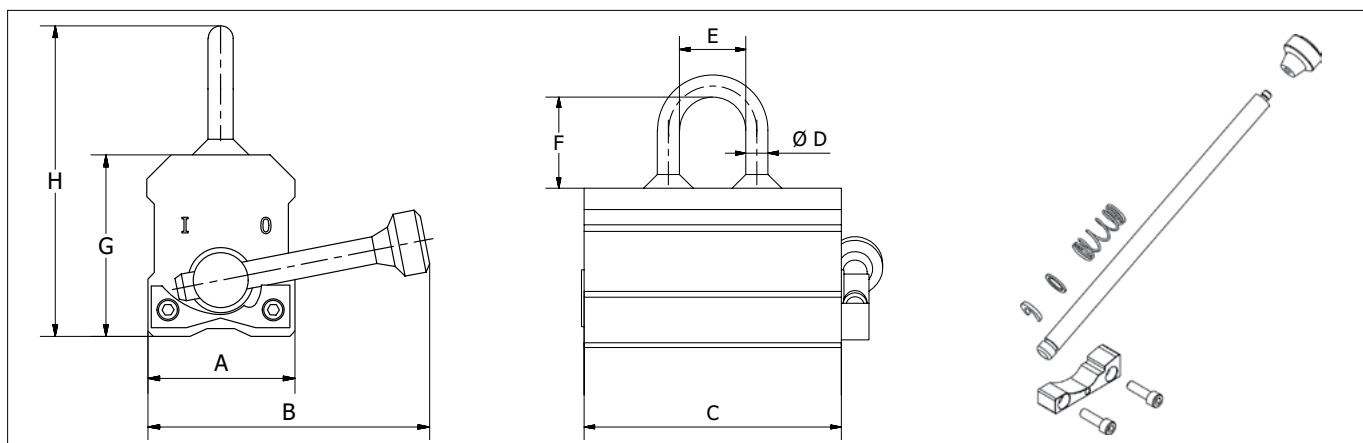


MAGNEX™



For horizontal lifting and transfer

- Solid steel construction with recessed area, reducing risk of damage to tags for identification and technical user information.
- Fully welded construction, minimizing maintenance costs.
- Innovative and patented easy switch stop block, equipped with ball bearing and ergonomic handle for increased safety and ease of use.
- Individually proof tested to 3 times the working load limit with certification.
- Each product is individually serialized, with the serial number and proof load test date stamped on body.
- User manual with test certificate included with each magnet
- 5-year warranty on magnetic system.
- CE certified including test certificate in accordance with EN 13155.
- Maintenance replacement kits are available.
- Can be used on both flat and round steel surfaces.
- Temperature range +32 °F (0 °C) to +176 °F (+80 °C)



Crosby MAGNEX™ Lifting Magnet



Model	Working Load Limit (kg)*	Stock No.	Weight Each (kg)	Dimensions (mm)							
				Jaw A	B	C	D	E	F	G	H
MAGNEX150	150	2708023	3.1	60	115	102	10	30	40	69	119
MAGNEX300	300	2708024	10.9	100	210	152	14	50	65	99	178
MAGNEX600	600	2708025	21.7	120	245	246	20	64	65	99	184
MAGNEX1000	1000	2708026	40.9	146	329	306	20	64	92	125	237
MAGNEX1500	1500	2708027	71.7	165	392	374	20	64	92	161	273
MAGNEX2000	2000	2708028	91.4	165	475	478	20	64	92	161	273

Model	Flat Material			Round Material			Handle Kit Stock No.
	Working Load Limit (kg)*	min. thickness for max. WLL (mm)*	min. load thickness (in) Each (lb)	Working Load Limit (kg)*	min. Ø (mm)	max. Ø (mm)	
MAGNEX150	150	25	2	75	50	100	2718001
MAGNEX300	300	30	4	150	60	200	2718002
MAGNEX600	600	40	6	300	65	270	2718003
MAGNEX1000	1000	60	10	500	100	300	2718004
MAGNEX1500	1500	80	15	750	150	350	2718005
MAGNEX2000	2000	80	15	1000	150	350	2718006

*WLL based on low carbon, mild steel and a working temperature 20°C

IPBK10



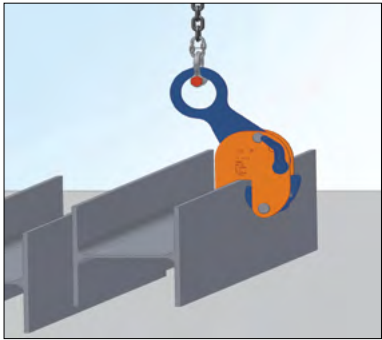
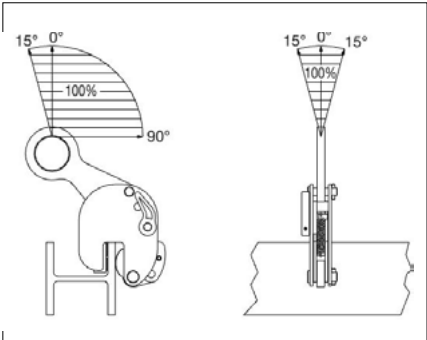
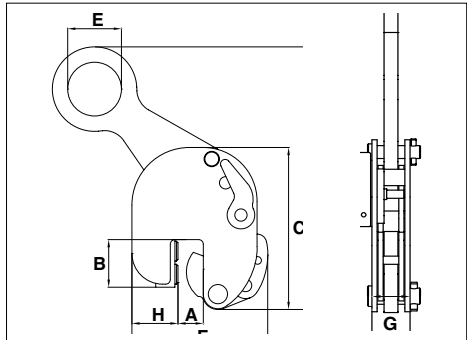
For the transfer and stacking of steel beams

- Available in capacities of 0.5 through 4 metric tons.
- Jaw openings available: 5 to 28mm.
- Welded alloy steel body for strength and smaller size. Forged alloy components, where required.
- Individually Proof Tested to 2 times the Working Load Limit with certification.
- Crosby IP, Working Load Limit and jaw opening permanently stamped on body.
- Each product is individually serialized, with the serial number and Proof Load test date stamped on body. User manual with test certificate is included with each clamp.
- Minimum WLL of 10% of Maximum WLL.
- For use with materials with a plate surface hardness to 279HV10, only 5% of minimum WLL is needed.
- Maintenance and repair kits are available.
- Temperature range -40 °F (-40 °C) to +212 °F (+100 °C)

Model IPBK10

Model	Working Load Limit (t)*	Stock No.	Weight Each (kg)	Dimensions (mm)									Maintenance Kit Stock No.
				Jaw A	B	C	D	E	F	G	H	J	
IPBK10	0.5	2703931	2.4	May-15	43	134	216	45	120	48	45	10	2715261
IPBK10	1	2703837	2.6	May-15	43	152	230	45	123	47	45	10	2729234
IPBK10	2	2703838	7.3	May-25	62	223	341	70	198	61	70	16	2729238
IPBK10	4	2703839	16.9	May-28	75	282	431	100	232	78	72	20	2729243

Design Factor based on EN 13155 and ASME B30.20.



IPBHZ



For the lifting and transfer of steel beams

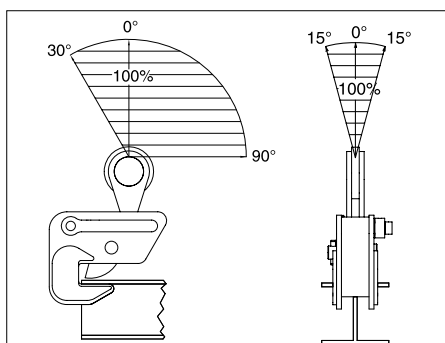
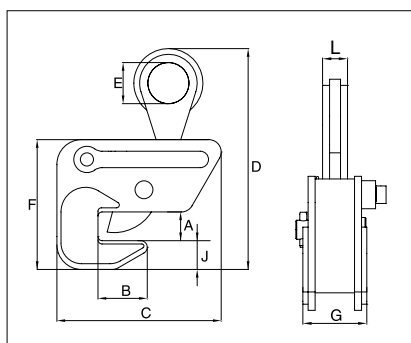
- Available in capacities of .75 through 12 metric tons (higher Working Load Limits are available upon request).
- Wide variety of jaw openings available: 0 to 40mm.
- Welded alloy steel body for strength and smaller size. Forged alloy components, where required.
- Individually Proof Tested to 2 times the Working Load Limit with certification.
- Crosby IP, Working Load Limit and jaw opening permanently stamped on body.
- Each product is individually serialized, with the serial number and Proof Load test date stamped on body. User manual with test certificate is included with each clamp.
- Maintenance and repair kits are available.
- Temperature range -40 °F (-40 °C) to +212 °F (+100 °C)

Model IPBHZ



Model	Working Load Limit (t)*	Stock No.	Weight Each (kg)	Dimensions (mm)								
				Jaw A	B	C	D	E	F	G	J	L
IPBHZ	0.75	2705461	3.0	0 - 25	40	148	220	50	130	69	33	22
IPBHZ	1.5	2705462	6.0	0 - 25	60	203	255	50	158	73	35	28
IPBHZ	3	2705463	10.5	0 - 40	80	227	325	70	188	112	38	32
IPBHZ	4.5	2705464	25.0	0 - 40	112	284	413	70	251	116	80	40
IPBHZ	12	2705467	42.3	0 - 40	125	466	490	90	317	90	90	47

* Design Factor based on EN 13155 and ASME B30.20.



IPTK



IPTKW

For transferring steel beams and attaching tackle eye

- Available in capacities of 2 through 25 metric tons (higher Working Load Limits are available upon request).
- Wide variety of jaw openings available: 75 to 1020mm.
- Welded alloy steel body for strength and smaller size. Forged alloy components, where required.
- Individually Proof Tested to 2 times the Working Load Limit with certification.
- Crosby IP, Working Load Limit and jaw opening permanently stamped on body.
- Each product is individually serialized, with the serial number and Proof Load test date stamped on body. User manual with test certificate is included with each clamp.
- Maintenance and repair kits are available.
- Temperature range -40 °F (-40 °C) to +212 °F (+100 °C)

IPTKU



IPTKUD

IPTK: with hoisting eye / IPTK(W): without hoisting eye

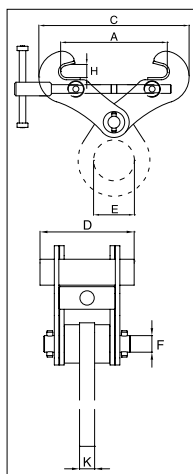
IPTKU: with hinged hoisting eye / IPTKU(D): with double locking device



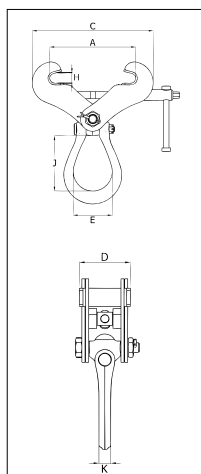
CE Load Rated

Model	Working Load Limit (t)*	Stock No.	Weight Each (kg)	Dimensions (mm)							
				Jaw A	C	D	E	G	H	J	K
IPTK	2	2700996	6.0	75 - 190	A + 80	125	75	-	25	-	20
IPTK	3	2700997	6.5	75 - 190	A + 80	125	75	-	25	-	20
IPTK	4	2700998	8.5	150 - 280	A + 100	125	75	-	35	-	20
IPTK	5	2700994	11.0	120 - 350	A + 195	125	75	-	40	-	20
IPTK	25	2702999	225.0	450 - 1020	A + 220	500	125	-	76	-	45
Without Hoisting Eye											
IPTKW	2	2700966	4.0	75 - 190	A + 80	125	-	28	25	-	-
IPTKW	3	2700967	4.5	75 - 190	A + 80	125	-	28	25	-	-
IPTKW	4	2700968	6.3	150 - 280	A + 100	125	-	33	35	-	-
IPTKW	5	2700969	8.8	120 - 350	A + 195	125	-	33	40	-	-
With Improved Hinged Hoisting Eye											
IPTKU	2	2707996	5.7	75 - 190	A + 100	121	76	-	22	99	19
IPTKU	3	2707997	6.4	75 - 190	A + 100	121	89	-	22	122	22
IPTKU	4	2707998	12.1	120 - 280	A + 150	140	89	-	40	122	22
IPTKU	5	2707994	14.5	120 - 350	A + 175	140	89	-	40	122	22
IPTKU	10	2707970	41.0	200 - 460	A + 300	200	105	-	60	152	26
With Double Locking Device											
IPTKUD	2	2709996	6.0	75 - 190	A + 100	165	76	-	22	99	19
IPTKUD	3	2709993	6.6	75 - 190	A + 100	165	89	-	22	122	22
IPTKUD	4	2709995	12.3	120 - 280	A + 150	185	89	-	40	122	22
IPTKUD	5	2709994	15.3	120 - 350	A + 175	185	89	-	40	122	22
IPTKUD	10	2709970	43.0	200 - 460	A + 300	215	105	-	60	152	26

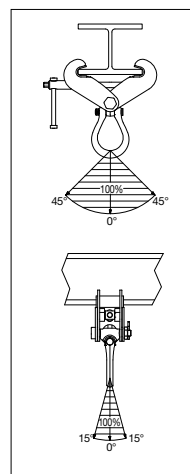
* Design Factor based on EN 13155 and ASME B30.20.



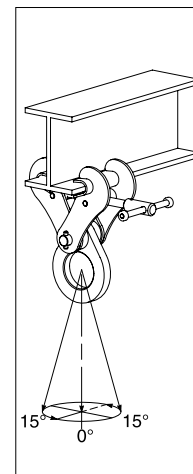
IPTK/IPTKW



IPTKU(D)(M)



IPTKU(D)



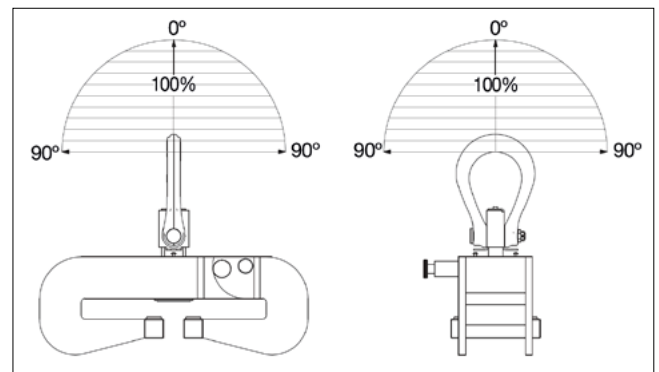
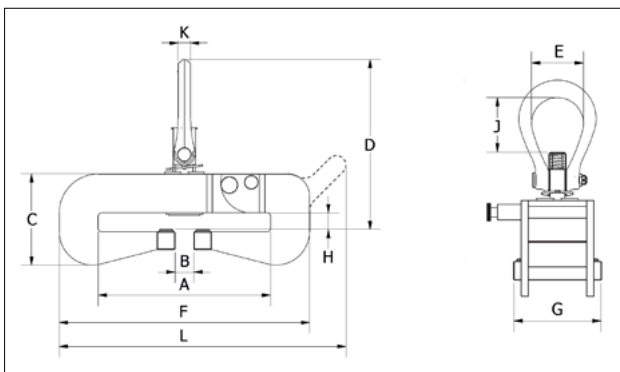
IPTK(W)

IPTKA



Universal beam clamp, maintains full rated capacity in all directions, at angles up to 90°

- Bail swivels 360° and pivots 180°.
- Easy to close and open with a hinged body with self-locking device.
- Easy to handle with handgrips.
- No interference or space limitations when tightening the clamp.
- Multi-purpose hoisting eye to be used for tightening as well as for hoisting.
- Maintenance and repair kits are available.
- Can be used for a wide range of profile sizes.
- Individually Proof Tested to 2 times the Working Load Limit with certification.
- Crosby IP, Working Load Limit and jaw opening permanently stamped on body.
- Temperature range -40 °F (-40 °C) to +212 °F (+100 °C)



Model IPTKA



Model	Working Load Limit (t)*	Stock No.	Weight Each (kg)	Dimensions (mm)											Maintenance Kit Stock No.
				Jaw A	B	C	D	E	F	G	H	J	K	L	
IPTKA	1	2707101	6.1	90 - 180	34	109	188	33	264	100	6-26	43	13	-	2715477
IPTKA	3	2707111	15.9	100 - 205	34	149	307	89	310	130	6-26	94	22	369	2729495
IPTKA	3	2707116	14.2	70 - 125	24	134	297	89	257	130	6-26	94	22	315	2729495
IPTKA	3	2707117	16.0	100 - 205	54	164	322	89	310	130	20-40	94	22	369	2729495
IPTKA	5	2707065	23.3	100 - 305	34	164	306	89	450	150	6-26	94	22	-	2729496
IPTKA	5	2707114	16.9	70 - 125	24	139	296	89	297	150	6-26	94	22	336	2729496
IPTKA	5	2707115	23.2	130 - 305	74	179	321	89	450	150	20-40	94	22	-	2729496
IPTKA	10	2707118	62.0	140 - 405	74	234	450	121	600	220	12-42	152	30	-	2729563
IPTKA	15	2707124	71.0	140 - 405	74	244	450	121	630	220	12-42	152	30	-	2729563

*Design Factor based on EN 13155 and ASME B30.20.



IPBCNS



For the lifting and transfer of wide flange beam sections and plate girders

- When lifting, these beam clamps grip the beam at three points, and when properly balanced and safely guided, the beam can be handled even if the clamp is slightly off center lengthwise.
- Capacities: 13.5 through 32 metric tons (higher Working Load Limits are available upon request).
- Eliminates the need for slings, chokers, and spreader bars.
- When applied to load, the tongs automatically open and slide under the flange of the beam.
- Center plate and gripping tongs work together - the heavier the beam, the greater the clamping pressure.
- Base is recessed to accept studs welded to the beam surface.
- Welded alloy steel body for strength and smaller size. Forged alloy components, where required.
- Individually Proof Tested to 2 times the Working Load Limit with certification.
- Crosby IP, Working Load Limit and jaw opening permanently stamped on body.
- Each product is individually serialized, with the serial number and Proof Load test date stamped on body. User manual with test certificate is included with each clamp.
- Maintenance and repair kits are available.
- Temperature range -40 °F (-40 °C) to +212 °F (+100 °C)

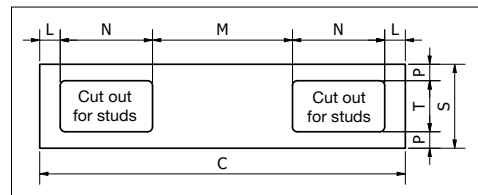
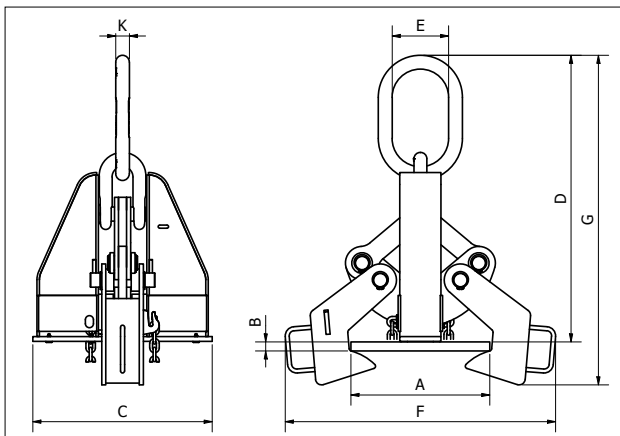
Model IPBCNS



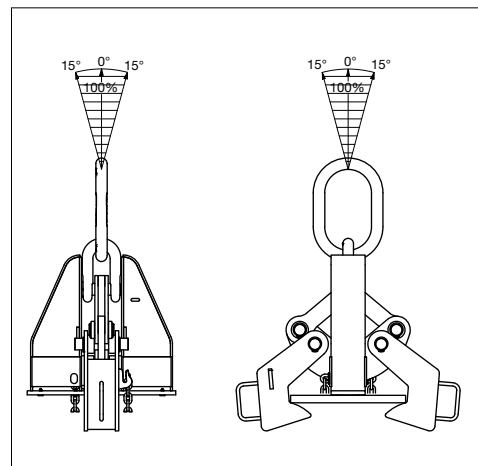
Model	Working Load Limit (t)*	Stock No.	Weight Each (kg)	Flange Grip Range (mm)		Dimensions (mm)						Maintenance Kit Stock No.
				Width A	Thickness B	C	D	E	F	G	K	
IPBCNS	13.5	2702018	62	178 - 432	13 - 51	444	775 - 592	140	505 - 749	894 - 719	34	2729610
IPBCNS	22.5	2702036	132	406 - 610	25 - 76	596	1012 - 812	152	775 - 969	1140 - 982	44	2729610
IPBCNS	32	2702054	240	406 - 914	41 - 102	730	1189 - 1023	178	792 - 1348	1458 - 1258	51	2729610

*Design factor based on EN 13155 and ASME B30.20.

NOTE: Control the beam at all times. Beams should be gripped as near the center as possible. Snubbing lines at each end must be used to control excessive twisting or swinging, and to guide the beam to its proper place. Each lifting situation may have a specific demand which should be addressed before lifting.



Base Stock No.	Base Dimensions (mm)						
	C	L	M	N	P	S	T
2702018	444	25	170	112	20	102	62
2702036	596	33	190	170	30	152	92
2702054	730	49	226	203	30	152	92

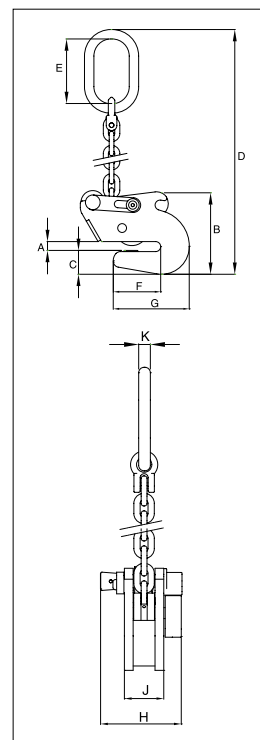


IPSTARTEC11

For lifting, transferring and controlled tilting of steel beams



- Available in capacities of 1.5 and 2.5 metric tons.
- Jaw openings available: 6 to 20mm.
- Welded alloy steel body for strength and smaller size. Forged alloy, components where required.
- Equipped with handle for easy placement.
- Individually Proof Tested to 2 times the Working Load Limit with certification.
- Crosby IP, Working Load Limit and jaw opening permanently stamped on body.
- Each product is individually serialized, with the serial number and Proof Load test date stamped on body. User manual with test certificate is included with each clamp.
- Maintenance replacement parts are available.
- Temperature range -40 °F (-40 °C) to +212 °F (+100 °C)

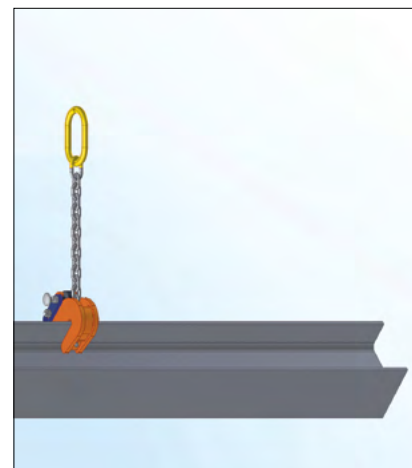
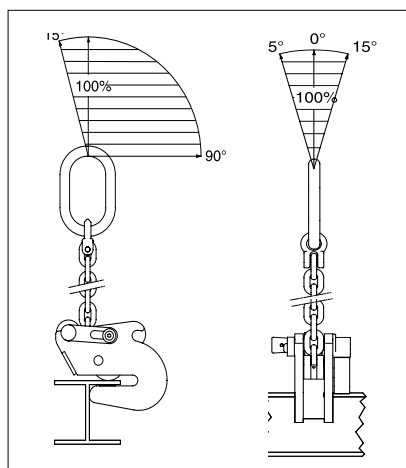


Model IPSTARTEC11

CE Load Rated

Model	Working Load Limit (t)*	Stock No.	Weight Each (kg)	Dimensions (mm)										Maintenance Kit Stock No.
				Jaw A	B	C	D	E	F	G	H	J	K	
IPSTARTEC11	1.5	2701812	6.6	6-12	140	39	575	110	81	129	126	54	16	2715494
IPSTARTEC11	2.5	2701822	14.5	6-20	210	55	725	135	115	182	140	74	18	2715495

*Design Factor based on EN 13155 and ASME B30.20.



IPSC10



Suitable for use in positioning & turning steel plates and sections. Not to be used as a lifting clamp

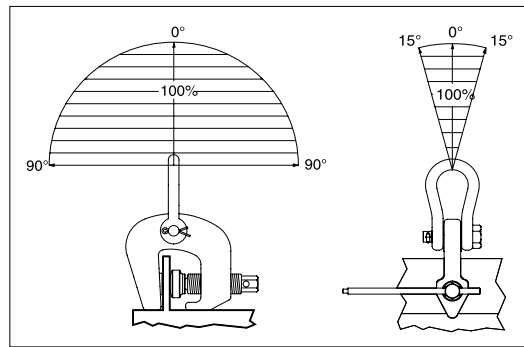
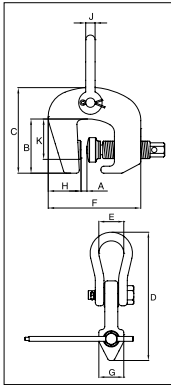
- Available in capacities of 1.5 and 3 metric tons.
- Jaw openings available: 0" to 60mm.
- Suitable for steel with a surface hardness up to 30 Rc.
- Forged alloy steel body for strength and smaller size. Forged alloy components, where required.
- Individually Proof Tested to 2 times the Working Load Limit with certification.
- Crosby IP, Working Load Limit and jaw opening permanently stamped on body.
- Each product is individually serialized, with the serial number and Proof Load test date stamped on body. User manual with test certificate is included with each clamp.
- Manufactured by an ISO 9001 facility.
- Temperature range -40 °F (-40 °C) to +212 °F (+100 °C)

Model IPSC10



Model	Working Load Limit (t)*	Stock No.	Weight Each (kg)	Dimensions (mm)										Maintenance Kit Stock No.
				Jaw A	B	C	D	E	F	G	H	J	K	
IPSC10	1.5	2703857	4.6	0 - 40	91	143	251	44	156	50	45	16	65	2715492
IPSC10	3	2703858	8.4	0 - 60	109	175	310	51	200	62	55	19	83	2715493

*Design Factor based on EN 13155 and ASME B30.20.

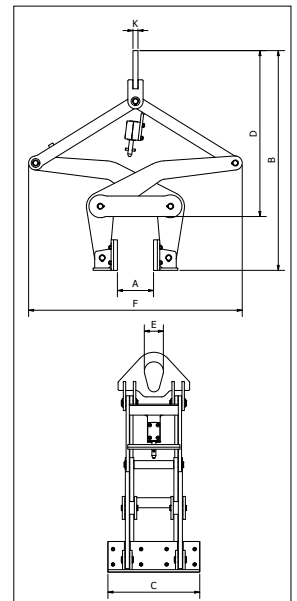


IPBG



The Crosby IP Barrier Grab provides a fast and efficient method for handling road barriers.

- Hands-free operation.
- Welded alloy steel construction for strength and smaller size.
- Comes equipped with polyurethane pads. (Replacement kits are available.)
- Individually Proof Tested to 2 times the Working Load Limit with certification.
- Crosby IP, Working Load Limit and jaw opening permanently stamped on body.
- Each product is individually serialized, with the serial number and Proof Load test date stamped on body. User manual with test certificate is included with each clamp.
- Temperature range -4 °F (-20 °C) to +158 °F (+70 °C)



Model IPBG

Model	Working Load Limit (t)*	Stock No.	Weight Each (kg)	Dimensions (mm)							Maintenance Kit Stock No.
				Jaw A	B	C	D	E	F	K	
IPBG	4	2704018	156.0	152 - 305	1149 - 861	457	882 - 598	95	1038 - 1128	25	2729615

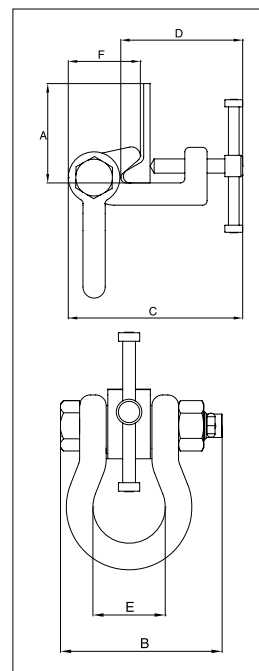
*Design factor based on EN13155 and ASME B30.20.

IPBTO10



For use as a temporary tackle eye in spaces that have been reinforced with HP (bulb) profiles such as engine rooms and shipsections

- Available in capacities of 1.5 through 6 metric tons (higher Working Load Limits are available upon request).
- Wide variety of jaw openings available: HP 160mm to HP 430mm.
- Alloy steel body for strength and smaller size. Forged alloy components, where required.
- Individually Proof Tested to 2 times the Working Load Limit with certification.
- Crosby IP, Working Load Limit and jaw opening permanently stamped on body.
- Each product is individually serialized, with the serial number and Proof Load test date stamped on body. User manual with test certificate is included with each clamp.
- Maintenance and repair kits are available.
- Temperature range -40 °F (-40 °C) to +212 °F (+100 °C)

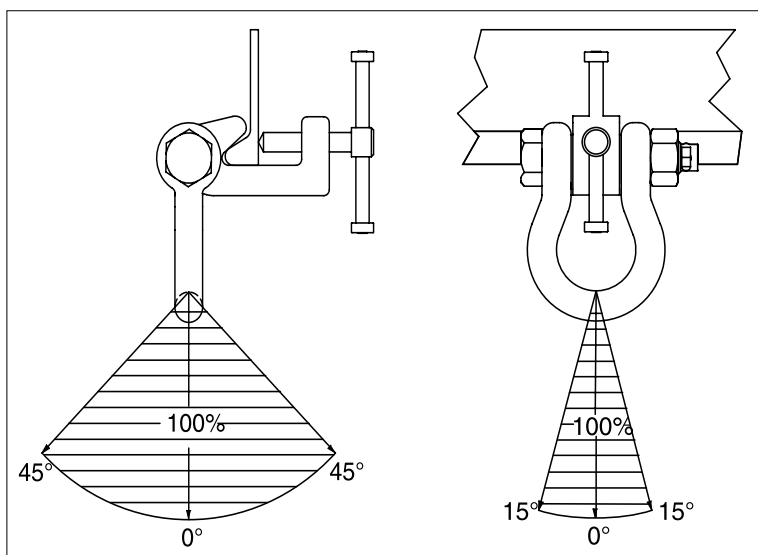


Model IPBTO10



Model	Working Load Limit (t)*	Stock No.	Weight Each (kg)	Dimensions (mm)					
				Profile A †	B	C	D	E	F
IPBTO10	1.5	2700980	4.3	HP 160-240	137	188-209	129-150	68	81
IPBTO10	3	2700986	6.0	HP 240-320	137	188-217	145-174	68	78
IPBTO10	6	2700991	13.0	HP 300-430	185	255-297	195-236	82	102

*Design Factor based on EN 13155 and ASME B30.20. †Profile A is the type of Holland Bulb (HP) style and size material.

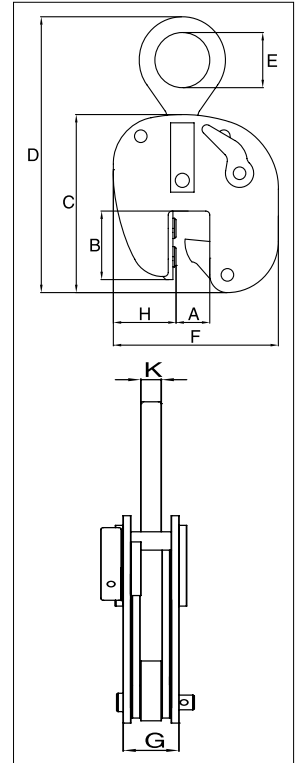




IPBUUZ

For lifting, transferring and placing bulb profiles onto ship's hulls perpendicularly

- Available in capacities of .75 through 3.75 metric tons (higher Working Load Limits are available upon request).
- Jaw openings available: HP 120mm to HP 430mm.
- Welded alloy steel body for strength and smaller size. Forged alloy components, where required.
- Individually Proof Tested to 2 times the Working Load Limit with certification.
- Crosby IP, Working Load Limit and jaw opening permanently stamped on body.
- Each product is individually serialized, with the serial number and Proof Load test date stamped on body. User manual with test certificate is included with each clamp.
- Minimum WLL of 10% of maximum WLL.
- Maintenance and repair kits are available.
- Temperature range -40 °F (-40 °C) to +212 °F (+100 °C)



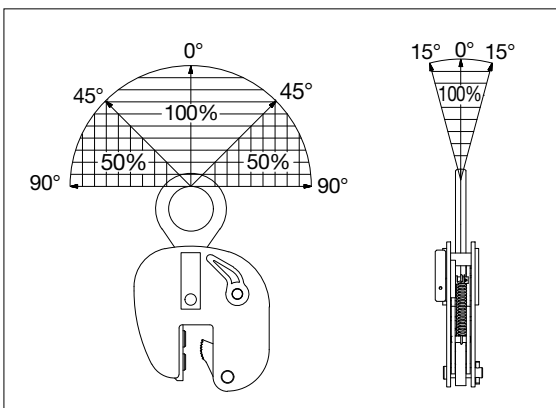
Model IPBUUZ: with Universal Hoisting Eye
Model IPBUZ: with Fixed Hoisting Eye



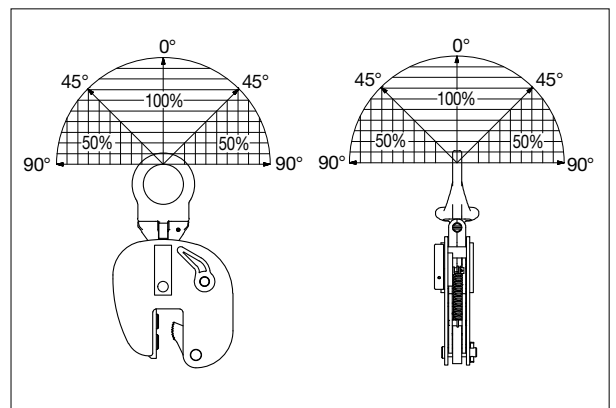
Model	Working Load Limit (t)*	Stock No.	Weight Each (kg)	Dimensions (mm)									Maintenance Kit Stock No.
				Profile A †	B	C	D	E	F	G	H	K	
IPBUUZ	0.75	2705601	7.4	HP 120-200	85	226	390	70	210	61	70	16	2715480
With fixed hoisting eye													
IPBUZ	0.75	2705600	6.2	HP 120-200	85	226	390	70	210	61	70	16	2715480
IPBUZ	1.5	2705701	15.0	HP 220-430	196	397	568	70	256	69	48	16	2715481
IPBUZ	3.75	2705702	29.2	HP 220-430	238	438	565	80	355	64	100	20	2715482

* Design Factor based on EN 13155 and ASME B30.20. † Profile A is the type of Holland Bulb (HP) style and size material.

IPBUZ



IPBUUZ

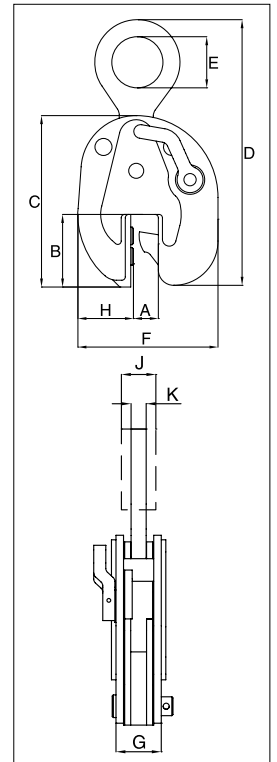


IPSBUUZ



For lifting, transferring and placing complete shipsections

- Available in capacities of 4.5 through 9 metric tons (higher Working Load Limits are available upon request).
- Wide variety of jaw openings available: HP 100mm to HP 430mm. Welded alloy steel body for strength and smaller size. Forged alloy components, where required.
- Individually Proof Tested to 2 times the Working Load Limit with certification.
- Crosby IP, Working Load Limit and jaw opening permanently stamped on body.
- Each product is individually serialized, with the serial number and Proof Load test date stamped on body. User manual with test certificate is included with each clamp.
- Minimum WLL of 10% of maximum WLL.
- Maintenance and repair kits are available.
- Temperature range -40 °F (-40 °C) to +212 °F (+100 °C)

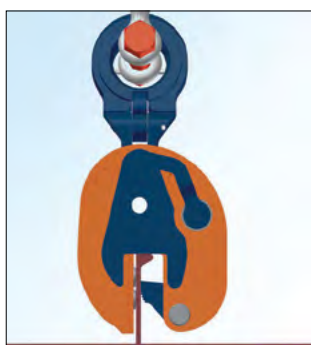
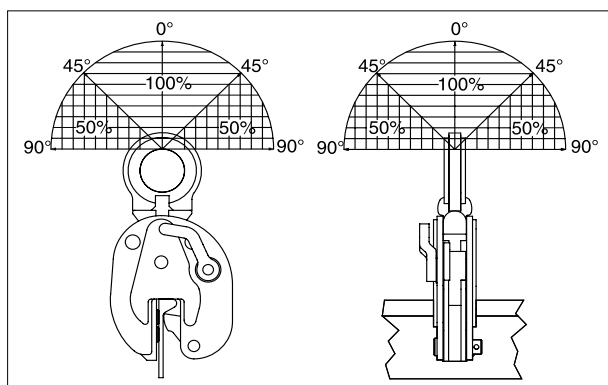


Model IPSBUUZ / IPSBUSUZ: With Universal Hoisting Eye



Model	Working Load Limit (t)*	Stock No.	Weight Each (kg)		Dimensions (mm)										Maintenance
				Profile A †	B	C	D	E	F	G	H	J	K	Kit Stock No.	
IPSBUUZ	4.5	2705771	15.5	HP 100-160	107	252	450	75	206	96	82	36	20	2715484	
IPSBUUZ	9	2705773	43.0	HP 100-160	105	274	491	80	248	123	104	44	20	2715485	
IPSBUSUZ	4.5	2705772	38.0	HP 180-430	227	428	635	75	377	95	128	-	20	2715486	
IPSBUSUZ	9	2705774	69.0	HP 180-430	227	478	718	80	425	118	155	44	25	2715487	

*Design Factor based on EN 13155 and ASME B30.20. † Profile A is the type of Holland Bulb (HP) style and size material.

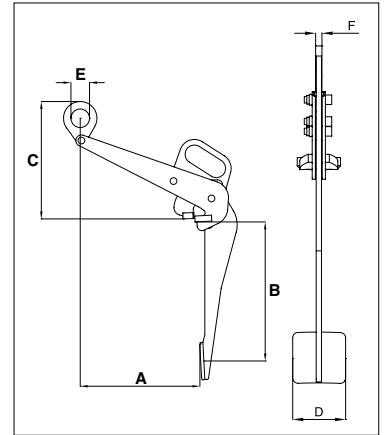


IPDV



Designed to lift, move and transfer 50-55 gallon drums with steel tops

- Available in capacity of .5 metric tons (higher Working Load Limits are available upon request).
- Jaw openings available: IPDV - 25mm and IPVK - 17mm.
- Welded alloy steel body for strength and smaller size. Forged alloy components, where required.
- Individually Proof Tested to 2 times the Working Load Limit with certification.
- Crosby IP, Working Load Limit and jaw opening permanently stamped on body.
- Each product is individually serialized, with the serial number and Proof Load test date stamped on body. User manual with test certificate is included with each clamp
- Maintenance and repair kits are available.
- Temperature range -40 °F (-40 °C) to +212 °F (+100 °C)

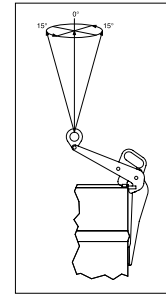


Model IPDV

CE Load Rated

Model	Working Load Limit (t)*	Stock No.	Weight Each (kg)	Dimensions (mm)					
				Jaw A	B	C	D	E	F
IPDV	0.5	2700118	7.1	300	375	290	100	50	12

*Design Factor based on EN 13155 and ASME B30.20.



IPVK

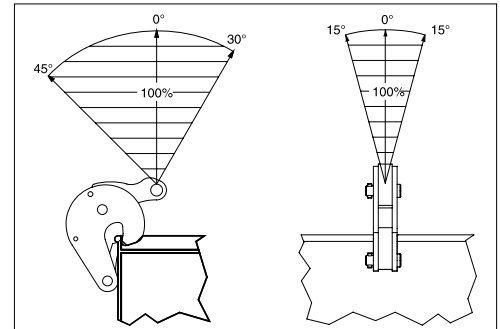
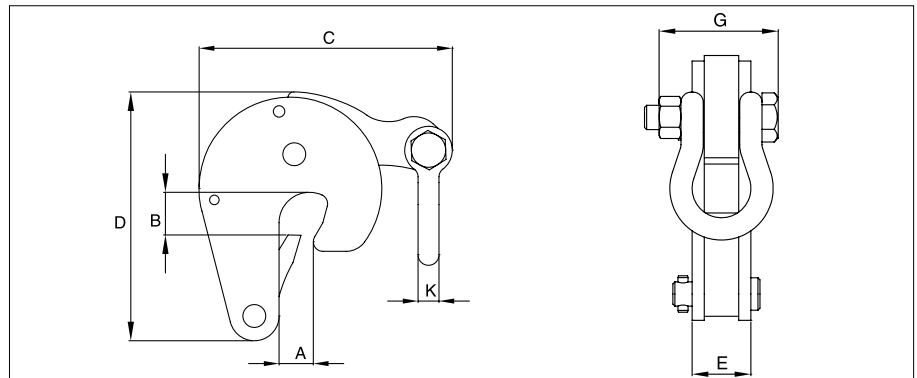


Model IPVK

CE Load Rated

Model	Working Load Limit (t)*	Stock No.	Weight Each (kg)	Dimensions (mm)						
				Jaw A	B	C	D	E	G	K
IPVK	0.5	2700116	1.6	0-17	26	135	132	29	51	11

*Design Factor based on EN 13155 and ASME B30.20.

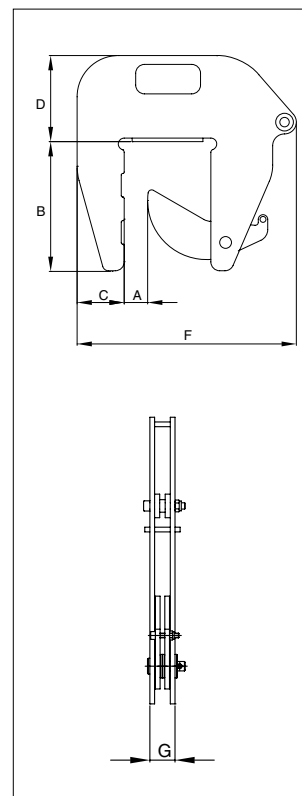


IPCC



For lifting and transferring concrete pipe sections and wells

- Available in capacity of 1 metric ton per pair.
- Jaw opening available: 40 - 140mm.
- Welded alloy steel body for strength and smaller size. Forged alloy, components where required.
- Equipped with handle for easy placement.
- Individually Proof Tested to 2 times the Working Load Limit with certification.
- Crosby IP, Working Load Limit and jaw opening permanently stamped on body.
- Each product is individually serialized, with the serial number and Proof Load test date stamped on body. User manual with test certificate is included with each clamp.
- Maintenance replacement parts are available.
- Temperature range -40 °F (-40 °C) to +212 °F (+100 °C)

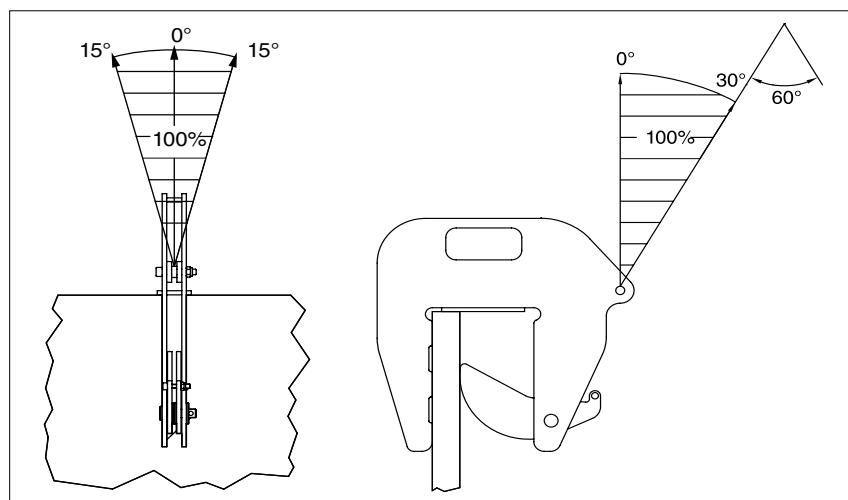


Model IPCC

CE Load Rated

Model	Working Load Limit per pair (t)*	Stock No.	Weight Each (kg)	Dimensions (mm)					
				Jaw A	B	C	D	F	G
IPCC	1	2700037	9.2	40-140	225	80	146	372	37

*Design Factor based on EN 13155 and ASME B30.20.





The IPU10 vertical lifting clamp is used for lifting, turning, moving or vertical transfer of sheet, plates, or fabrications from horizontal to vertical and down to horizontal (180°) as needed. The hinged hoisting eye allows for the clamp to place and lift the load from any direction, or with a multiple leg sling without side-loading the clamp.



The IPNM10N vertical lifting clamp is used for lifting, turning, moving or vertical transfer of sheet, plates, or fabrications from horizontal to vertical and down to horizontal (180°) as needed without marring the surface of the material. Materials such as aluminum, stainless steel, painted materials, aircraft skins, composite material, glass, plastic, etc., can be lifted without marring. Will not mar, or scratch the material surface.



The IPNM10P vertical lifting clamp is used for lifting, turning, moving or vertical transfer of sheet, plates, or fabrications from horizontal to vertical and down to horizontal (180°) as needed without marring the surface of the material. Materials such as aluminum, stainless steel, painted materials, aircraft skins, composite material, glass, plastic, etc., can be lifted without marring. The protective cover reduces the risk of damage to surrounding plates. Will not mar, or scratch the material surface.



The IPU10A automatically clicks onto the material as soon as the clamp is placed on the plate. The fact that the safety lock remains in position as the clamp closes precludes hazardous situations. Fastening the IPU10A clamp in places that are difficult to reach is no problem.



The IPHNM10 horizontal lifting clamps have a pretension feature that allows the user to attach the clamps to the material for horizontal lifting and transfer of non-sagging material. To be used where material surface must not be damaged. These clamps must be used in pairs or more.



The IPH10 horizontal lifting clamps with spring loaded tension have a pretension feature that allows the user to attach the clamps to the material for horizontal lifting and transfer of non-sagging material. These clamps must be used in pairs or more.



The IPHOZ horizontal lifting clamp is to be used for lifting and transferring, in the horizontal position, of thin sheet and other materials that will sag or bend when lifted. These clamps must be used in pairs or more.



The IPPE10 type clamp is suitable for lifting and transferring bundles of non-bendable sheets of metal in a horizontal position. The jaw opening can be easily adjusted for the height of the bundle or plate. The IPPE10 has magnets in the footplate. This allows one person to operate multiple clamps at the same time when lifting loads. These clamps must be used in pairs or more.



The IPPE10NM lifting clamps may be used for virtually all applications, where the objects that are to be lifted or transported require optimal protection against surface damage. This also applies to materials with a very smooth surface, composites, plates with a protective cover or hard surface plates. These clamps have to be used in pairs.



The IPBC horizontal lifting clamps have a pretension feature that allows the user to attach the clamps to the material for horizontal lifting and transfer of sagging and non-sagging material. These clamps may also be used to handle material that will be used in shears, bending and rolling machines or other fabrication equipment. May also be used for turning beams from the "H" into the "I" position.



The IPHGZ, IPHGUZ horizontal lifting clamps have a pretension locking feature that allows the user to attach the clamps to the material for horizontal lifting and transfer of sagging and non-sagging material. These clamps may also be used to handle material that will be used in shears, bending and rolling machines or other fabrication equipment. May also be used to move and lift structural shapes such as I-Beams, H-beams etc.



The IPBK10 beam clamp is used for lifting, transferring and stacking H-Beams. A ring-center hoist eye allows for the beam flange to remain vertical. This series of clamps can be used in vertical and horizontal moving, transferring and stacking of different types of structural designs, such as H-Beams, angles, etc, depending on the application desired.



The IPBHZ beam clamp is used for lifting, transferring and stacking I-Beams & H-Beams. An ring-center hoist eye allows for the beam flange to remain vertical. This series of clamps can be used in vertical and horizontal moving, transferring and stacking of different types of structural designs, such as H-Beams, angles, etc, depending on the application desired.



The IPTK & IPTKW series beam clamp is suitable for use as a temporary tackle eye for a beam.



The IPTKU beam clamp has an improved hinged hoisting eye that increases the loading angles and the IPTKUD adds a double locking device to this clamp.



The IPSTARTEC11 beam clamp has been specially developed for lifting with the body in vertical position, controlled tilting, transportation and stacking of steel "H" and "I" profiles. By placing the chain guide in the appropriate position, it is easy to switch from lifting to tilting and back again, which shifts the center of gravity.



The IPDV drum clamp is for vertical lift and transfer. Allows drum to remain in an upright position during the lift and transfer using one clamp.



The IPVK drum clamp is for vertical lift and transfer. Automatically locks on drum, and can be used alone or in pairs.



The IPCC is suitable for the vertical lifting and transfer of concrete pipe sections and wells. Very easy application and removal of the clamp thanks to the built-in carrying-grips. Normally used in combination with 7mm chain (not supplied). These clamps must be used in pairs or more.



The IPSC10 screw style clamp is for positioning, pulling and turning plates or fabrications.



The IPBTO10 shipbuilding clamp is used as a temporary tackle eye in spaces which have been reinforced with HP (bulb) profiles such as engine rooms and shipsections. This clamp is fitted with a screwed spindle for easy attachment of the clamp. The moment a load is applied, the clamp is automatically fixed.



The IPBUUZ shipbuilding clamps are used for lifting, transferring and placing bulb profiles onto ship's hulls perpendicularly. These clamps are fitted with a locking device for both open and closed positions, which ensures complete reliability. They are to be used exclusively for bulb profiles (not for plates).



The IPSBU(U)Z shipbuilding clamps are used for the lifting, transfer and placing of complete shipsections. These clamps are fitted with a locking device for both open and closed positions, which ensures complete reliability. They are to be used exclusively for bulb profiles (not for plates).



Kito Crosby is the global leader of the lifting and securement industry it pioneered, and for which it continues to set the quality standard. With global engineering, manufacturing, distribution, and operations, the company provides a broad range of products and solutions for the most demanding applications.

Kito Crosby's people, products, solutions, and services have innovated the lifting and securement industry for more than 260 years.

Together we lift and secure the world today, for a safer, stronger, and more productive tomorrow. Our iconic brands include Kito, Crosby, Harrington, Gunnebo Industries, and Peerless.

kitocrosby.com

