



Crosby®

Lifting Clamps & Magnets

IMPERIAL



Kito Crosby develops practical solutions for specific problems

Our mission is to be the innovative and quality leader in the field of lifting clamps by manufacturing products of uncompromising quality and providing tailored solutions for specific hoisting situations.

With the support of an enthusiastic and professional team—including our distributors and suppliers—we are fully committed to delivering high-quality branded products, excellent service, and dependable support. Our primary objective is to ensure the satisfaction of end-users.

Our facility is ISO 9001 – ANAB accredited, ensuring compliance with clearly defined standards.

Users of lifting clamps can be found in a variety of industries:

- Machine construction in a variety of industries
- Automotive industry
- Chemical industry
- Tank and vessel construction
- Aircraft industry
- Wind power energy
- Ship and yacht construction
- Offshore
- Land based industries
- Production and/or assembly of composite parts
- Production of steel constructions for buildings, bridges, etc.
- Pipe laying
- Road construction

High quality production methods

The production of Crosby IP Lifting Clamps utilizes high tech manufacturing techniques. Our welding robots, plasma cutting machine, CNC milling machines, in-house paint shop and modern assembly line are fully designed to deliver a consistent high quality product with:

- Improved markings
- Lower weight
- More reliable body construction
- Tougher camsegments

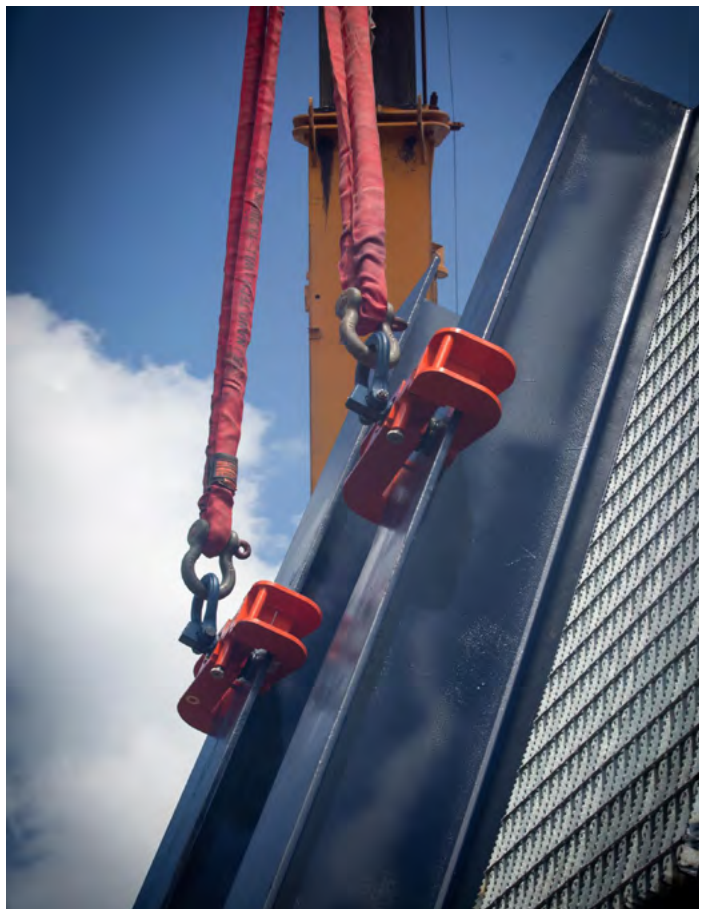
Points of recognition

Always use the right clamp for the right application. The brand name (Crosby IP), WLL, jaw opening and Proof Load test date are permanently stamped on the body. Each product is provided with a unique serial number that is stamped on the body and included on the test certificate.

Maximum reliability

Our R&D department is responsible for a complete product line that can be counted on to provide the strength you need. A Crosby IP clamp distinguishes itself from competition on different areas. The welded alloy steel body is designed for strength, and results in a clamp that is lighter and more compact. Where needed, the clamp is equipped with forged-alloy components.

The clamps are user friendly and contain many small features that enable them to withstand the heavy work conditions to which they are exposed.



Crosby IP clamps are 100% individually proof tested to 2 times the Working Load Limit. In addition, each clamp is RFID equipped, allowing for ease of inspection.

Innovative

Our innovations provide you effective solutions for your material handling applications. A way to save you time and money.

If our standard product range may not meet the clients specific needs, Kito Crosby can offer an extensive range of specials. For example, products that provide a suitable solution to a complex lifting challenge.

10 years guarantee

Maximum reliability. An attribute, which Kito Crosby commits to through the 10 year guarantee, available on all standard Crosby IP Lifting Clamps. This guarantee is linked to regular maintenance and the use of original parts.

Periodic inspections, preventive maintenance service and one or, when necessary, two overhaul services are the only conditions to preserve the 10 years guarantee.

The inspections shall be carried out by a qualified officer authorized by the Inspection Service Provider. The maintenance and overhaul services shall be carried out by a Kito Crosby accredited dealer.

Inspection, Repair & Spare parts

At Kito Crosby we recognize that quality and safety are never to be compromised. These values are at the core of our business.

Through our vast network of authorized and certified Inspection, Maintenance and Repair partners, Crosby offers local support to make sure your clamp can be used safely and properly, without the need to completely replace a worn out clamp.

Our authorized distributors stock maintenance kits and spare parts to ensure fast turn-around of the clamp.

Repair training: Designed for inspection and periodic maintenance of Crosby IP clamps. After successfully completing the hands-on repair training, service engineers will be awarded a certificate, valid for 4 years, qualifying them to perform periodic maintenance and repair services.

Industry Education & Technical Support

Kito Crosby provides practical and reliable solutions for specific lifting situations. Our team of specialized sales managers and product trainers is available globally. Kito Crosby has an intensive relationship with a carefully selected network of local authorized distributors who can provide you with professional advice regarding your specific lifting situation.

Specifically for the end-users of Crosby IP lifting clamps, we offer training, focused on the correct and safe use of the product. This ensures usage of the right clamp and in the proper manner, always.

The Lifting Clamp Application Assistant

The Lifting Clamp Application Assistant, located on the Kito Crosby website, is the perfect tool to find the right clamp for any particular lifting situation.

Depending on whether you would like to lift vertically, horizontally or if the choice for a clamp is based on the object to be lifted (drums, profiles, bulb profiles, pipe sections, etc.): the Clamp Assistant will guide you towards the right clamp for the job.

Scan the QR code for a direct link to our Clamp Assistant

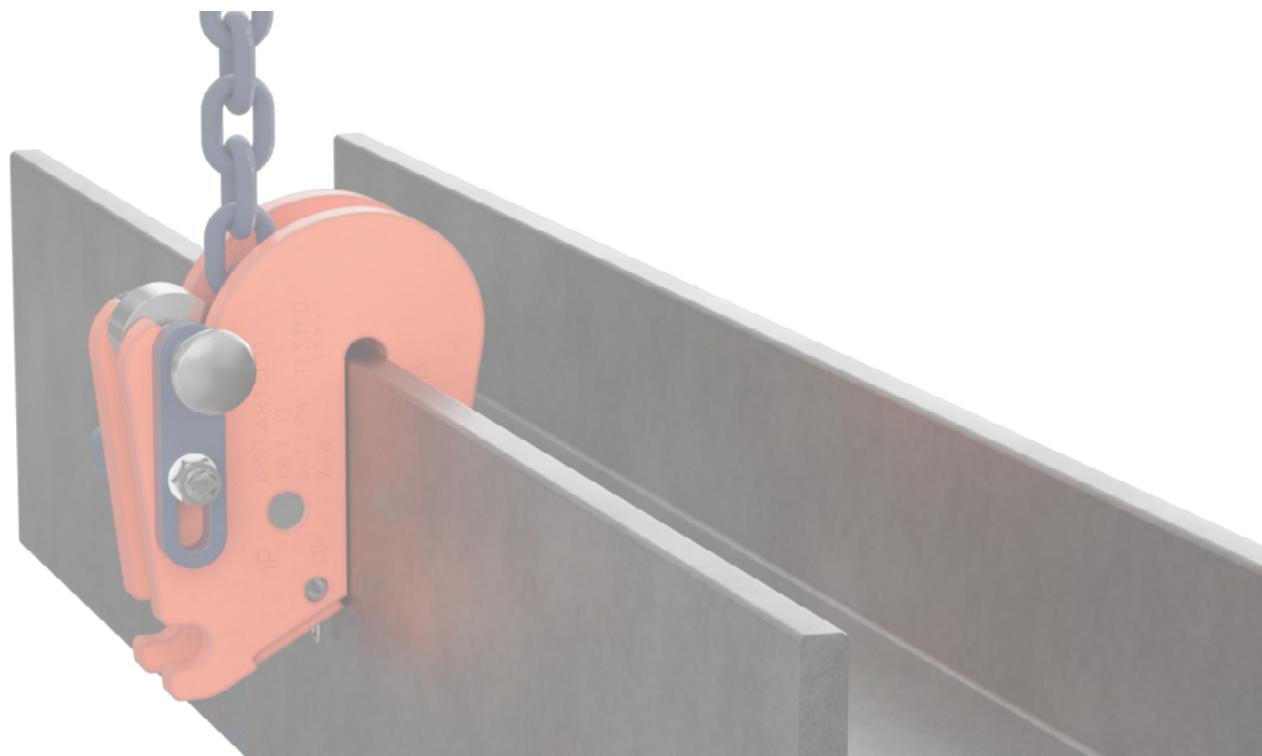




INDEX

Kito Crosby designs and manufactures practical solutions tailored to specific lifting challenges. Our lifting clamps are utilized across a wide range of applications and industries.

Model	VERTICAL TRANSPORT	
IPU10	Universal model	6-7
IP10	Basic model	8
IPNM10	Non-marring	9
IPU10A	Automatically locking	10
	HORIZONTAL TRANSPORT	
IPHNM10	Non-marring, with pretension	11
IPH10	Non-sagging, with magnets and pretension	11
IPH10E	Non-sagging, basic model	12
IPHOZ	Sagging plates	13
IPPE10	Bundles of plates	14
IPPE10NM	Bundles of plates, non-marring	14
IPBC	With pretension	15
IPHGZ – IPHGUZ	With locking device	15
IPPH – IPPHI	Pipe hook, nylon insert	16
MAGNEX	Lifting magnet	17
	HORIZONTAL TRANSPORT OF BEAMS	
IPBK10	Transfer and stacking H-position	18
IPBHZ	Transfer and stacking I-position	19
IPTK – IPTKW – IPTKU – IPTKUD	Transfer beams and attach tackle eye	20
IPTKA	Transfer beams in all directions	21
IPBCNS	Transfer wide flange beams and plate girders	22
IPSTARTEC11	Controlled tilting of beams	23
	MISCELLANEOUS	
IPSC10	Positioning and pulling	24
IPBG	Transfer road barriers	24
IPBTO10	Temporary tackle eye	25
IPBUUZ – IPBUZ	Bulb profiles	26
IPSBUEZ	Ship sections	27
IPDV – IPVK	Handling of drums	28
IPCC	Transfer concrete pipe sections and wells	29



IPU10 Lifting Clamp

Maximum Reliability

For over 50 years, Crosby IP lifting clamps have proven their reliability in markets around the world. A Crosby IP clamp differs from the competition in a number of ways. The welded alloy steel body, designed for strength and resulting in a lighter, more compact clamp, is just one example of how advanced these clamps are.

Lifting Eye

Available with straight (IP10) or swiveling eye (IPU10), allowing sideloading
Alloy steel, quenched and tempered



Clear Markings

- Manufacturer
- Model, min. & max. WLL
- Jaw opening in mm & inch
- Serial number
- CE marking

Welded Body

Alloy steel body, combines strength with low weight, made possible by high-strength steel and carefully considered details such as location of welds.

Camsegment

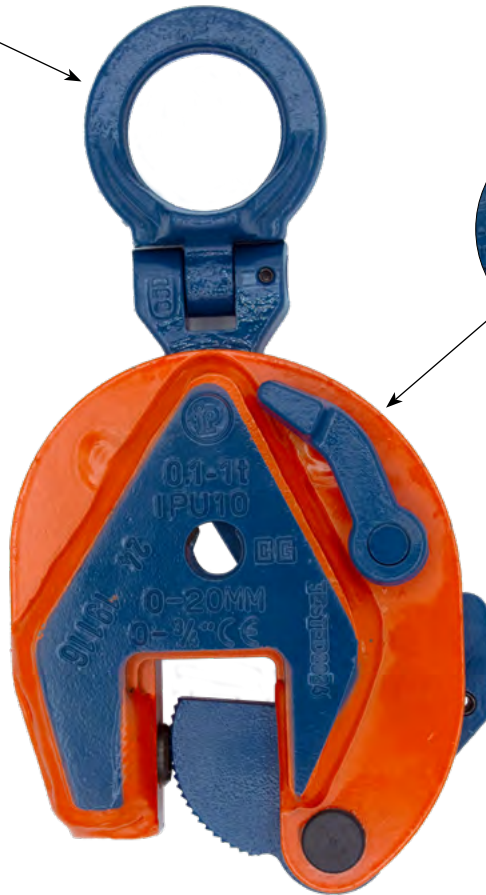
Different camsegment options available:

Easy to use Latch

- Locked open and locked closed position
- When closed, pretension is applied on the material
- When closed, no protruding lever outside the body

Replacement Parts

Quick and easy assembly
Maintenance and Repair Kits available, to ensure a quick and correct repair.
Single parts available



Standard, for materials with surface hardness to 363 HV10 (345 HB)



Stainless steel, with surface hardness to 363 HV10 (345 HB)



Harder materials, with surface hardness to 472 HV10 (450 HB)

IPU10



- Universal - for lifting in any direction.
- Available in capacities of .5 thru 30 metric tons (higher Working Load Limits are available upon request).
- Wide variety of jaw openings available: 0 to 6.13".
- Welded alloy steel body for strength and smaller size. Forged alloy components, where required.
- Individually Proof Tested to 2 times the Working Load Limit with certification.
- Crosby IP logo, Working Load Limit and jaw opening permanently stamped on body.
- Each product is individually serialized, with the serial number and Proof Load test date stamped on body. User manual with test certificate is included with each clamp.
- Available in a variety of styles:
 - IPU10 - Standard clamp for materials with a surface hardness to 363HV10 (345 HB).
 - IPU10J - Larger jaw opening.
 - IPU10S - For use with stainless steel material.
 - IPU10H - For use with materials with a surface hardness to 472HV10 (450 HB).
- Full 180° turning range for material transfer, turning or moving.
- Lock open, lock closed ability with latch for pretension on material and then release of material.
- Maintenance and repair kits are available.
- Minimum WLL is 5% of maximum WLL for .5t IPU10 only.
- Minimum WLL is 10% of maximum WLL for all other IPU10, IPU10J, IPU10S, IPU10H clamps.
- For use with materials with a surface hardness to 279HV10, only 5% of minimum WLL is needed.
- Temperature range -40 °C (-40 °F) to +100 °C (+212 °F)

IPU10S

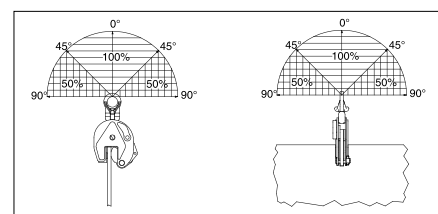
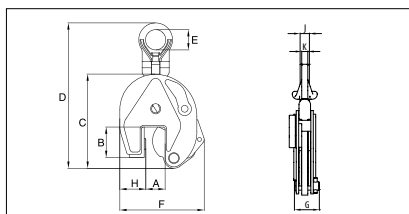


Model IPU10 / IPU10J / IPU10S / IPU10H



Model	Working Load Limit (t)*	Stock No.	Weight Each (lb)	Dimensions (in)											Maintenance Kit Stock No.
				Jaw A	B	C	D	E	F	G	H	J	K		
IPU10	0.5	2701675	4.2	0 - 0.63	1.73	5.12	8.50	1.57	4.53	1.65	1.10	-	0.43	2715054	
IPU10	1	2701663	5.3	0 - 0.75	1.77	5.47	8.86	1.57	5.00	1.65	1.50	-	0.43	2715009	
IPU10	2	2701677	18.3	0 - 1.38	3.07	7.91	14.49	2.76	7.40	2.52	2.17	-	0.63	2715063	
IPU10	3	2701665	32.6	0 - 1.56	3.94	9.96	17.17	2.95	8.74	3.07	2.36	-	0.79	2715018	
IPU10	4.5	2701667	35.3	0 - 1.56	3.94	9.96	17.17	2.95	8.94	3.23	2.56	-	0.79	2715018	
IPU10	6	2701669	52.9	0 - 2.00	4.96	11.89	20.67	3.15	11.50	3.31	3.74	1.73	0.79	2715036	
IPU10	9	2701671	65.0	0 - 2.00	4.96	12.80	21.73	3.15	12.20	3.70	4.09	1.73	0.79	2715288	
IPU10	12	2701679	126.0	0 - 2.13	6.30	15.43	24.25	3.15	17.05	4.76	5.39	1.61	0.98	2715102	
IPU10	16	2701683	174.0	0.2 - 2.50	7.09	18.23	28.98	3.46	19.37	4.76	6.02	1.77	0.98	2715108	
IPU10	22.5	2701687	278.0	0.2 - 3.13	8.74	21.81	33.98	4.33	22.24	5.47	7.32	1.93	0.98	2715114	
IPU10	30	2701691	311.0	0.2 - 3.13	8.74	21.81	34.17	4.33	22.83	6.02	7.32	2.13	1.18	2715120	
With larger jaw opening															
IPU10J	0.5	2701647	4.2	0.63 - 1.19	1.77	5.04	8.19	1.57	5.04	1.65	1.34	-	0.43	2715054	
IPU10J	1	2702463	5.5	0.75 - 1.56	2.17	5.94	8.86	1.57	5.55	1.65	1.57	-	0.43	2715012	
IPU10J	3	2702465	38.1	1.56 - 3.13	4.53	10.63	17.01	2.95	10.91	3.07	2.64	-	0.79	2715021	
IPU10J	4.5	2702467	41.9	1.56 - 3.13	4.53	10.63	17.01	2.95	10.91	3.23	2.83	-	0.79	2715021	
IPU10J	6	2702469	58.4	2.00 - 4.00	4.96	11.89	20.28	3.15	13.23	3.31	3.74	1.73	0.79	2715040	
IPU10J	9	2701673	67.2	2.00 - 4.00	4.96	12.80	21.65	3.15	14.17	3.70	4.13	1.73	0.79	2715050	
IPU10J	12	2701681	143.0	2.13 - 4.25	7.01	17.24	26.06	3.15	19.33	4.76	5.35	1.61	0.98	2715105	
IPU10J	16	2701685	187.0	2.50 - 5.00	8.19	20.51	30.87	3.46	22.13	4.76	6.30	1.77	0.98	2715111	
IPU10J	22.5	2701689	328.0	3.13 - 6.13	10.04	24.72	36.93	4.33	25.98	5.47	7.72	1.93	0.98	2715117	
IPU10J	30	2701693	364.0	3.13 - 6.13	10.04	24.72	37.09	4.33	25.98	6.02	7.72	2.13	1.18	2715123	
For stainless steel - with universal hoisting eye															
IPU10S	0.5	2702275	4.2	0 - 0.63	1.73	5.12	8.50	1.57	4.53	1.65	1.10	-	0.43	2715234	
IPU10S	1	2702263	5.3	0 - 0.75	1.77	5.47	8.86	1.57	5.00	1.61	1.50	-	0.43	2715243	
IPU10S	2	2702277	18.7	0 - 1.38	3.07	7.91	14.49	2.76	7.40	2.52	2.17	-	0.63	2715252	
IPU10S	3	2702265	32.6	0 - 1.56	3.94	9.96	17.17	2.95	8.74	3.07	2.36	-	0.79	2715253	
IPU10S	4.5	2702267	35.3	0 - 1.56	3.94	9.96	17.17	2.95	8.94	3.23	2.56	-	0.79	2715253	
IPU10S	6	2702269	52.9	0 - 2.00	4.96	11.89	20.67	3.15	11.50	3.31	3.74	1.73	0.79	2715254	
IPU10S	9	2702271	65.0	0 - 2.00	4.96	12.80	21.73	3.15	12.20	3.70	4.09	1.73	0.79	2715255	
For very hard materials - with universal hoisting eye															
IPU10H	0.5	2702175	4.2	0 - 0.63	1.73	5.12	8.50	1.57	4.53	1.65	1.10	-	0.43	2715207	
IPU10H	0.75	2702163	5.3	0 - 0.75	1.77	5.47	8.86	1.57	5.00	1.61	1.50	-	0.43	2729552	
IPU10H	1	2702177	18.3	0 - 1.38	3.07	7.91	14.49	2.76	7.40	2.52	2.17	-	0.63	2715216	
IPU10H	2	2702165	32.6	0 - 1.56	3.94	9.96	17.17	2.95	8.74	3.07	2.36	-	0.79	2715225	
IPU10H	3	2702167	35.3	0 - 1.56	3.94	9.96	17.17	2.95	8.94	3.23	2.56	-	0.79	2715225	
IPU10H	4.5	2702169	52.9	0 - 2.00	4.96	11.89	20.67	3.15	11.50	3.31	3.74	1.73	0.79	2715227	
IPU10H	6	2702171	65.0	0 - 2.00	4.96	12.80	21.73	2.76	12.20	3.70	4.09	1.73	0.79	2715229	

*Design Factor based on EN 13155 and ASME B30.20.



For vertical lifting, turning and transfer



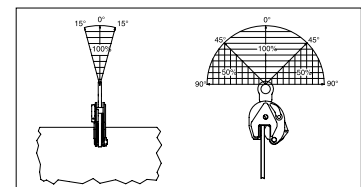
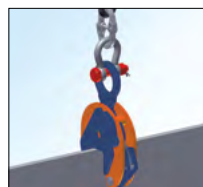
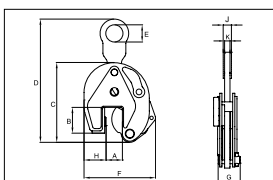
- Available in capacities of .5 through 30 metric tons (higher Working Load Limits are available upon request).
- Wide variety of jaw openings available: 0 to 6.13".
- Welded alloy steel body for strength and smaller size. Forged alloy components, where required.
- Individually Proof Tested to 2 times the Working Load Limit with certification.
- Crosby IP logo, Working Load Limit and jaw opening permanently stamped on body.
- Each product is individually serialized, with the serial number and Proof Load test date stamped on body. User manual and test certificate included with each clamp.
- Available in a variety of styles:
 - IP10 - Standard clamp for materials with a surface hardness to 363HV10 (345 HB).
 - IP10J - Larger jaw opening.
 - IP10S - For use with stainless steel material.
 - IP10H - For use with materials with a surface hardness to 472HV10 (450 HB).
- Full 180° turning range for material transfer, turning or moving.
- Lock open, lock closed ability with latch for pretension on material and then release of material.
- Maintenance and repair kits are available.
- Minimum WLL is 5% of maximum WLL for .5t IP10 only.
- Minimum WLL is 10% of maximum WLL for all other IP10, IP10J, IP10S, IP10H clamps.
- For plate surface hardness till 279HV10, only 5% of minimum WLL is needed.
- Temperature range -40 °F (-40 °C) to +212 °F (+100 °C)

Model IP10 / IP10J / IP10S / IP10H



Model	Working Load Limit (t)*	Stock No.	Weight Each (lb)	Dimensions (in)										Maintenance Kit Stock No.
				Jaw A	B	C	D	E	F	G	H	J	K	
IP10	0.5	2701674	4.0	0 - 0.63	1.73	5.12	7.99	1.57	4.53	1.65	1.10	-	0.43	2715054
IP10	1	2701662	4.9	0 - 0.75	1.77	5.47	8.35	1.57	5.00	1.65	1.50	-	0.43	2715009
IP10	2	2701676	16.8	0 - 1.38	3.07	7.91	12.99	2.76	7.40	2.52	2.17	-	0.63	2715063
IP10	3	2701664	30.4	0 - 1.56	3.94	9.96	17.09	2.95	8.74	3.07	2.36	-	0.79	2715018
IP10	4.5	2701666	33.1	0 - 1.56	3.94	9.96	17.09	2.95	8.94	3.23	2.56	-	0.79	2715018
IP10	6	2701668	51.8	0 - 2.00	4.96	11.89	20.35	3.15	11.50	3.31	3.74	1.57	0.79	2715036
IP10	9	2701670	60.6	0 - 2.00	4.96	12.80	17.52	3.15	12.20	3.70	4.09	1.73	0.98	2715288
IP10	12	2701678	108.0	0 - 2.13	6.30	15.43	22.60	3.15	17.05	4.76	5.39	1.61	0.98	2715102
IP10	16	2701682	150.0	0.25 - 2.50	7.09	18.23	27.01	3.46	19.37	4.76	6.02	1.93	0.98	2715108
IP10	22.5	2701686	243.0	0.25 - 3.13	8.74	21.81	31.81	4.33	22.24	5.47	7.32	1.93	0.98	2715114
IP10	30	2701690	273.0	0.25 - 3.13	8.74	21.81	31.61	4.33	22.24	6.02	7.32	2.13	1.18	2715120
With larger jaw opening														
IP10J	0.5	2701646	4.0	0.59 - 1.18	1.77	5.04	8.23	1.57	5.04	1.61	1.26	-	0.43	2715054
IP10J	1	2702462	5.1	0.75 - 1.56	2.17	5.94	8.35	1.57	5.55	1.65	1.57	-	0.43	2715012
IP10J	3	2702458	36.4	1.56 - 3.13	4.53	10.63	16.93	2.95	10.91	3.07	2.64	-	0.79	2715021
IP10J	4.5	2702460	39.7	1.56 - 3.13	4.53	10.63	16.93	2.95	10.91	3.23	2.83	-	0.79	2715021
IP10J	6	2701705	54.0	2.00 - 4.00	4.96	11.89	19.92	3.15	13.23	3.31	3.74	1.57	0.79	2715040
IP10J	9	2701672	62.8	2.00 - 4.00	4.96	12.80	21.34	3.15	14.17	3.70	4.13	1.73	0.98	2715050
IP10J	12	2701680	128.0	2.13 - 4.25	7.01	17.24	24.41	3.15	19.33	4.76	5.35	1.61	0.98	2715105
IP10J	16	2701684	176.0	2.50 - 5.00	8.19	20.51	28.90	3.46	22.13	4.76	6.30	1.77	0.98	2715111
IP10J	22.5	2701688	289.0	3.13 - 6.13	10.04	24.72	34.76	4.33	25.98	5.47	7.72	1.93	0.98	2715117
IP10J	30	2701692	324.0	3.13 - 6.13	10.04	24.72	34.92	4.33	25.98	6.02	7.72	2.13	1.18	2715123
For stainless steel - with universal hoisting eye														
IP10S	0.5	2702274	4.0	0 - 0.63	1.73	5.12	7.99	1.57	4.53	1.65	1.10	-	0.43	2715234
IP10S	1	2702262	16.8	0 - 0.75	1.77	5.47	8.35	1.57	5.00	1.65	1.50	-	0.43	2715243
IP10S	2	2702276	30.4	0 - 1.38	3.07	7.91	12.99	2.76	7.40	2.52	2.17	-	0.63	2715252
IP10S	3	2702264	33.1	0 - 1.56	3.94	9.96	17.09	2.95	8.74	3.07	2.36	-	0.79	2715253
IP10S	4.5	2702266	51.8	0 - 1.56	3.94	9.96	17.09	2.95	8.94	3.23	2.56	-	0.79	2715253
IP10S	6	2702268	60.6	0 - 2.00	4.96	11.89	20.35	3.15	11.50	3.31	3.74	1.57	0.79	2715254
IP10S	9	2702270	60.6	0 - 2.00	4.96	12.80	21.42	3.15	12.20	3.70	4.09	1.73	0.98	2715255
For very hard materials - with universal hoisting eye														
IP10H	0.5	2702174	4.0	0 - 0.63	1.73	5.12	8.15	1.57	4.53	1.65	1.10	-	0.43	2715207
IP10H	0.75	2702162	4.9	0 - 0.75	1.77	5.47	8.62	1.57	5.12	1.10	1.50	-	0.43	2729552
IP10H	1	2702176	16.8	0 - 1.38	3.07	7.91	12.99	2.76	7.40	2.52	2.17	-	0.63	2715216
IP10H	2	2702164	30.4	0 - 1.56	3.94	9.96	17.09	2.95	8.74	3.07	2.36	-	0.79	2715225
IP10H	3	2702166	33.1	0 - 1.56	3.94	9.96	17.09	2.95	8.94	3.23	2.56	-	0.79	2715225
IP10H	4.5	2702168	51.8	0 - 2.00	4.96	11.89	20.35	3.15	11.50	3.31	3.74	1.57	0.79	2715227
IP10H	6	2702170	60.6	0 - 2.00	4.96	12.80	21.42	3.15	12.20	3.62	4.13	1.73	0.98	2715229

*Design Factor based on EN 13155 and ASME B30.20. Model IP10R (remote control opening and closing via a rope) available on request.



For use in almost all sectors of industry where, during the lift or transfer, no damage to the material is permitted

IPNM10N



- Available in capacities of .5 , 1 and 2 metric tons (higher Working Load
- Limits are available upon request).
- Wide variety of jaw openings available: 0 to 1.56".
- Welded alloy steel body for strength and smaller size. Forged alloy components, where required.
- Individually Proof Tested to 2 times the Working Load Limit with certification.
- Crosby IP logo, Working Load Limit and jaw opening permanently stamped on body.
- Each product is individually serialized, with the serial number and Proof Load test date stamped on body. User manual with test certificate is included with each clamp.
- Full 180° turning range for material transfer, turning or moving.
- Lock open, lock closed ability with latch for pretension on material and then release of material.
- Material must be clean and dry.
- There is no minimum WLL required.
- Maintenance replacement kits are available.
- Temperature range -20° C (-4° F) to 70° C (158° F)
- Optional with brake pad lining for temperature range -40° C (-40° F) to +200° C (+392° F)
- Special jaw openings or curved jaws upon request.

IPNM10P

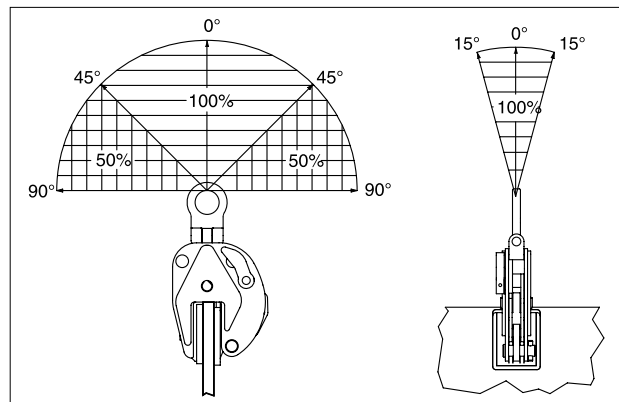
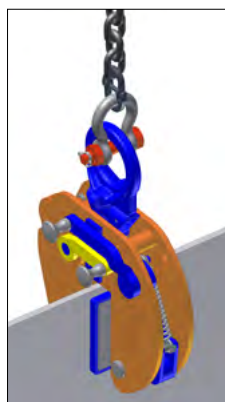
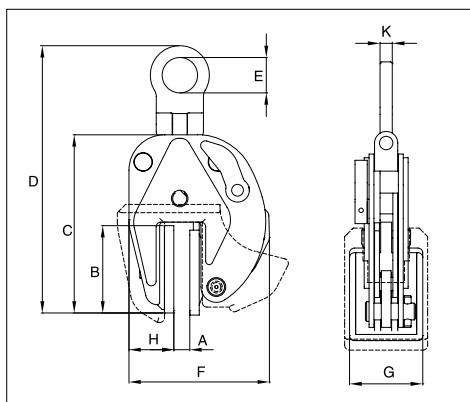


Model IPNM10



Model	Working Load Limit (t)*	Stock No.	Weight Each (lb)	Dimensions (in)										Maintenance Kit Stock No.
				Jaw A	B	C	D	E	F	G	H	K		
IPNM10N	0.5	2703811	6.0	0 - 0.38	3.31	6.26	9.25	1.57	5.04	2.36	1.61	0.43	2715414	
IPNM10N	1	2703738	9.7	0 - 0.75	3.82	8.23	10.94	1.57	7.24	3.15	2.20	0.43	2715423	
IPNM10	2	2703442	32.0	0 - 1.56	6.02	10.16	15.59	2.76	11.65	3.94	6.34	0.63	2729084	
With protection cap														
IPNM10P	0.5	2703278	6.2	0 - 0.38	3.23	6.18	8.70	1.57	5.71	2.68	1.89	0.43	2729440	
IPNM10P	1	2703279	9.9	0 - 0.75	3.82	7.68	10.87	1.57	8.07	3.23	2.60	0.43	2715180	
With larger jaw opening														
IPNM10NJ	1	2703814	10.4	0.81 - 1.44	3.82	8.66	12.64	1.57	7.87	3.15	2.20	0.43	2715468	
IPNM10NJ1	1	2703819	12.1	0 - 1.00	3.82	9.37	13.82	1.57	8.39	3.15	2.48	0.43	2729037	

* Design Factor based on EN 13155 and ASME B30.20.

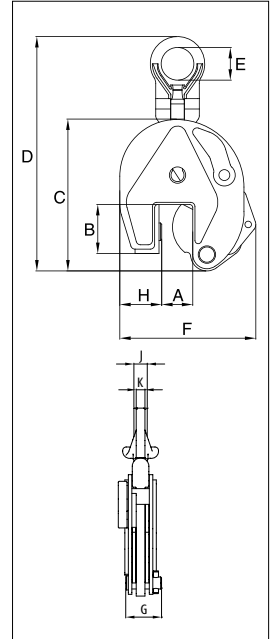


For vertical transport of plates, with automatic closing feature

IPU10A



- Available in capacities of 1, 2 and 6 metric tons (higher Working Load Limits are available upon request).
- Jaw openings available: 0 to 2".
- Welded alloy steel body for strength and smaller size. Forged alloy components where required.
- Individually Proof Tested to 2 times the Working Load Limit with certification.
- Crosby IP logo, Working Load Limit and jaw opening permanently stamped on body.
- Each product is individually serialized, with the serial number and Proof Load test date stamped on body. User manual with test certificate is included with each clamp.
- Full 180° turning range for material transfer, turning or moving.
- Lock open, lock closed ability with latch for pretension on material and then release of material.
- Minimum WLL of 10% of Maximum WLL.
- Maintenance and repair kits are available.
- For use with materials with a plate surface hardness to 279HV10, only 5% of minimum WLL is needed.
- Temperature range -40 °C (-40 °F) to +100 °C (+212 °F)

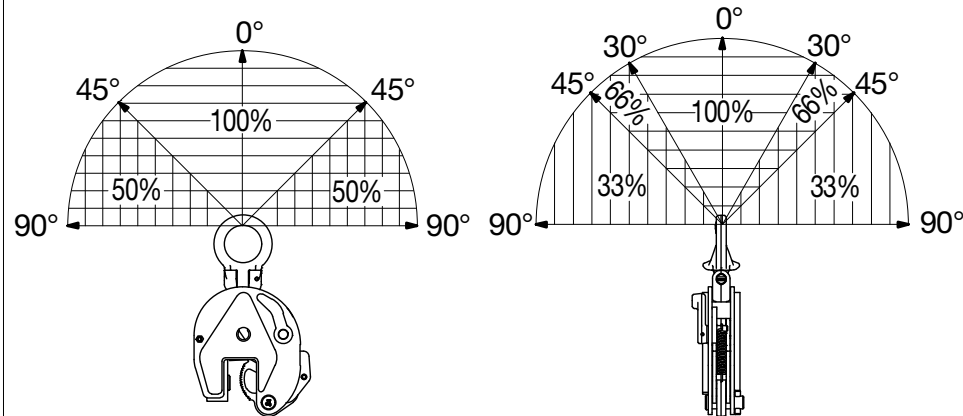


Model IPU10A

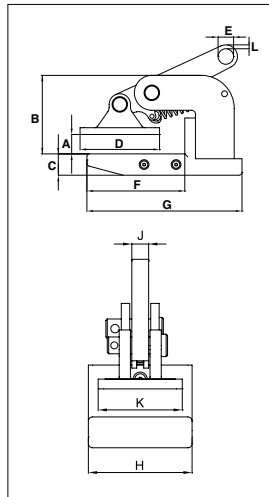
CE Load Rated

Model	Working Load Limit (t)*	Stock No.	Weight Each (lb)	Dimensions (in)										Maintenance Kit Stock No.
				Jaw A	B	C	D	E	F	G	H	J	K	
IPU10A	1	2701628	5.1	0 - 0.75	1.77	5.47	8.86	1.57	5.00	1.65	1.50	-	0.43	2715064
IPU10A	2	2701629	18.5	0 - 1.38	3.07	7.91	14.49	2.76	7.40	2.52	2.17	-	0.63	2715065
IPU10A	6	2701638	56.0	0 - 2.00	4.96	11.89	20.67	3.15	11.50	3.31	3.74	1.73	0.79	2715066

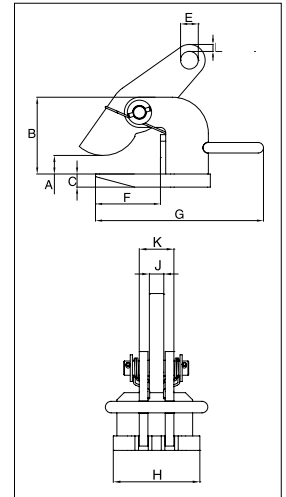
* Design Factor based on EN 13155 and ASME B30.20.



IPHNM10



IPH10



For horizontal lift and transfer with pretension system

- Available in capacities of .5 through 12 metric tons (higher Working Load Limits are available upon request).
- Jaw openings available: 0 to 4.75".
- Welded alloy steel body for strength and smaller size. Forged alloy components, where required.
- Individually Proof Tested to 2 times the Working Load Limit with certification.
- Crosby IP logo, Working Load Limit and jaw opening permanently stamped on body.
- Each product is individually serialized, with the serial number and Proof Load test date stamped on body.
- User manual with test certificate is included with each clamp.
- Maintenance and repair kits are available.

IPHNM10 Horizontal Lifting Clamps



Model	Working Load (per pair) Limit (t)*	Stock No.	Weight Each (lb)	Dimensions (in)										
				Jaw A	B	C	D	E	F	G	H	J	K	L
IPHNM10	0.5	2703287	4.0	0 - 0.75	3.19	0.87	3.23	0.63	3.98	6.30	2.91	0.47	2.36	0.16
IPHNM10	1	2703288	7.0	0 - 1.38	3.66	1.18	3.62	0.63	4.06	6.46	2.91	0.47	2.36	0.28
IPHNM10	2	2703290	16.0	0 - 1.18	5.47	1.18	5.16	0.87	6.54	9.65	3.94	0.79	2.91	0.35
IPHNM10J	2	2703291	17.0	1.19 - 2.38	6.65	1.18	5.16	0.87	6.54	9.65	3.94	0.79	2.91	0.35

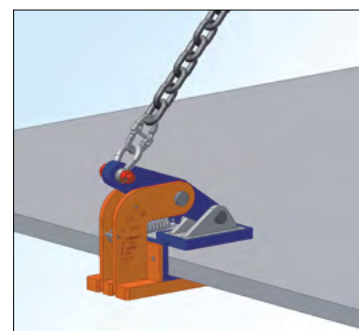
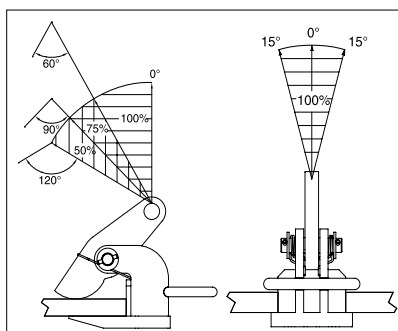
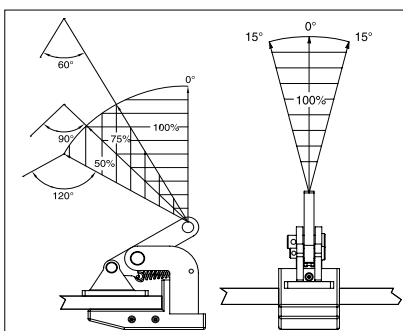
*Design Factor based on EN 13155 and ASME B30.20.

Model IPH10 / IPH10J: With Spring Loaded Tension, Magnets and Handle



Model	Working Load (per pair) Limit (t)*	Stock No.	Weight Each (lb)	Dimensions (in)									
				Jaw A	B	C	E	F	G	H	J	K	L
IPH10	0.5+	2703297	4.0	0 - 0.75	3.39	0.47	0.63	4.06	5.91	2.36	0.47	1.06	0.16
IPH10	1+	2703298	5.5	0 - 1.38	3.94	0.63	0.63	4.06	5.91	2.36	0.47	1.22	0.28
IPH10	2	2703522	12.1	0 - 2.38	4.61	0.63	0.87	4.29	10.08	4.33	0.79	1.57	0.35
IPH10	3	2703523	16.6	0 - 2.38	4.61	0.79	1.02	4.29	10.47	4.72	0.79	1.89	0.43
IPH10	4.5	2703524	23.2	0 - 2.38	5.20	0.98	1.18	4.09	11.02	5.12	0.79	1.89	0.47
IPH10	6	2703525	28.7	0 - 2.38	5.63	0.98	1.42	4.84	12.60	5.12	0.79	1.89	0.55
IPH10	9	2703526	40.8	0 - 2.38	6.18	1.18	1.69	5.24	12.99	5.51	0.98	2.44	0.63
IPH10	12	2703527	47.5	0 - 2.38	6.77	1.18	1.85	5.55	13.90	5.91	0.98	2.44	0.67
With larger jaw opening													
IPH10J	3	2703533	19.0	2.38 - 4.75	6.97	0.79	1.02	4.29	10.47	4.72	0.79	1.89	0.43
IPH10J	4.5	2703534	26.0	2.38 - 4.75	7.56	0.98	1.18	4.09	11.02	5.12	0.79	1.89	0.47
IPH10J	6	2703535	33.0	2.38 - 4.75	7.99	0.98	1.42	4.84	12.60	5.12	0.79	1.89	0.55
IPH10J	9	2703536	45.0	2.38 - 4.75	8.54	1.18	1.69	5.24	12.99	5.51	0.98	2.44	0.63
IPH10J	12	2703537	53.0	2.38 - 4.75	9.13	1.18	1.85	5.55	13.90	5.91	0.98	2.44	0.67

*Design Factor based on EN 13155 and ASME B30.20. +No handle or magnets.

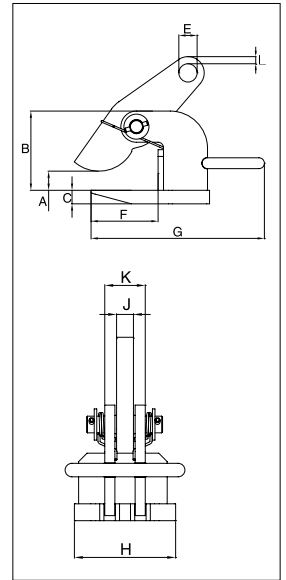


IPH10E



For horizontal lifting and transfer

- Available in capacities of 2.0 thru 12 metric tons.
- Wide variety of jaw openings available: 0 to 4.75".
- Welded alloy steel body for strength and smaller size. Forged alloy, components where required.
- Equipped with handle for easy placement.
- Individually Proof Tested to 2 times the Working Load Limit with certification.
- Crosby IP logo, Working Load Limit and jaw opening permanently stamped on body.
- Each product is individually serialized, with the serial number and Proof Load test date stamped on body. User manual with test certificate is included with each clamp.
- Maintenance and repair kits are available.
- Temperature range -40 °C (-40 °F) to +100 °C (+212 °F)



Model IPH10E



Model	Working Load (per pair) Limit (t)*	Stock No.	Weight Each (lb)	Dimensions (in)									
				Jaw A	B	C	E	F	G	H	J	K	L
IPH10E	2	2703542	12.0	0 - 2.38	4.61	0.63	0.87	4.29	10.08	4.33	0.79	1.57	0.35
IPH10E	3	2703543	16.5	0 - 2.38	4.61	0.79	1.02	4.29	10.47	4.72	0.79	1.89	0.43
IPH10E	4.5	2703544	23.0	0 - 2.38	5.20	0.98	1.18	4.09	11.02	5.12	0.79	1.89	0.47
IPH10E	6	2703545	27.0	0 - 2.38	5.63	0.98	1.42	4.84	12.60	5.12	0.79	1.89	0.55
IPH10E	9	2703546	41.0	0 - 2.38	6.18	1.18	1.69	5.24	12.99	5.51	0.98	2.44	0.63
IPH10E	12	2703547	47.0	0 - 2.38	6.77	1.18	1.85	5.55	13.90	5.91	0.98	2.44	0.67

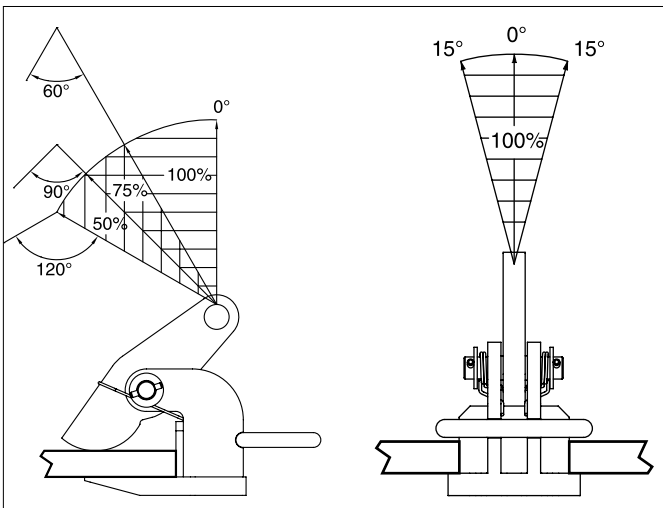
*Design Factor based on EN 13155 and ASME B30.20.

Model IPH10JE



Model	Working Load (per pair) Limit (t)*	Stock No.	Weight Each (lb)	Dimensions (in)									
				Jaw A	B	C	E	F	G	H	J	K	L
IPH10JE	3	2703553	19.0	2.38 - 4.75	6.97	0.79	1.02	4.29	10.47	4.72	0.79	1.89	0.43
IPH10JE	4.5	2703554	26.0	2.38 - 4.75	7.56	0.98	1.18	4.09	11.02	5.12	0.79	1.89	0.47
IPH10JE	6	2703555	33.0	2.38 - 4.75	7.99	0.98	1.42	4.84	12.60	5.12	0.79	1.89	0.55
IPH10JE	9	2703556	45.0	2.38 - 4.75	8.54	1.18	1.18	5.24	12.99	5.51	0.98	2.44	0.63
IPH10JE	12	2703557	53.0	2.38 - 4.75	9.13	1.18	1.85	5.55	13.90	5.91	0.98	2.44	0.67

*Design Factor based on EN 13155 and ASME B30.20.

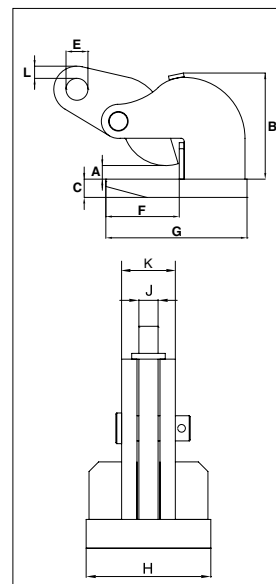


IPHOZ



For horizontal lifting and transfer

- Available in capacities of .75 through 12 metric tons (higher Working Load Limits are available upon request).
- Wide variety of jaw openings available: 0 to 2.38".
- Welded alloy steel body for strength and smaller size. Forged alloy, components where required.
- Equipped with handle for easy placement.
- Individually Proof Tested to 2 times the Working Load Limit with certification.
- Crosby IP logo, Working Load Limit and jaw opening permanently stamped on body.
- Each product is individually serialized, with the serial number and Proof Load test date stamped on body. User manual with test certificate is included with each clamp.
- Maintenance and repair kits are available.
- Temperature range -40 °C (-40 °F) to +100 °C (+212 °F)

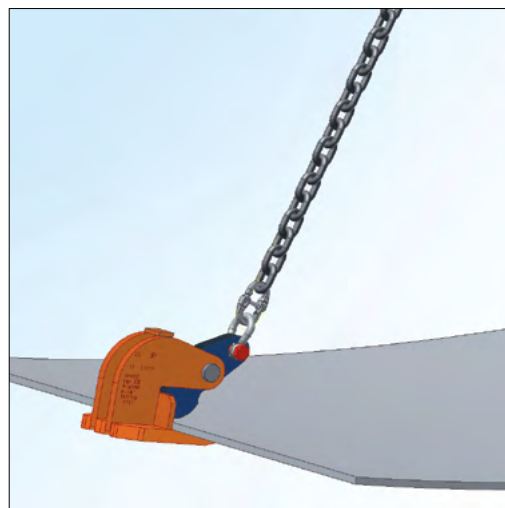
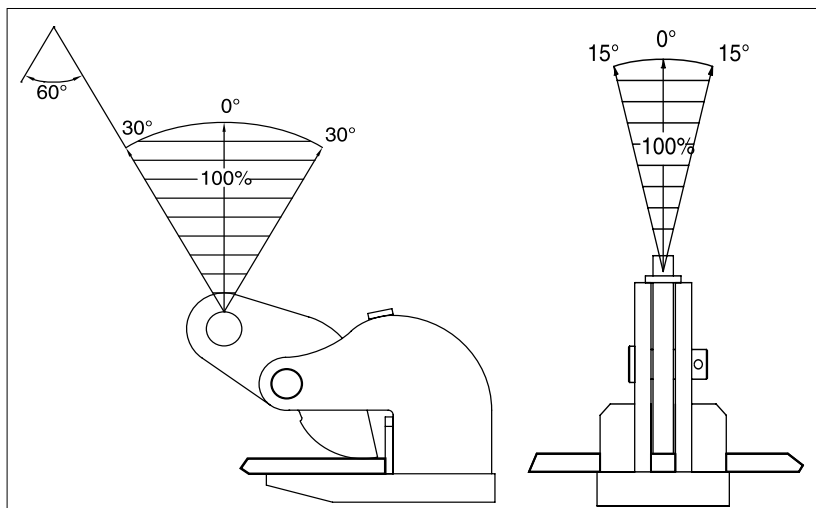


IPHOZ Horizontal Lifting Clamp



Model	Working Load (per pair) Limit (t)*	Stock No.	Weight Each (lb)	Dimensions (in)									
				Jaw A	B	C	E	F	G	H	J	K	L
IPHOZ	0.75	2705401	6.0	0 - 1.19	3.70	0.63	0.63	2.76	4.65	3.19	0.47	1.22	0.47
IPHOZ	1.5	2705402	12.0	0 - 1.75	5.24	0.63	0.87	4.92	7.56	3.94	0.63	1.42	0.47
IPHOZ	3	2705403	17.0	0 - 1.75	5.39	0.79	1.02	4.92	7.87	4.72	0.79	1.89	0.39
IPHOZ	4.5	2705404	21.0	0 - 1.75	5.43	0.98	1.18	4.96	8.66	4.72	0.79	1.97	0.39
IPHOZ	6	2705405	34.0	0 - 2.38	6.73	1.18	1.42	5.31	9.25	5.12	0.79	2.20	0.79
IPHOZ	9	2705406	55.0	0 - 2.38	8.31	1.18	1.69	6.54	10.87	6.30	0.98	2.44	0.79
IPHOZ	12	2705407	64.0	0 - 2.38	8.54	1.57	1.85	6.61	11.57	7.48	0.98	2.44	0.75

*Design Factor based on EN 13155 and ASME B30.20.



IPPE10B



For lifting and transporting non-bendable sheet metal in a horizontal position.

- Available in capacities of 3 through 12 metric tons (higher Working Load Limits are available upon request).
- Wide variety of jaw openings available: 0 to 16.5".
- Welded alloy steel body for strength and smaller size. Forged alloy components, where required.
- Individually Proof Tested to 2 times the Working Load Limit with certification.
- Crosby IP logo, Working Load Limit and jaw opening permanently stamped on body.
- Each product is individually serialized, with the serial number and Proof Load test date stamped on body. User manual with test certificate is included with each clamp.
- Maintenance and repair kits are available.
- IPPE10: Magnets in foot plate (also applies for D and H Type).
- IPPE10NM: Non-marring (also applies for D and H-Type).
- IPPE10: Temperature range -40 °C (-40 °F) to +100 °C (+212 °F)
- IPPE10NM: Temperature range -20 °C (-4 °F) to +70 °C (+158 °F)

IPPE10DNM

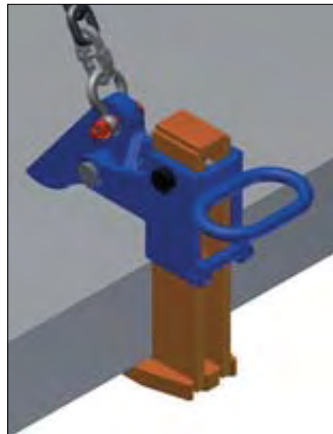
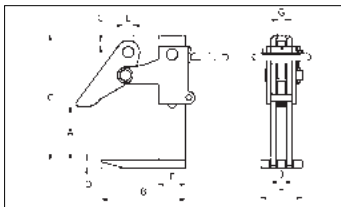
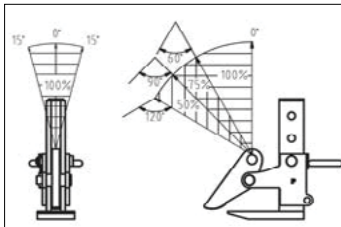


Model IPPE10 / IPPE10NM

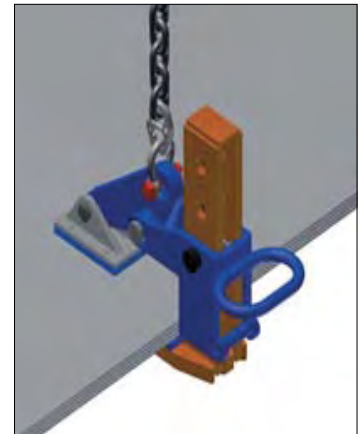
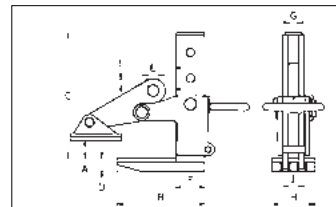
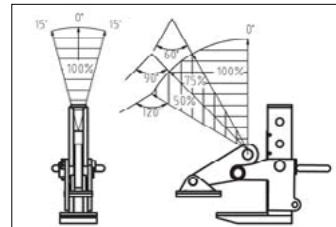


Model	Working Load Limit (t)*	Stock No.	Weight Each (lb)	Dimensions (in)									
				Jaw A	B	C	D	E	F	G	H	J	L
IPPE10B	3	2703862	25.0	0 - 7.13	8.03	12.68	0.79	1.02	2.60	0.79	3.94	1.97	0.59
IPPE10B	6	2703871	35.0	0 - 7.13	8.66	13.39	0.98	1.18	2.91	0.79	5.51	2.36	0.51
IPPE10B	9	2703888	54.0	0 - 7.13	9.76	14.37	0.98	1.34	3.54	0.79	7.48	2.76	0.51
IPPE10B	12	2703921	72.0	0 - 7.13	10.31	14.80	1.18	1.57	3.54	0.98	7.87	2.76	0.71
With larger jaw opening													
IPPE10D	3	2703882	25.0	0 - 11.8	8.03	17.40	0.79	1.02	2.60	0.79	3.94	1.97	0.59
IPPE10H	6	2703875	35.0	0 - 16.5	8.66	22.83	0.98	1.18	2.91	0.79	5.51	2.36	0.51
IPPE10H	9	2703890	54.0	0 - 16.5	9.76	23.82	0.98	1.34	3.54	0.79	7.48	2.76	0.51
IPPE10H	12	2703923	72.0	0 - 16.5	10.31	24.25	1.18	1.57	3.54	0.98	7.87	2.76	0.71
Non-Marring types													
IPPE10BNM	3	2703864	27.0	0 - 7.13	8.03	12.68	1.18	1.18	2.68	0.79	3.94	1.97	0.59
IPPE10BNM	6	2703872	38.0	0 - 7.13	8.66	13.39	1.38	1.38	2.99	0.79	5.51	2.36	0.51
IPPE10BNM	9	2703894	61.0	0 - 7.13	9.76	14.37	1.38	1.38	3.62	0.79	7.48	2.76	0.51
IPPE10BNM	12	2703927	77.0	0 - 7.13	10.31	14.80	1.57	1.57	3.62	0.98	7.87	2.76	0.59
Non-Marring types with larger jaw opening													
IPPE10DNM	3	2703886	27.0	0 - 11.8	8.03	17.40	0.79	1.02	2.60	0.79	3.94	1.97	0.59
IPPE10HNM	6	2703879	38.0	0 - 16.5	8.66	22.83	0.98	1.18	2.91	0.79	5.51	2.36	0.51
IPPE10HNM	9	2703920	61.0	0 - 16.5	9.76	23.82	0.98	1.34	3.54	0.79	7.48	2.76	0.51
IPPE10HNM	12	2703929	77.0	0 - 16.5	10.31	24.25	1.18	1.57	3.54	0.98	7.87	2.76	0.71

*Design Factor based on EN 13155 and ASME B30.20.



IPPE10



IPPE10NM

IPBC



For horizontal transfer - with pretension system

- Available in capacities of 1 through 4.5 metric tons (Higher Working Load Limits are available upon request).
- Jaw openings available: 0 to 1.56"
- Welded alloy steel body for strength and smaller size. Forged alloy, components where required.
- Equipped with handle for easy placement.
- Individually Proof Tested to 2 times the Working Load Limit with certification.
- Company name (CrosbyIP), logo, Working Load Limit and jaw opening permanently stamped on body.
- Each product is individually serialized, with the serial number and Proof Load test date stamped on body. User manual with test certificate is included with each clamp.
- Maintenance and repair kits are available.
- Manufactured by an ISO 9001 facility.
- Temperature range -40 °C (-40 °F) to +100 °C (+212 °F)

IPHGUZ

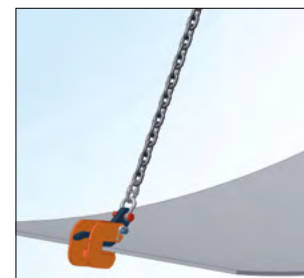
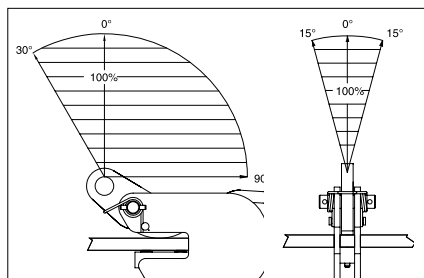
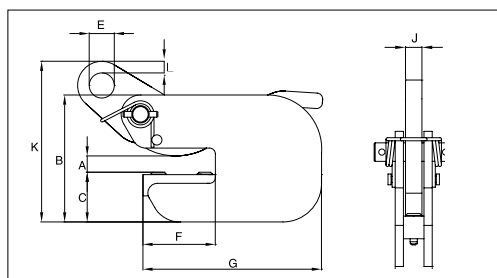


Model IPBC



Model	Working Load Limit (t)*	Stock No.	Weight Each (lb)	Dimensions (in)										Maintenance Kit Stock No.
				Jaw A	B	C	D	E	F	G	H	J	K	
IPBC	1	2700410	7.7	0 - 0.81	5.20	2.05	1.02	2.95	7.28	1.42	0.63	7.17	0.47	2715189
IPBC	2	2700411	14.3	0 - 1.00	5.98	2.44	1.18	3.23	8.27	1.93	0.79	8.58	0.59	2715198
IPBC	3	2700412	18.8	0 - 1.00	6.18	2.60	1.18	3.23	8.27	2.24	0.79	8.86	0.59	2715198

*Design Factor based on EN 13155 and ASME B30.20.

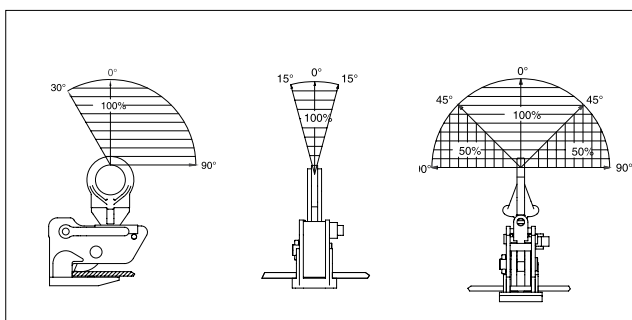
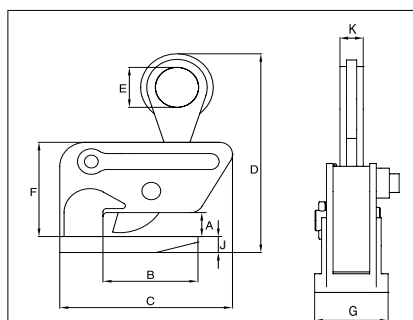


IPHGUZ: Universal Lifting Eye / IPHGZ: Fixed Hoisting Eye



Model	Working Load Limit (t)*	Stock No.	Weight Each (lb)	Dimensions (in)									Maintenance
				Jaw A	B	C	D	E	F	G	H	K	Kit Stock No.
IPHGUZ	1.5	2705455	19.8	0 - 1.00	4.33	9.13	11.30	2.76	5.47	3.54	0.79	0.63	2715450
IPHGUZ	3	2705456	43.9	0 - 1.56	4.69	9.96	13.70	2.95	6.89	4.72	0.98	0.79	2715452
IPHGUZ	4.5	2705457	66.1	0 - 1.56	4.69	11.85	14.57	3.15	6.89	6.10	1.18	1.73	2715454
Fixed Hoisting Eye													
IPHGZ	0.75	2705451	8.8	0 - 1.00	3.23	5.83	8.11	1.97	3.90	3.86	0.47	0.87	-
IPHGZ	1.5	2705452	4.4	0 - 1.00	4.33	7.87	9.84	1.97	4.65	3.54	0.79	1.10	-
IPHGZ	3	2705453	27.1	0 - 1.56	4.72	8.94	12.01	2.76	5.83	4.72	0.98	1.26	-
IPHGZ	4.5	2705454	55.1	0 - 1.56	4.72	11.18	15.00	2.76	7.13	6.10	1.18	1.57	-

*Design Factor based on EN 13155 and ASME B30.20.

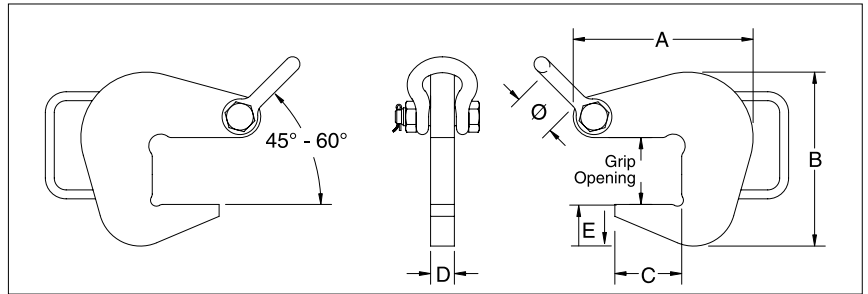


IPPH



For lifting pipe, tube, or any similarly shaped fabrications

- Crosby IP Pipe Hooks provide a fast and efficient method for lifting pipe, tube or any similarly shaped fabrications.
- Alloy steel plate construction.
- Equipped with a convenient handle.
- Equipped with a Bolt Type Shackle.
- Optional non marring inserts available.
- Used in pairs with 45° - 60° horizontal angle or 60° - 90° included angle.
- Temperature range -40 °F (-40 °C) to +212 °F (+100 °C)



Model IPPH



Model	Working Load (per pair) Limit (t)*	Stock No.	Weight Each (lb)	Grip Opening (in)**	Dimensions (in)						Shackle Size (in)	Optional Nylon (PA6) Inserts
					A	B	C	D	E	Ø		
IPPH	2	2734500	5.9	2.06	5.81	5.06	2.06	1.00	1.25	1.69	5/8	2734900
IPPH	4	2734509	9.9	2.81	7.56	7.31	2.81	1.00	1.75	1.69	5/8	2734909
IPPH	6	2734518	17.0	4.06	10.18	10.06	4.06	1.00	2.25	2.00	3/4	2734918
IPPH	10	2734527	38.1	6.06	14.81	15.06	6.06	1.00	3.50	2.69	1	2734927
IPPH	15	2734536	48.1	6.06	14.81	15.43	6.06	1.18	3.86	2.91	1 1/8	2734936
IPPH	20	2734545	50.9	6.06	14.81	16.02	6.06	1.18	4.45	2.91	1 1/8	2734945

*Design factor based on EN13155 and ASME B30.20.

**NOTE: To determine grip opening when equipped with an insert, see the dimensions in the Pipe Hook Inserts table below.

- Replaceable nylon (PA6) inserts for use with the IPPHI
- Pipe Hook that minimizes thread and pipe damage.

IPPHI



Pipe Hook Inserts

Model	Stock No.	ID of Pipe (in)	Grip Opening (in)
IPPHI	2734900	3-12	1.61
	2734909	12-18	1.73
	2734918	18-30	2.48
	2734927	30-42	3.74
	2734936	42-52	5.71
	2734945	42-52	5.71

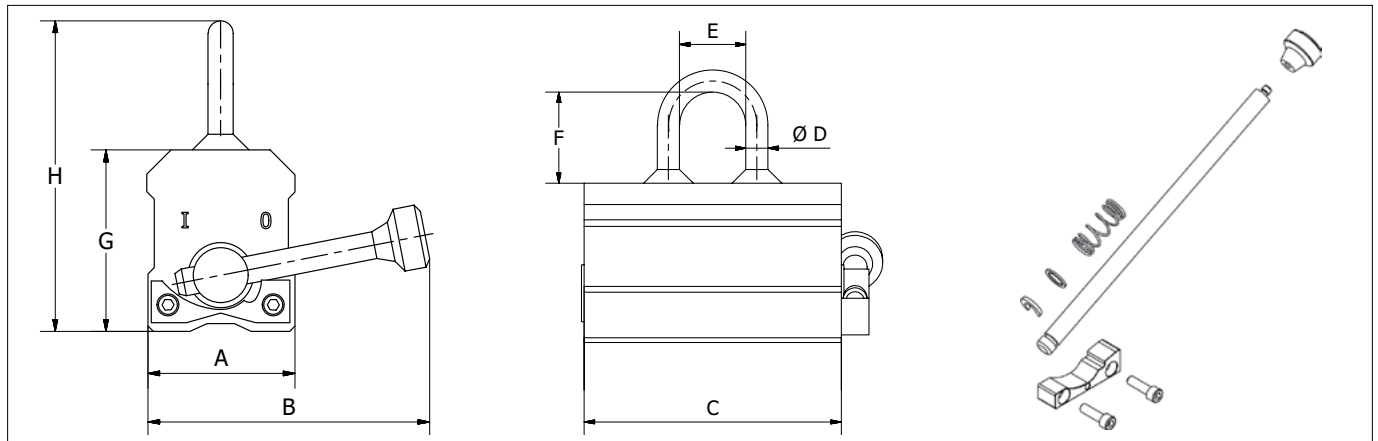


MAGNEX™



For horizontal lifting and transfer

- Solid steel construction with recessed area, reducing risk of damage to tags for identification and technical user information.
- Fully welded construction, minimizing maintenance costs.
- Innovative and patented easy switch stop block, equipped with ball bearing and ergonomic handle for increased safety and ease of use.
- Individually proof tested to 3 times the working load limit with certification.
- Each product is individually serialized, with the serial number and proof load test date stamped on body.
- User manual with test certificate included with each magnet
- 5-year warranty on magnetic system.
- CE certified including test certificate in accordance with EN 13155.
- Maintenance replacement kits are available.
- Can be used on both flat and round steel surfaces.
- Temperature range +32 °F (0 °C) to +176 °F (+80 °C)



Crosby MAGNEX™ Lifting Magnet



Model	Working Load Limit (lb)*	Stock No.	Weight Each (lb)	Dimensions (in)							
				Jaw A	B	C	D	E	F	G	H
MAGNEX150	331	2708023	6.8	2.40	4.50	4.00	0.40	1.20	1.60	2.70	4.70
MAGNEX300	661	2708024	24.0	3.90	8.30	6.00	0.60	2.00	2.60	3.90	7.00
MAGNEX600	1323	2708025	47.8	4.70	9.60	9.70	0.80	2.50	2.60	3.90	7.20
MAGNEX1000	2205	2708026	90.2	5.70	13.00	12.00	0.80	2.50	3.60	4.90	9.30
MAGNEX1500	3307	2708027	158.1	6.50	15.40	14.70	0.80	2.50	3.60	6.30	10.70
MAGNEX2000	4409	2708028	201.5	6.50	18.70	18.80	0.80	2.50	3.60	6.30	10.70

Model	Flat Material			Round Material			Handle Kit Stock No.
	Working Load Limit (lb)*	min. thickness for max. WLL (in)*	min. load thickness (in) Each (lb)	Working Load Limit (lb)*	min. Ø (in)	max. Ø (in)	
MAGNEX150	331	0.98	0.08	166	2.00	3.90	2718001
MAGNEX300	661	1.18	0.16	331	2.40	7.90	2718002
MAGNEX600	1323	1.57	0.24	662	2.60	10.60	2718003
MAGNEX1000	2205	2.36	0.39	1103	3.90	11.80	2718004
MAGNEX1500	3307	3.15	0.59	1654	5.90	13.80	2718005
MAGNEX2000	4409	3.15	0.59	2205	5.90	13.80	2718006

*WLL based on low carbon, mild steel and a working temperature 68°F

IPBK10



For the transfer and stacking of steel beams

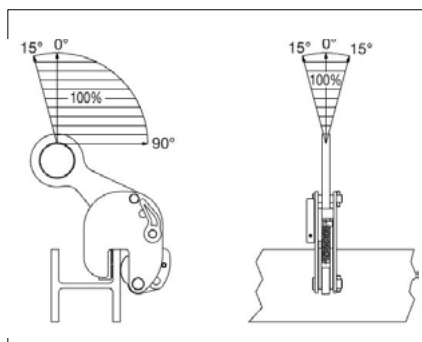
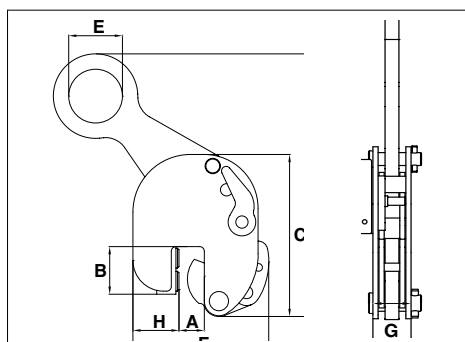
- Available in capacities of 0.5 through 4 metric tons.
- Jaw openings available: 0.2 to 1.13".
- Welded alloy steel body for strength and smaller size. Forged alloy components, where required.
- Individually Proof Tested to 2 times the Working Load Limit with certification.
- Crosby IP logo, Working Load Limit and jaw opening permanently stamped on body.
- Each product is individually serialized, with the serial number and Proof Load test date stamped on body. User manual with test certificate is included with each clamp.
- Minimum WLL of 10% of Maximum WLL.
- For use with materials with a plate surface hardness to 279HV10, only 5% of minimum WLL is needed.
- Maintenance and repair kits are available.
- Temperature range -40 °F (-40 °C) to +212 °F (+100 °C)

Model IPBK10

CE Load Rated

Model	Working Load Limit (t)*	Stock No.	Weight Each (lb)	Dimensions (in)										Maintenance Kit Stock No.
				Jaw A	B	C	D	E	F	G	H	J		
IPBK10	0.5	2703931	5.3	0.19 - 0.63	1.69	5.28	8.50	1.77	4.72	1.89	1.77	0.39	2715261	
IPBK10	1	2703837	5.7	0.19 - 0.63	1.69	5.98	9.06	1.77	4.84	1.85	1.77	0.39	2729234	
IPBK10	2	2703838	16.1	0.19 - 1.00	2.44	8.78	13.43	2.76	7.80	2.40	2.76	0.63	2729238	
IPBK10	4	2703839	37.3	0.19 - 1.13	2.95	11.10	16.97	3.94	9.13	3.07	2.83	0.79	2729243	

Design Factor based on EN 13155 and ASME B30.20.



IPBHZ



For the lifting and transfer of steel beams

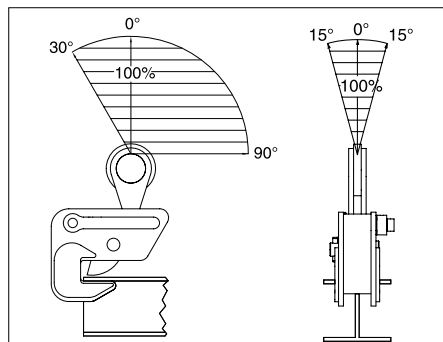
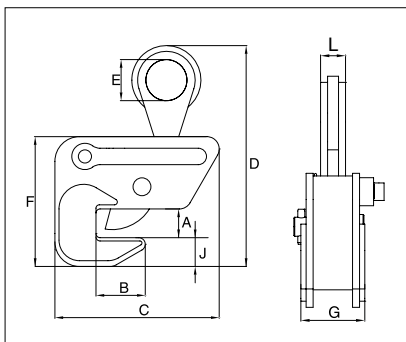
- Available in capacities of .75 through 12 metric tons (higher Working Load Limits are available upon request).
- Wide variety of jaw openings available: 0 to 1.56".
- Welded alloy steel body for strength and smaller size. Forged alloy components, where required.
- Individually Proof Tested to 2 times the Working Load Limit with certification.
- Crosby IP logo, Working Load Limit and jaw opening permanently stamped on body.
- Each product is individually serialized, with the serial number and Proof Load test date stamped on body. User manual with test certificate is included with each clamp.
- Maintenance and repair kits are available.
- Temperature range -40 °F (-40 °C) to +212 °F (+100 °C)

Model IPBHZ



Model	Working Load Limit (t)*	Stock No.	Weight Each (lb)	Dimensions (in)								
				Jaw A	B	C	D	E	F	G	J	L
IPBHZ	0.75	2705461	6.6	0 - 1.00	1.57	5.83	8.66	1.97	5.12	2.72	1.30	0.87
IPBHZ	1.5	2705462	13.2	0 - 1.00	2.36	7.99	10.04	1.97	6.22	2.87	1.38	1.10
IPBHZ	3	2705463	23.2	0 - 1.56	3.15	8.94	12.80	2.76	7.40	4.41	1.50	1.26
IPBHZ	4.5	2705464	55.1	0 - 1.56	4.41	11.18	16.26	2.76	9.88	4.57	3.15	1.57
IPBHZ	12	2705467	93.3	0 - 1.56	4.92	18.35	19.29	3.54	12.48	3.54	3.54	1.85

* Design Factor based on EN 13155 and ASME B30.20.



IPTK



IPTKW

For transferring steel beams and attaching tackle eye

- Available in capacities of 2 through 25 metric tons (higher Working Load Limits are available upon request).
- Wide variety of jaw openings available: 2.95" to 40.16".
- Welded alloy steel body for strength and smaller size. Forged alloy components, where required.
- Individually Proof Tested to 2 times the Working Load Limit with certification.
- Crosby IP logo, Working Load Limit and jaw opening permanently stamped on body.
- Each product is individually serialized, with the serial number and Proof Load test date stamped on body. User manual with test certificate is included with each clamp.
- Maintenance and repair kits are available.
- Temperature range -40 °F (-40 °C) to +212 °F (+100 °C)

IPTKU



IPTKUD

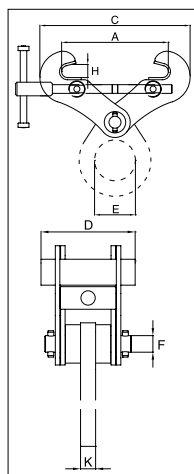
IPTK: with hoisting eye / IPTK(W): without hoisting eye

IPTKU: with hinged hoisting eye / IPTKU(D): with double locking device

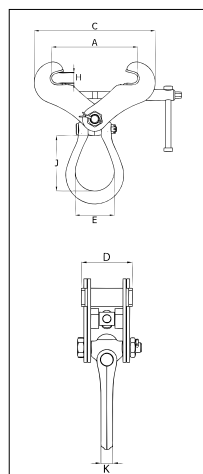


Model	Working Load Limit (t)*	Stock No.	Weight Each (lb)	Dimensions (in)							
				Jaw A	C	D	E	G	H	J	K
IPTK	2	2700996	13.2	2.95 - 7.48	A + 3.13	4.92	2.95	-	0.98	-	0.79
IPTK	3	2700997	14.3	2.95 - 7.48	A + 3.13	4.92	2.95	-	0.98	-	0.79
IPTK	4	2700998	18.7	5.91 - 11.02	A + 4.00	4.92	2.95	-	1.38	-	0.79
IPTK	5	2700994	24.3	4.72 - 13.78	A + 7.67	4.92	2.95	-	1.57	-	0.79
IPTK	25	2702999	496.0	17.72 - 40.16	A + 8.66	19.69	4.92	-	2.99	-	1.77
Without Hoisting Eye											
IPTKW	2	2700966	8.8	3.00 - 7.50	A + 3.13	4.92	-	1.10	0.98	-	-
IPTKW	3	2700967	9.9	3.00 - 7.50	A + 3.13	4.92	-	1.10	0.98	-	-
IPTKW	4	2700968	13.9	5.88 - 11.25	A + 4.00	4.92	-	1.30	1.38	-	-
IPTKW	5	2700969	19.4	4.75 - 13.75	A + 7.67	4.92	-	1.30	1.57	-	-
With Improved Hinged Hoisting Eye											
IPTKU	2	2707996	12.6	3.00 - 7.50	A + 3.94	6.50	2.99	-	0.87	3.90	0.75
IPTKU	3	2707997	14.1	3.00 - 7.50	A + 3.94	6.50	3.50	-	0.87	4.80	0.87
IPTKU	4	2707998	26.7	4.75 - 11.25	A + 5.91	7.28	3.50	-	1.57	4.80	0.87
IPTKU	5	2707994	32.0	4.75 - 13.75	A + 6.89	7.28	3.50	-	1.57	4.80	0.87
IPTKU	10	2707970	90.4	7.88 - 18.00	A + 11.81	8.46	4.13	-	2.36	5.98	1.02
With Double Locking Device											
IPTKUD	2	2709996	13.2	3.00 - 7.50	A + 3.94	6.50	2.99	-	0.87	3.90	0.75
IPTKUD	3	2709993	14.6	3.00 - 7.50	A + 3.94	6.50	3.50	-	0.87	4.80	0.87
IPTKUD	4	2709995	27.1	4.75 - 11.25	A + 5.91	7.28	3.50	-	1.57	4.80	0.87
IPTKUD	5	2709994	33.7	4.75 - 13.75	A + 6.89	7.28	3.50	-	1.57	4.80	0.87
IPTKUD	10	2709970	94.8	7.88 - 18.00	A + 11.81	8.46	4.13	-	2.36	5.98	1.02

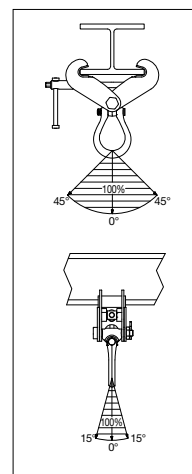
* Design Factor based on EN 13155 and ASME B30.20.



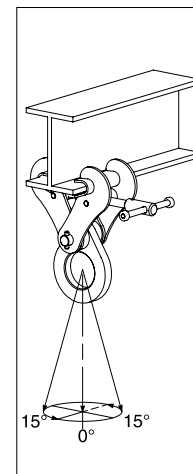
IPTK/IPTKW



IPTKU(D)(M)



IPTKU(D)



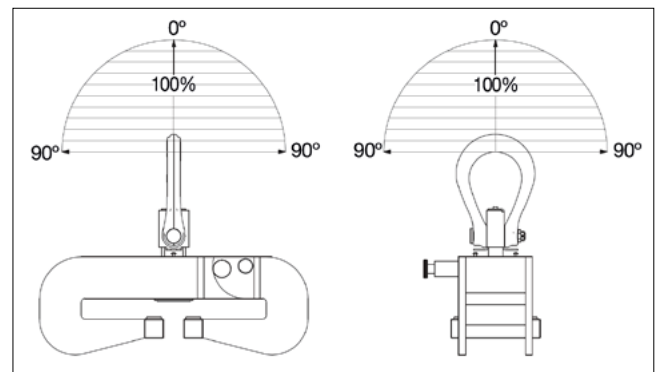
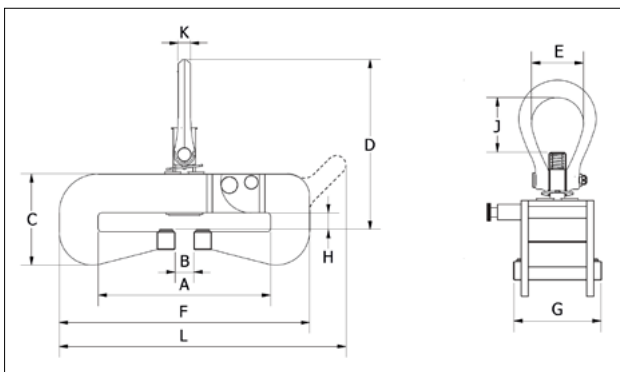
IPTK(W)

IPTKA



Universal beam clamp, maintains full rated capacity in all directions, at angles up to 90°

- Bail swivels 360° and pivots 180°.
- Easy to close and open with a hinged body with self-locking device.
- Easy to handle with handgrips.
- No interference or space limitations when tightening the clamp.
- Multi-purpose hoisting eye to be used for tightening as well as for hoisting.
- Maintenance and repair kits are available.
- Can be used for a wide range of profile sizes.
- Individually Proof Tested to 2 times the Working Load Limit with certification.
- Crosby IP logo, Working Load Limit and jaw opening permanently stamped on body.
- Temperature range -40 °F (-40 °C) to +212 °F (+100 °C)



Model IPTKA



Model	Working Load Limit (t)*	Stock No.	Weight Each (lb)		Dimensions (in)										Maintenance
				Jaw A	B	C	D	E	F	G	H	J	K	L	Kit Stock No.
IPTKA	1	2707101	13.5	3.5 - 7.0	1.34	4.29	7.40	1.30	10.39	3.94	0.24 - 1.00	1.69	0.50	-	2715477
IPTKA	3	2707111	35.0	3.9 - 8.1	1.34	5.87	12.09	3.50	12.20	5.12	0.24 - 1.00	3.70	0.87	14.53	2729495
IPTKA	3	2707116	31.3	2.8 - 4.9	0.94	5.28	11.69	3.50	10.12	5.12	0.24 - 1.00	3.70	0.87	12.40	2729495
IPTKA	3	2707117	35.3	3.9 - 8.1	2.13	6.46	12.68	3.50	12.20	5.12	0.80 - 1.57	3.70	0.87	14.53	2729495
IPTKA	5	2707065	51.4	3.9 - 12	1.34	6.46	12.05	3.50	17.72	5.91	0.24 - 1.00	3.70	0.87	-	2729496
IPTKA	5	2707114	37.3	2.8 - 4.9	0.94	5.47	11.65	3.50	10.51	5.91	0.24 - 1.00	3.70	0.87	13.23	2729496
IPTKA	5	2707115	51.2	5.1 - 12	2.91	7.05	12.64	3.50	17.72	5.91	0.80 - 1.57	3.70	0.87	-	2729496
IPTKA	10	2707118	137.0	5.5 - 16	2.91	9.21	17.72	4.76	23.60	8.66	0.47 - 1.65	6.00	1.18	-	2729563
IPTKA	15	2707124	157.0	5.5 - 16	2.91	9.61	17.72	4.76	24.80	8.66	0.47 - 1.65	6.00	1.18	-	2729563

*Design Factor based on EN 13155 and ASME B30.20.



IPBCNS



For the lifting and transfer of wide flange beam sections and plate girders

- When lifting, these beam clamps grip the beam at three points, and when properly balanced and safely guided, the beam can be handled even if the clamp is slightly off center lengthwise.
- Capacities: 13.5 through 32 metric tons (higher Working Load Limits are available upon request).
- Eliminates the need for slings, chokers, and spreader bars.
- When applied to load, the tongs automatically open and slide under the flange of the beam.
- Center plate and gripping tongs work together - the heavier the beam, the greater the clamping pressure.
- Base is recessed to accept studs welded to the beam surface.
- Welded alloy steel body for strength and smaller size. Forged alloy components, where required.
- Individually Proof Tested to 2 times the Working Load Limit with certification.
- Crosby IP logo, Working Load Limit and jaw opening permanently stamped on body.
- Each product is individually serialized, with the serial number and Proof Load test date stamped on body. User manual with test certificate is included with each clamp.
- Maintenance and repair kits are available.
- Temperature range -40 °F (-40 °C) to +212 °F (+100 °C)

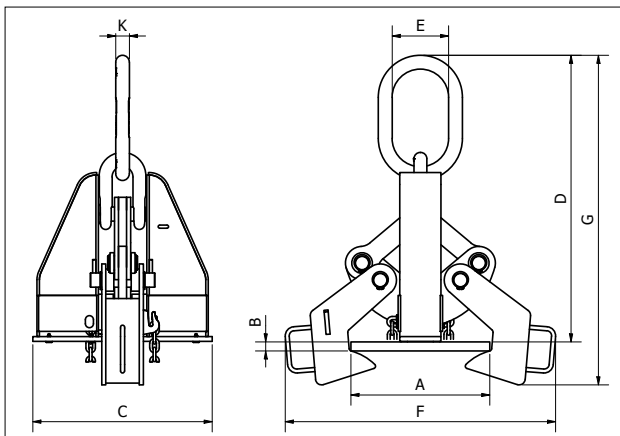
Model IPBCNS



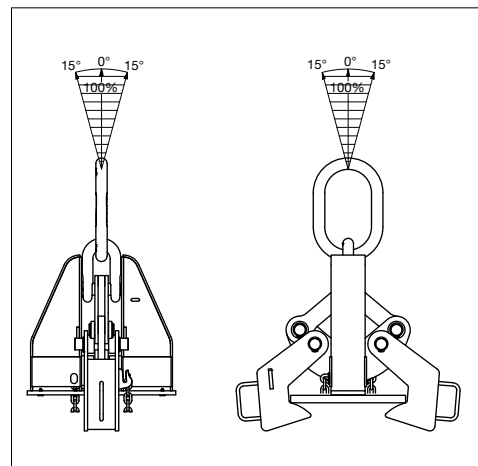
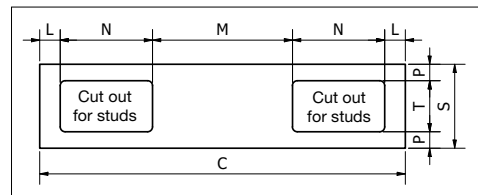
Model	Working Load Limit (t)*	Stock No.	Weight Each (lb)	Flange Grip Range (in)		Dimensions (in)						Maintenance Kit Stock No.
				Width A	Thickness B	C	D	E	F	G	K	
IPBCNS	13.5	2702018	137.0	Jul-17	0.5 - 2	17.5	30.5 - 23.3	5.50	19.9 - 29.5	35.2 - 28.3	1.33	2729610
IPBCNS	22.5	2702036	291.0	16 - 24	1-3	23.5	39.8 - 32.0	6.00	30.5 - 38.1	44.9 - 38.7	1.75	2729610
IPBCNS	32	2702054	529.0	16 - 36	1.63 - 4	28.7	46.8 - 40.3	7.00	31.2 - 53.1	57.4 - 49.5	2.00	2729610

*Design factor based on EN 13155 and ASME B30.20.

NOTE: Control the beam at all times. Beams should be gripped as near the center as possible. Snubbing lines at each end must be used to control excessive twisting or swinging, and to guide the beam to its proper place. Each lifting situation may have a specific demand which should be addressed before lifting.



Base Stock No.	Base Dimensions (in)						
	C	L	M	N	P	S	T
2702018	17.50	1.00	6.70	4.40	0.78	4.00	2.44
2702036	23.50	1.30	7.48	6.70	1.19	6.00	3.62
2702054	28.70	1.90	8.90	8.00	1.19	6.00	3.62

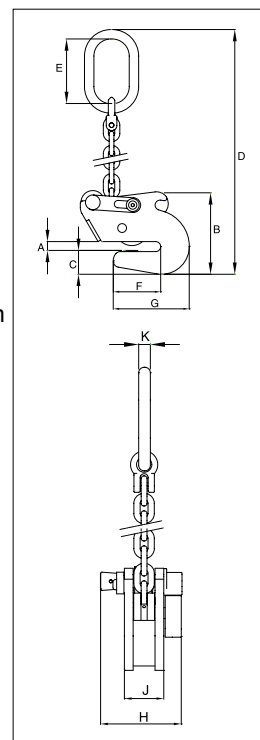


IPSTARTEC11

For lifting, transferring and controlled tilting of steel beams



- Available in capacities of 1.5 and 2.5 metric tons.
- Jaw openings available: .25" to .75".
- Welded alloy steel body for strength and smaller size. Forged alloy, components where required.
- Equipped with handle for easy placement.
- Individually Proof Tested to 2 times the Working Load Limit with certification.
- Crosby IP logo, Working Load Limit and jaw opening permanently stamped on body.
- Each product is individually serialized, with the serial number and Proof Load test date stamped on body. User manual with test certificate is included with each clamp.
- Maintenance replacement parts are available.
- Temperature range -40 °F (-40 °C) to +212 °F (+100 °C)

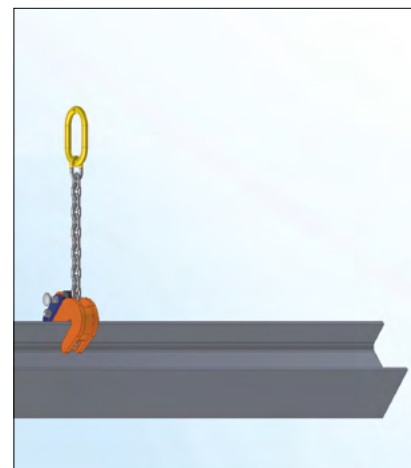
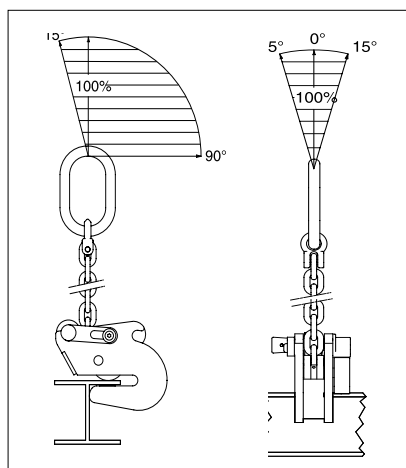


Model IPSTARTEC11

CE Load Rated

Model	Working Load Limit (t)*	Stock No.	Weight Each (lb)	Dimensions (in)										Maintenance Kit Stock No.
				Jaw A	B	C	D	E	F	G	H	J	K	
IPSTARTEC11	1.5	2701812	14.6	0.25 - 0.50	5.51	1.54	22.64	4.33	3.19	5.08	4.96	2.13	0.63	2715494
IPSTARTEC11	2.5	2701822	32.0	0.25 - 0.75	8.27	2.17	28.54	5.31	4.53	7.17	5.51	2.91	0.71	2715495

*Design Factor based on EN 13155 and ASME B30.20.



IPSC10



Suitable for use in positioning & turning steel plates and sections. Not to be used as a lifting clamp

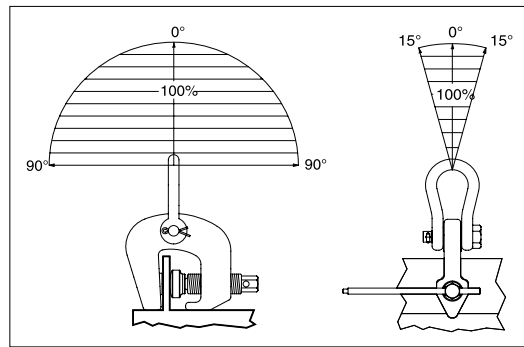
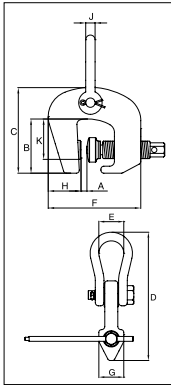
- Available in capacities of 1.5 and 3 metric tons.
- Jaw openings available: 0" to 2.38".
- Suitable for steel with a surface hardness up to 30 Rc.
- Forged alloy steel body for strength and smaller size. Forged alloy components, where required.
- Individually Proof Tested to 2 times the Working Load Limit with certification.
- Crosby IP logo, Working Load Limit and jaw opening permanently stamped on body.
- Each product is individually serialized, with the serial number and Proof Load test date stamped on body. User manual with test certificate is included with each clamp.
- Manufactured by an ISO 9001 facility.
- Temperature range -40 °F (-40 °C) to +212 °F (+100 °C)

Model IPSC10



Model	Working Load Limit (t)*	Stock No.	Weight Each (lb)	Dimensions (in)										Maintenance Kit Stock No.
				Jaw A	B	C	D	E	F	G	H	J	K	
IPSC10	1.5	2703857	10.1	0 - 1.57	3.58	5.63	9.88	1.73	6.14	1.97	1.77	0.63	2.56	2715492
IPSC10	3	2703858	18.5	0 - 2.38	4.29	6.89	12.2	2.01	7.87	2.44	2.17	0.75	3.27	2715493

*Design Factor based on EN 13155 and ASME B30.20.

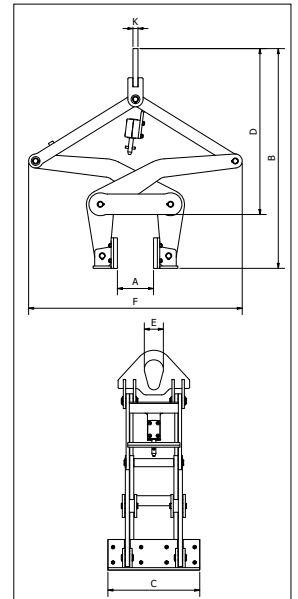


IPBG



The CrosbyIP Barrier Grab provides a fast and efficient method for handling road barriers.

- Hands-free operation.
- Welded alloy steel construction for strength and smaller size.
- Comes equipped with polyurethane pads. (Replacement kits are available.)
- Individually Proof Tested to 2 times the Working Load Limit with certification.
- Crosby IP logo, Working Load Limit and jaw opening permanently stamped on body.
- Each product is individually serialized, with the serial number and Proof Load test date stamped on body. User manual with test certificate is included with each clamp.
- Temperature range -4 °F (-20 °C) to +158 °F (+70 °C)



Model IPBG



Model	Working Load Limit (t)*	Stock No.	Weight Each (lb)	Dimensions (in)							Maintenance Kit Stock No.
				Jaw A	B	C	D	E	F	K	
IPBG	4	2704018	345.0	6 - 12	45.30 - 33.90	18.0	34.70 - 23.50	3.74	40.9 - 44.4	1.00	2729615

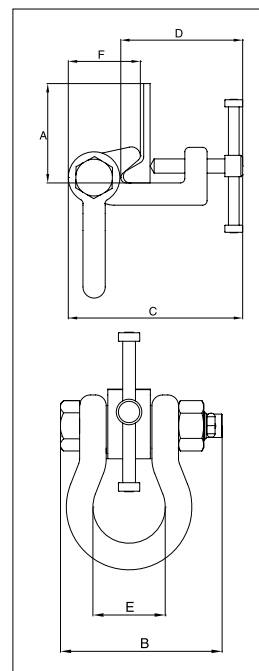
*Design factor based on EN13155 and ASME B30.20.

IPBTO10



For use as a temporary tackle eye in spaces that have been reinforced with HP (bulb) profiles such as engine rooms and shipsections

- Available in capacities of 1.5 through 6 metric tons (higher Working Load Limits are available upon request).
- Wide variety of jaw openings available: HP 6.5" to HP 17".
- Alloy steel body for strength and smaller size. Forged alloy components, where required.
- Individually Proof Tested to 2 times the Working Load Limit with certification.
- Crosby IP logo, Working Load Limit and jaw opening permanently stamped on body.
- Each product is individually serialized, with the serial number and Proof Load test date stamped on body. User manual with test certificate is included with each clamp.
- Maintenance and repair kits are available.
- Temperature range -40 °F (-40 °C) to +212 °F (+100 °C)

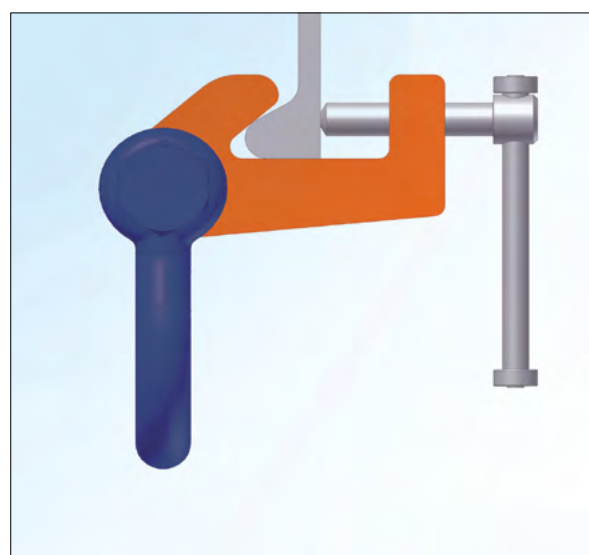
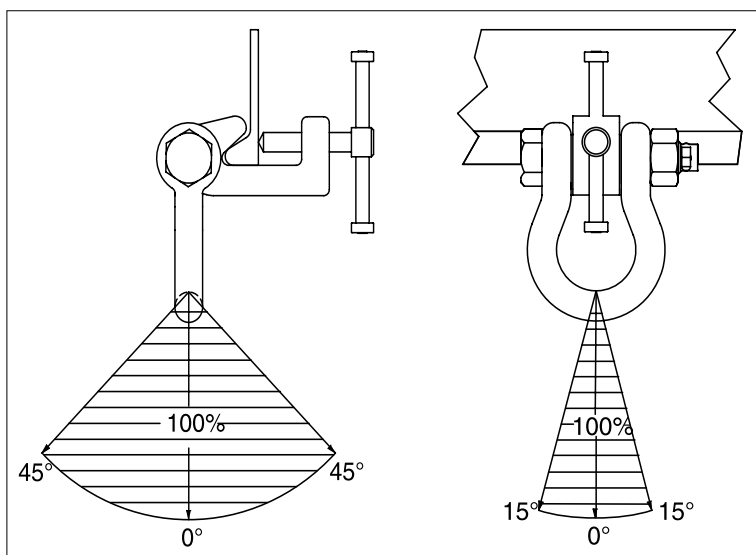


Model IPBTO10



Model	Working Load Limit (t)*	Stock No.	Weight Each (lb)	Dimensions (in)					
				Profile A †	B	C	D	E	F
IPBTO10	1.5	2700980	11.0	HP 6.5 - 9.44	5.39	7.40-8.23	5.08-5.91	2.68	3.19
IPBTO10	3	2700986	13.0	HP 9.44 - 12.56	5.39	7.40-8.54	5.71-6.85	2.68	3.07
IPBTO10	6	2700991	28.7	HP 11.75 - 17.00	7.28	10.03-11.69	7.68-9.29	3.23	4.02

*Design Factor based on EN 13155 and ASME B30.20. †Profile A is the type of Holland Bulb (HP) style and size material.

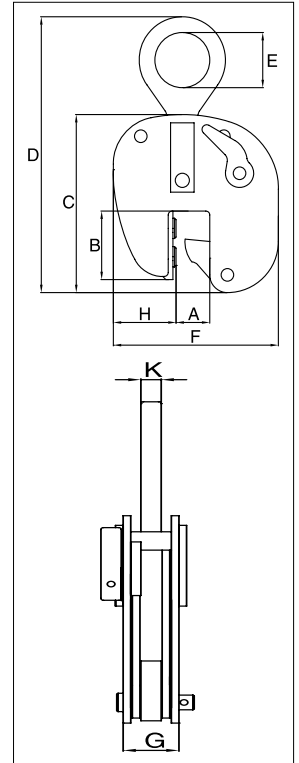




IPBUUZ

For lifting, transferring and placing bulb profiles onto ship's hulls perpendicularly

- Available in capacities of .75 through 3.75 metric tons (higher Working Load Limits are available upon request).
- Jaw openings available: HP 4.75" to HP 17".
- Welded alloy steel body for strength and smaller size. Forged alloy components, where required.
- Individually Proof Tested to 2 times the Working Load Limit with certification.
- Crosby IP logo, Working Load Limit and jaw opening permanently stamped on body.
- Each product is individually serialized, with the serial number and Proof Load test date stamped on body. User manual with test certificate is included with each clamp.
- Minimum WLL of 10% of maximum WLL.
- Maintenance and repair kits are available.
- Temperature range -40 °F (-40 °C) to +212 °F (+100 °C)



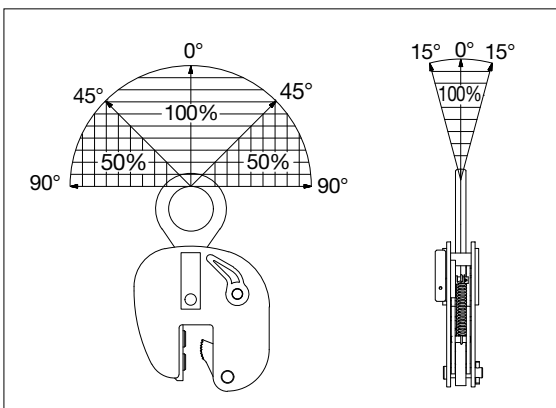
Model IPBUUZ: with Universal Hoisting Eye
Model IPBUZ: with Fixed Hoisting Eye



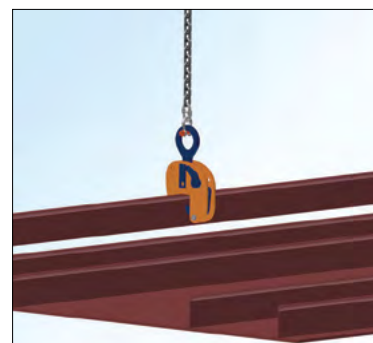
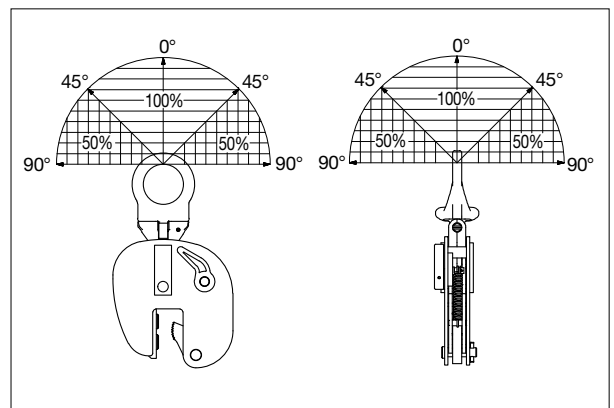
Model	Working Load Limit (t)*	Stock No.	Weight Each (lb)	Dimensions (in)									Maintenance Kit Stock No.
				Profile A †	B	C	D	E	F	G	H	K	
IPBUUZ	0.75	2705601	16.3	HP 4.75 - 7.88	3.35	8.90	15.35	2.76	8.27	2.40	2.76	0.63	2715480
With fixed hoisting eye													
IPBUZ	0.75	2705600	13.7	HP 4.75 - 7.88	3.35	8.90	15.35	2.76	8.27	2.40	2.76	0.63	2715480
IPBUZ	1.5	2705701	33.1	HP 8.63 - 17.00	7.72	15.63	22.36	2.76	10.08	2.72	1.89	0.63	2715481
IPBUZ	3.75	2705702	64.4	HP 8.63 - 17.00	9.37	17.24	22.24	3.15	13.98	2.52	3.94	0.79	2715482

* Design Factor based on EN 13155 and ASME B30.20. † Profile A is the type of Holland Bulb (HP) style and size material.

IPBUZ



IPBUUZ

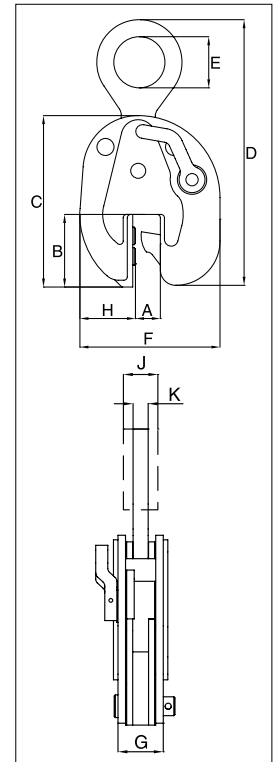


IPSBUUZ



For lifting, transferring and placing complete shipsections

- Available in capacities of 4.5 through 9 metric tons (higher Working Load Limits are available upon request).
- Wide variety of jaw openings available: HP 4" to HP 17".
- Welded alloy steel body for strength and smaller size. Forged alloy components, where required.
- Individually Proof Tested to 2 times the Working Load Limit with certification.
- Crosby IP logo, Working Load Limit and jaw opening permanently stamped on body.
- Each product is individually serialized, with the serial number and Proof Load test date stamped on body. User manual with test certificate is included with each clamp.
- Minimum WLL of 10% of maximum WLL.
- Maintenance and repair kits are available.
- Temperature range -40 °F (-40 °C) to +212 °F (+100 °C)

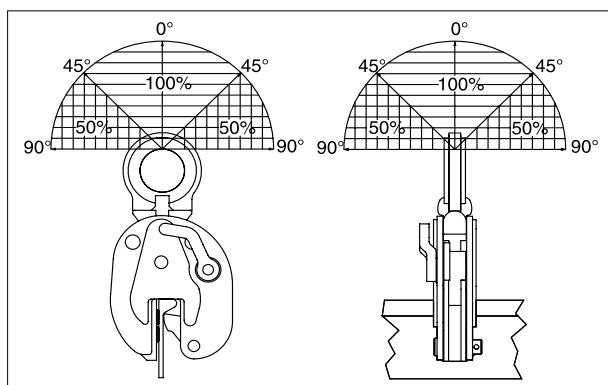


Model IPSBUUZ / IPSBUSUZ: With Universal Hoisting Eye



Model	Working Load Limit (t)*	Stock No.	Weight Each (lb)		Dimensions (in)										Maintenance
				Profile A †	B	C	D	E	F	G	H	J	K	Kit Stock No.	
IPSBUUZ	4.5	2705771	34.2	HP 4.00 - 6.25	4.21	9.92	17.72	2.95	8.11	3.78	3.23	1.42	0.79	2715484	
IPSBUUZ	9	2705773	94.8	HP 4.00 - 6.25	4.13	10.79	19.33	3.15	9.76	4.84	4.09	1.73	0.79	2715485	
IPSBUSUZ	4.5	2705772	83.8	HP 7.13 - 17.00	8.94	16.85	25.00	2.95	14.84	3.74	5.04	-	0.79	2715486	
IPSBUSUZ	9	2705774	152.0	HP 7.13 - 17.00	8.94	18.82	28.27	3.15	16.73	4.65	6.10	1.73	0.98	2715487	

*Design Factor based on EN 13155 and ASME B30.20. † Profile A is the type of Holland Bulb (HP) style and size material.

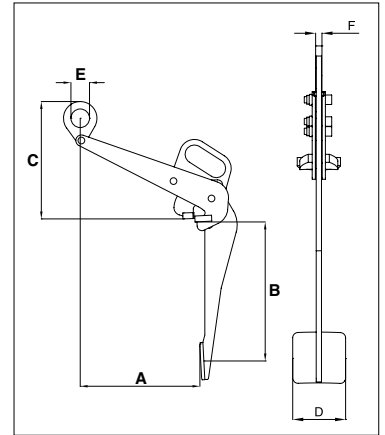


IPDV



Designed to lift, move and transfer 50-55 gallon drums with steel tops

- Available in capacity of .5 metric tons (higher Working Load Limits are available upon request).
- Jaw openings available: IPDV - 11.75" and IPVK - .63".
- Welded alloy steel body for strength and smaller size. Forged alloy components, where required.
- Individually Proof Tested to 2 times the Working Load Limit with certification.
- Crosby IP logo, Working Load Limit and jaw opening permanently stamped on body.
- Each product is individually serialized, with the serial number and Proof Load test date stamped on body. User manual with test certificate is included with each clamp
- Maintenance and repair kits are available.
- Temperature range -40 °F (-40 °C) to +212 °F (+100 °C)

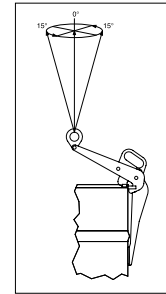


Model IPDV

CE Load Rated

Model	Working Load Limit (t)*	Stock No.	Weight Each (lb)	Dimensions (in)					
				Jaw A	B	C	D	E	F
IPDV	0.5	2700118	15.7	11.75	14.76	11.42	3.94	1.97	0.47

*Design Factor based on EN 13155 and ASME B30.20.



IPVK

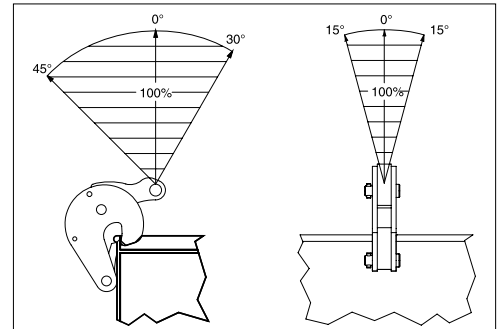
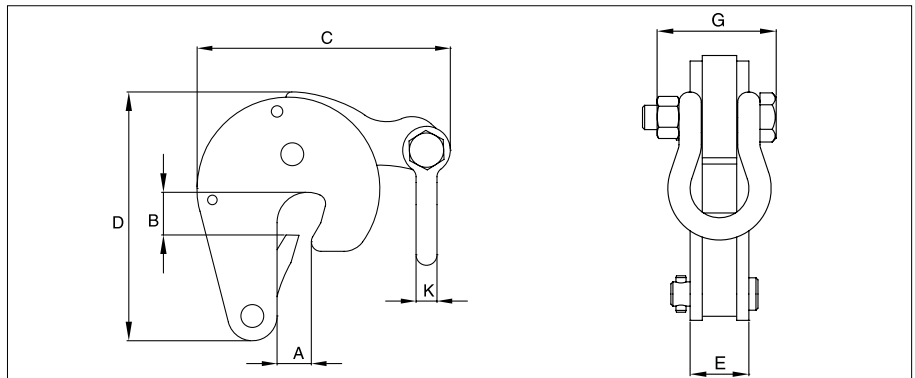


Model IPVK

CE Load Rated

Model	Working Load Limit (t)*	Stock No.	Weight Each (lb)	Dimensions (in)						
				Jaw A	B	C	D	E	G	K
IPVK	0.5	2700116	3.5	0 - 0.63	1.02	5.31	5.2	1.14	2.01	0.43

*Design Factor based on EN 13155 and ASME B30.20.

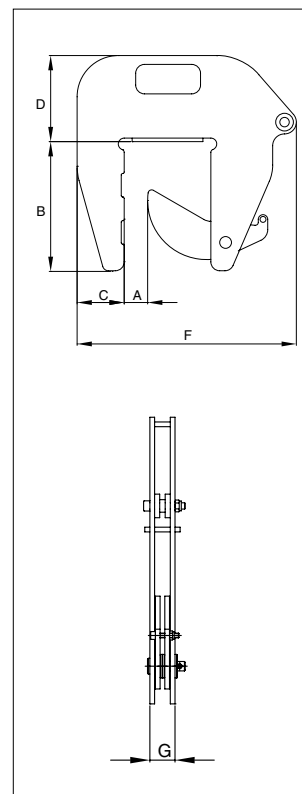


IPCC



For lifting and transferring concrete pipe sections and wells

- Available in capacity of 1 metric ton per pair.
- Jaw opening available: 1.56" - 5.50".
- Welded alloy steel body for strength and smaller size. Forged alloy, components where required.
- Equipped with handle for easy placement.
- Individually Proof Tested to 2 times the Working Load Limit with certification.
- Crosby IP logo, Working Load Limit and jaw opening permanently stamped on body.
- Each product is individually serialized, with the serial number and Proof Load test date stamped on body. User manual with test certificate is included with each clamp.
- Maintenance replacement parts are available.
- Temperature range -40 °F (-40 °C) to +212 °F (+100 °C)

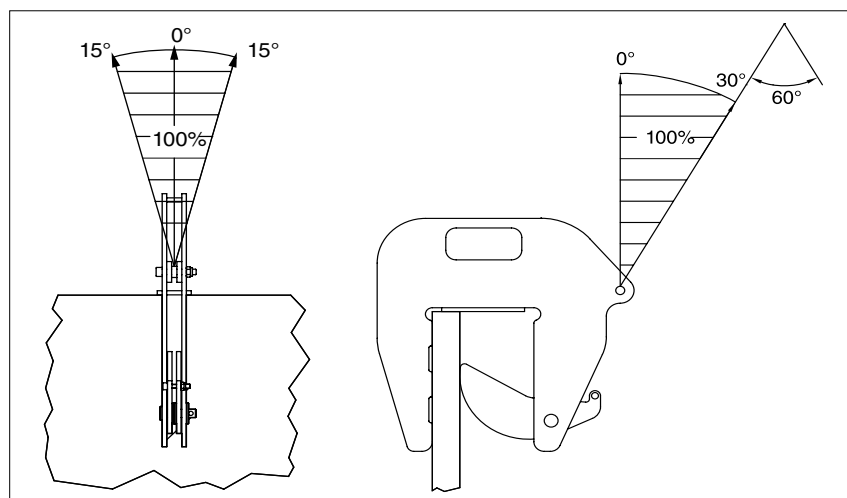


Model IPCC

CE Load Rated

Model	Working Load Limit per pair (t)*	Stock No.	Weight Each (lb)	Dimensions (in)					
				Jaw A	B	C	D	F	G
IPCC	1	2700037	20.3	1.56 - 5.50	8.86	3.15	5.75	14.65	1.46

*Design Factor based on EN 13155 and ASME B30.20.





The IPU10 vertical lifting clamp is used for lifting, turning, moving or vertical transfer of sheet, plates, or fabrications from horizontal to vertical and down to horizontal (180°) as needed. The hinged hoisting eye allows for the clamp to place and lift the load from any direction, or with a multiple leg sling without side-loading the clamp.



The IPNM10N vertical lifting clamp is used for lifting, turning, moving or vertical transfer of sheet, plates, or fabrications from horizontal to vertical and down to horizontal (180°) as needed without marring the surface of the material. Materials such as aluminum, stainless steel, painted materials, aircraft skins, composite material, glass, plastic, etc., can be lifted without marring. Will not mar, or scratch the material surface.



The IPNM10P vertical lifting clamp is used for lifting, turning, moving or vertical transfer of sheet, plates, or fabrications from horizontal to vertical and down to horizontal (180°) as needed without marring the surface of the material. Materials such as aluminum, stainless steel, painted materials, aircraft skins, composite material, glass, plastic, etc., can be lifted without marring. The protective cover reduces the risk of damage to surrounding plates. Will not mar, or scratch the material surface.



The IPU10A automatically clicks onto the material as soon as the clamp is placed on the plate. The fact that the safety lock remains in position as the clamp closes precludes hazardous situations. Fastening the IPU10A clamp in places that are difficult to reach is no problem.



The IPHNM10 horizontal lifting clamps have a pretension feature that allows the user to attach the clamps to the material for horizontal lifting and transfer of non-sagging material. To be used where material surface must not be damaged. These clamps must be used in pairs or more.



The IPH10 horizontal lifting clamps with spring loaded tension have a pretension feature that allows the user to attach the clamps to the material for horizontal lifting and transfer of non-sagging material. These clamps must be used in pairs or more.



The IPHOZ horizontal lifting clamp is to be used for lifting and transferring, in the horizontal position, of thin sheet and other materials that will sag or bend when lifted. These clamps must be used in pairs or more.



The IPPE10 type clamp is suitable for lifting and transferring bundles of non-bendable sheets of metal in a horizontal position. The jaw opening can be easily adjusted for the height of the bundle or plate. The IPPE10 has magnets in the footplate. This allows one person to operate multiple clamps at the same time when lifting loads. These clamps must be used in pairs or more.



The IPPE10NM lifting clamps may be used for virtually all applications, where the objects that are to be lifted or transported require optimal protection against surface damage. This also applies to materials with a very smooth surface, composites, plates with a protective cover or hard surface plates. These clamps have to be used in pairs.



The IPBC horizontal lifting clamps have a pretension feature that allows the user to attach the clamps to the material for horizontal lifting and transfer of sagging and non-sagging material. These clamps may also be used to handle material that will be used in shears, bending and rolling machines or other fabrication equipment. May also be used for turning beams from the "H" into the "I" position.



The IPHGZ, IPHGUZ horizontal lifting clamps have a pretension locking feature that allows the user to attach the clamps to the material for horizontal lifting and transfer of sagging and non-sagging material. These clamps may also be used to handle material that will be used in shears, bending and rolling machines or other fabrication equipment. May also be used to move and lift structural shapes such as I-Beams, H-beams etc.



The IPBK10 beam clamp is used for lifting, transferring and stacking H-Beams. A ring-center hoist eye allows for the beam flange to remain vertical. This series of clamps can be used in vertical and horizontal moving, transferring and stacking of different types of structural designs, such as H-Beams, angles, etc, depending on the application desired.



The IPBHZ beam clamp is used for lifting, transferring and stacking I-Beams & H-Beams. An ring-center hoist eye allows for the beam flange to remain vertical. This series of clamps can be used in vertical and horizontal moving, transferring and stacking of different types of structural designs, such as H-Beams, angles, etc, depending on the application desired.



The IPTK & IPTKW series beam clamp is suitable for use as a temporary tackle eye for a beam.



The IPTKU beam clamp has an improved hinged hoisting eye that increases the loading angles and the IPTKUD adds a double locking device to this clamp.



The IPSTARTEC11 beam clamp has been specially developed for lifting with the body in vertical position, controlled tilting, transportation and stacking of steel "H" and "I" profiles. By placing the chain guide in the appropriate position, it is easy to switch from lifting to tilting and back again, which shifts the center of gravity.



The IPDV drum clamp is for vertical lift and transfer. Allows drum to remain in an upright position during the lift and transfer using one clamp.



The IPVK drum clamp is for vertical lift and transfer. Automatically locks on drum, and can be used alone or in pairs.



The IPCC is suitable for the vertical lifting and transfer of concrete pipe sections and wells. Very easy application and removal of the clamp thanks to the built-in carrying-grips. Normally used in combination with 7mm chain (not supplied). These clamps must be used in pairs or more.



The IPSC10 screw style clamp is for positioning, pulling and turning plates or fabrications.



The IPBTO10 shipbuilding clamp is used as a temporary tackle eye in spaces which have been reinforced with HP (bulb) profiles such as engine rooms and shipsections. This clamp is fitted with a screwed spindle for easy attachment of the clamp. The moment a load is applied, the clamp is automatically fixed.



The IPBUUZ shipbuilding clamps are used for lifting, transferring and placing bulb profiles onto ship's hulls perpendicularly. These clamps are fitted with a locking device for both open and closed positions, which ensures complete reliability. They are to be used exclusively for bulb profiles (not for plates).



The IPSBU(U)Z shipbuilding clamps are used for the lifting, transfer and placing of complete shipsections. These clamps are fitted with a locking device for both open and closed positions, which ensures complete reliability. They are to be used exclusively for bulb profiles (not for plates).



Kito Crosby is the global leader of the lifting and securement industry it pioneered, and for which it continues to set the quality standard. With global engineering, manufacturing, distribution, and operations, the company provides a broad range of products and solutions for the most demanding applications.

Kito Crosby's people, products, solutions, and services have innovated the lifting and securement industry for more than 260 years.

Together we lift and secure the world today, for a safer, stronger, and more productive tomorrow. Our iconic brands include Kito, Crosby, Harrington, Gunnebo Industries, and Peerless.

kitocrosby.com

