



Overhead Power Line Construction

Crosby®

HARRINGTON®
HOISTS AND CRANES



GUNNEBO®
Industries

 **KITO CROSBY™**



Tough working environments require solutions you can trust

Kito Crosby specializes in equipment used for installing, maintaining, and repairing power lines, including high-voltage transmission and distribution lines. Our products help with lifting, pulling, or tensioning cables, tools, or other materials during power line operations.

- Harrington® LB lever hoists for lifting, pulling, and tensioning
- Crosby Straightpoint® COLT and BOLT tensiometers for measuring cable line tension
- Crosby Straightpoint® SID and RLP for load monitoring
- Crosby® shackles for lifting and rigging
- Gunnebo Industries® lifting points for lifting and rigging

Working on overhead power lines involves significant risks due to the high voltage and physical hazards. Our leading products combine first-class innovative features and are trusted for precise work in heavy conditions.



Raise your world

We help elevate our customers, employees, channel partners, and our industry.

Reliability

Our customers depend on us

Accountability

We are responsible for our actions and results – we are owners

Innovation

We not only set the standard, we continuously elevate it

Safety

Our #1 priority - there is no room for error when people's lives are at risk

Excellence

Quality is evident in everything we do, design, manufacture, and touch

Benefits of a vertically integrated supply chain

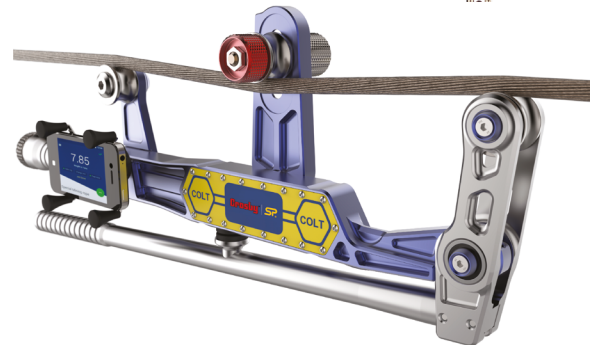
- In-house manufacturing controls the process from raw materials to finished goods, ensuring a high level of quality and consistency due to multiple inspections
- Responsibility of quality and safety as a single owner
- Most direct line to the manufacturer
- Fewest hand-offs
- Highest level of accountability

Product reliability & quality

- Every single product is designed to the highest safety standards
- Solid and consistent quality processes with traceability on all products and a thorough testing regime, including proof loading and fatigue testing
- All critical processes performed in-house

Customer support

- Extensive local inventory and expertise
- Unrivalled worldwide support, with decades of combined experience in the rigging and material handling industry



**LB LEVER HOIST****3/4, 1, 1 1/2, 2, 2 3/4, 3, 6, & 9 Ton capacity**

The Harrington LB Series of lever hoists offers a low headroom, compact design that is perfect for use in tight quarters. Regarded as the best lever hoist in the industry, our LB is recommended for use in heavy-duty power line construction work and day-to-day maintenance and repair.

- Rugged, all-steel construction that actually weighs less than comparable aluminum models.
- Get positive braking action with Weston-style load braking incorporating two moisture-resistant brake pads with four braking surfaces. Includes two brake pawls for additional reliability.
- Enjoy protection against dirt and moisture with a totally enclosed brake mechanism.
- Ensure long life with machined, heat-treated, split load double reduction gears.
- Operate in close quarters with short steel handle and 15-degree recovery strokes.
- Patented spring-loaded freewheel mechanism permits easy adjustment of the load chain and safeguards against accidental freewheeling under load.
- Equipped with standard rubber grip for non-slip operation.
- Powder-coated body is resistant to corrosion, chipping, fading and wear.

Capabilities to count on:

- 5-foot lift is standard, 10-, 15- and 20-foot lifts also stocked; nonstandard lifts available as well.
- Grade 100 heat-treated load chain is nickel-plated for corrosion resistance.
- Forged and heat-treated alloy steel hooks open slowly without fracturing under excessive loads. Top and bottom hooks rotate 360°.
- Test certificate verifies that every hoist has been factory load tested to 125% of rated capacity, in accordance with ASME B30.21 requirements.





LB LEVER HOIST

Slip Clutch 3/4, 1 1/2, 2 3/4, 3, & 6 Ton capacity



Slip Clutch

The slip clutch device on Harrington LB lever hoists prevents the hoist from being used to lift damaging loads beyond rated capacity. This factory-installed slip clutch is available on 3/4, 1 1/2, 2 3/4, 3, and 6 Ton capacities. Hoists with the slip clutch are clearly marked and the free knob is black in color to easily identify the installation of this option.

Load Limit Warning Handle

An LB lever hoist equipped with a load limit warning handle alerts the operator when the hoist is being used to lift damaging loads beyond rated capacity.

The load limit warning handle signals the operator in three ways:

- Sight: The green signal changes to red.
- Feel: The load handle deflects 15-degrees.
- Sound: The handle emits a click when deflected.



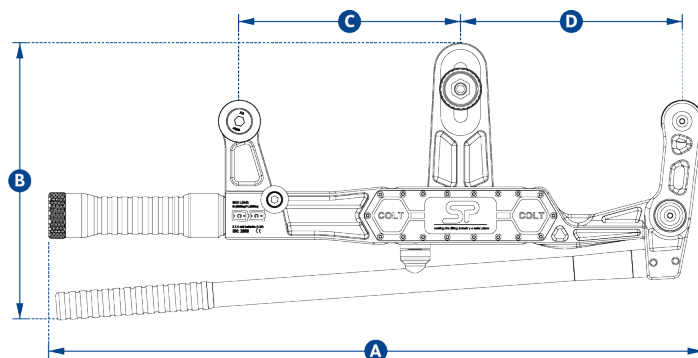
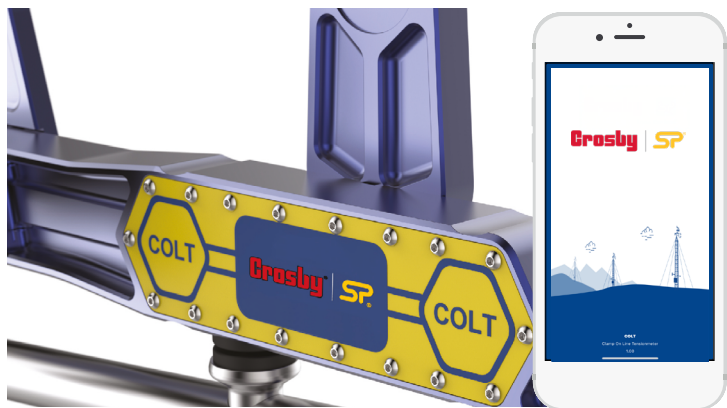
Cap. (Tons)	Product Code	Headroom C (in)	Std. Lift (ft)	Pull to Lift Load* (lbs)	Load Chain Diameter (mm) x Chain Fall Lines	Net Weight (lbs)	Shipping Weight Approx. (lbs)	Weight for Additional One Foot of Lift (lbs)
3/4	LB008	11.0	5	54 (36)	5.6 x 1	13	14	0.5
1	LB010	11.8	5	72 (46)	5.6 x 1	13	14	0.5
1 1/2	LB015	13.2	5	64 (45)	7.1 x 1	18	19	0.7
2	LB020	14.8	5	59 (42)	8.8 x 1	25	26	1.1
2 3/4	LB028	14.8	5	81 (57)	8.8 x 1	25	26	1.1
3	LB030	15.6	5	69	10.0 x 1	33	35	1.5
6	LB060	21.3	5	72	10.0 x 2	58	60	3.2
9	LB090	26.8	5	78	10.0 x 3	89	93	4.7

*Figures in parentheses are for hoists with the optional load limit warning handle.



BLUETOOTH WIRELESS TENSIONMETER

Max load 5,000kgf



STRAIGHTPOINT COLT WIRE ROPE TENSIONMETER

- Bluetooth portable solution for measuring tension on cables *
- Infinite wire rope database
- +/- 0.3% of full scale high accuracy
- Communication Bluetooth 4.2
- Protection IP65 / NEMA 4X
- Operating temperature 14 to 122° F

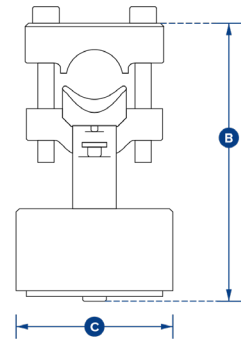
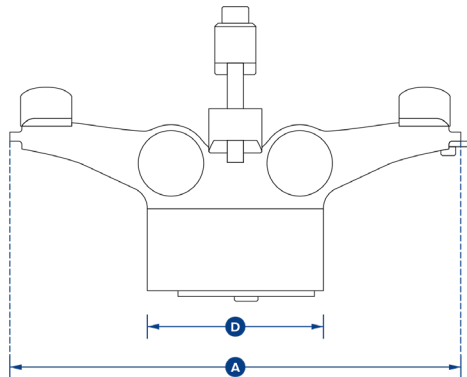
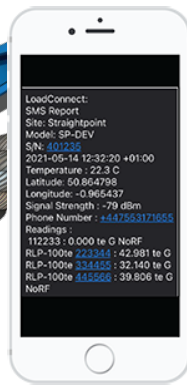
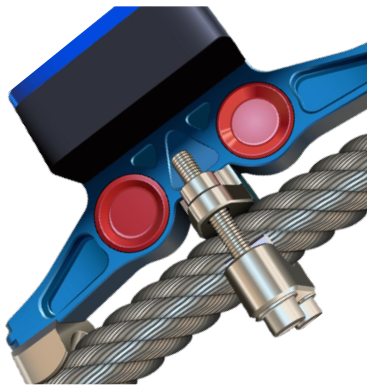
* Free Android/iOS App required

Model / Part	COLT5T / 2789000
Max load	11,000 lbf
Resolution	20 lb
Units	kg, lb, tonne and kN
Min wire rope ø	3/16"
Max wire rope ø	1"
Max line reduction	7/32" with ø 3/8 in wire rope
Wire rope database	Infinite via Android or iOS app
Weight	7.7lb
Battery Type	2 x 'C' cell batteries / 1000 hours
Accuracy	+/- 3% of full scale if wire rope ø & construction known
Communication	Bluetooth 4.2
Dimension A	23.2"
Dimension B	10"
Dimension C	7.9"
Dimension D	7.9"



PERMANENT WIRELESS TENSIONMETER

Max load 10,000kgf



STRAIGHTPOINT BOLT WIRE ROPE TENSIONMETER

WITH LOADCONNECT SOFTWARE

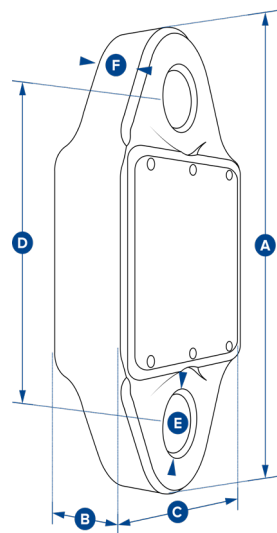
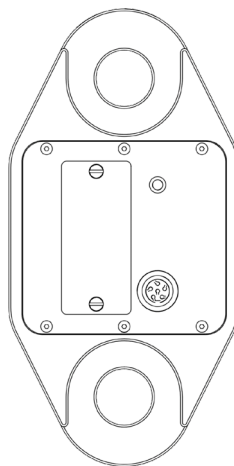
- Permanent solution for measuring tension on cables *
- 6:1 Design Factor
- +/- 0.2% of full scale high accuracy
- Overload counter
- 90db Audible set point alarm
- RS-485 serial output
- Protection IP65 / NEMA 4X
- Operating temperature 14 to 122° F
- Design validated by FEA

* Basestation, mobile and micro SIM card required

Part	BOLT10T / 2789573
Max load	22,000 lbf
Resolution	20 lb
Units	kg, lb, tonne and kN
Min wire rope ø	5/8"
Max wire rope ø	1.25"
Weight	4.6 lb
On Board Battery Type	4 x AA cell batteries
Operating temperature	-13F to 158°F
Protection	IP67/NEMA6
Accuracy	Typically +/- 3%
Communication	2.4 GHz
Dimension A	10.20"
Dimension B	6.26"
Dimension C	3.50"



**SELF INDICATING
6.5t load capacity**



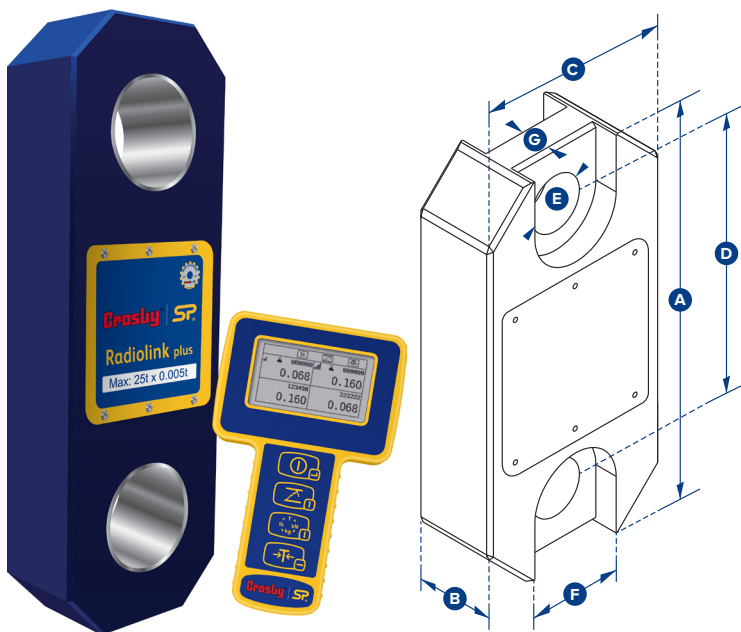
STRAIGHTPOINT SELF-INDICATING DYNAMOMETER 6.5t

- Large 1" / 25mm LCD display
- 6:1 Safety Factor
- +/- 0.2% of full scale high accuracy
- Overload counter
- 90db Audible set point alarm
- 9v PP3 Battery / 80 hours continuous
- RS-485 serial output
- Protection IP65 / NEMA 4X
- Operating temperature 14 to 122° F
- Design validated by FEA

Model / Part	SID6T5 / 2789709
Capacity	14,300 lb
Resolution	2 lb
Weight	3.3 lb
Battery Type	9v PP3 / 80 hours continuous
Dimension A	8.82"
Dimension B	1.73"
Dimension C	4.45"
Dimension D	6.14"
Dimension ØE	1.08"
Dimension F	1.3"
Crosby Shackle	G2130
Loading Pin Ø	1"



WIRELESS LOAD MONITORING 1t - 25t load capacity



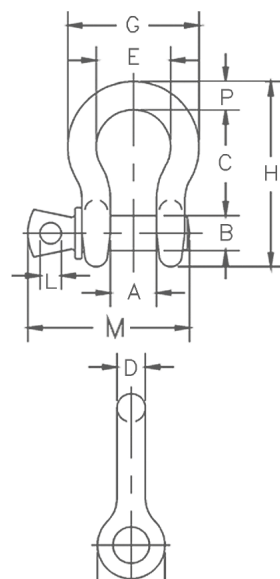
Model/Part	RLP1T 2789084	RLP2T 52789089	RLP6T5 2789094	RLP12T 2789082	RLP25T 2789088
Capacity *	2,200 lb	5,500 lb	14,300 lb	26,000 lb	55,000 lb
Resolution	1 lb	2 lb	2 lb	5 lb	10 lb
Units	lb	lb	lb	lb	lb
Weight	3.3 lb	3.3 lb	5.3 lb	8.2 lb	11 lb
Safety Factor	12.1	7:1	7:1	7:1	5:1
Dimension A	8.03 "	8.03 "	9.80 "	12.01 "	13.39 "
Dimension B	1.69 "	1.69 "	1.69 "	1.85 "	2.36 "
Dimension C	4.09 "	4.09 "	4.45 "	4.45 "	4.53 "
Dimension D	5.75 "	5.75 "	6.50 "	7.60 "	8.46 "
Dimension ØE	0.96 "	0.96 "	1.50 "	1.87 "	2.17 "
Dimension F	1.89 "	1.89 "	2.60 "	N/A	
Dimension G	0.75 "	0.75 "	1.26 "		
Crosby Shackle	G2130				
Loading Pin Ø	3/4 in	3/4 in	1 in	1 3/8 in	2 in

STRAIGHTPOINT WIRELESS LOADCELL 1t - 25t

- Proprietary 2.4 GHz Wireless
- Wireless Range of 3280ft
- +/- 0.1% of full scale high accuracy
- Data rate 3Hz - up to 200Hz available
- Overload counter
- 90db Audible overload alarm
- Internal Antennae
- Protection IP67/NEMA6
- Operating temperature 14 to 122° F
- Display - 240x128 multi-line dot matrix with backlight
- Design validated by F.E.A.



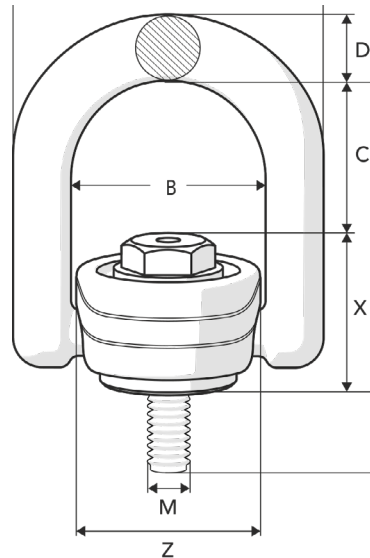
G-209 SHACKLE



Size * (in)	Working Load Limit (t)	Stock No. G-209		Dimensions (in)												Toler- ance	
				A	B	C	D	E	F	G	H	L	M	P	C	A	
3/8	1	1018419	0.31	0.66	0.44	1.45	0.38	1.03	0.92	1.79	2.5	0.25	2.06	0.38	0.13	0.06	
7/16	1.5	1018437	0.38	0.75	0.5	1.69	0.44	1.16	1.06	2.04	2.91	0.31	2.37	0.44	0.13	0.06	
1/2	2	1018455	0.72	0.81	0.62	1.88	0.5	1.31	1.18	2.31	3.28	0.38	2.69	0.5	0.13	0.06	
5/8	3.25	1018473	1.37	1.06	0.75	2.38	0.62	1.69	1.5	2.93	4.19	0.44	3.34	0.69	0.13	0.06	
3/4	4.75	1018491	2.35	1.25	0.88	2.81	0.75	2	1.81	3.5	4.97	0.5	3.97	0.81	0.25	0.06	
7/8	6.5	1018516	3.62	1.44	1	3.31	0.88	2.28	2.1	4.04	5.83	0.5	4.5	0.97	0.25	0.06	
1	8.5	1018534	5.03	1.69	1.12	3.76	1	2.69	2.38	4.69	6.56	0.56	5.13	1.06	0.25	0.06	
1-1/8	9.5	1018552	7.41	1.81	1.25	4.27	1.16	2.91	2.68	5.15	7.47	0.63	5.97	1.25	0.25	0.06	



ROTATING LIFTING POINT (RLP)



Art. no. Standard bolt length	L	Art.no. Long bolt length**	L2	Code	B	C	D	Dimensions in						
								L1	M	X	Y	Z		
Z101708	0.63	Z1017080L	3.98	RLP-M8 x 1.25	1.65	1.38	0.47	2.44	0.31	1.06	2.52	Ø1.57	0.66	
Z101710	0.63	Z1017100L	3.98	RLP-M10 x 1.5	1.65	1.38	0.47	2.44	0.39	1.06	2.52	Ø1.57	0.66	
Z101712	0.98	Z1017120L	4.72	RLP-M12 x 1.75	2.24	1.81	0.75	3.46	0.47	1.65	3.58	Ø2.13	2.2	
Z101716	0.98	Z1017160L	6.3	RLP-M16 x 2	2.24	1.81	0.75	3.46	0.63	1.65	3.58	Ø2.13	2.2	
Z101720	1.42	Z1017200L	7.87	RLP-M20 x 2.5	3.27	2.17	1.1	4.33	0.79	2.17	5.24	Ø3.15	6.39	
Z101724	1.42	Z1017240L	9.45	RLP-M24 x 3	3.27	2.17	1.1	4.33	0.94	2.17	5.24	Ø3.15	6.39	
Z101730	2.28	Z1017300L	11.81	RLP-M30 x 3.5	4.49	2.76	1.34	5.83	1.18	3.07	7.17	Ø4.37	15.65	
Z101736	2.28	Z1017360L	11.81	RLP-M36 x 4	4.49	2.76	1.34	5.83	1.42	3.07	7.17	Ø4.37	16.09	
Z101742	3.19	Z1017420L	11.85	RLP-M42 x 4.5	5.87	3.58	1.57	7.48	1.65	3.9	9.02	Ø5.59	31.53	
Z101748	3.19	Z1017480L	11.85	RLP-M48 x 5	5.87	3.58	1.57	7.48	1.89	3.9	9.02	Ø5.59	31.97	



Kito Crosby is the global leader of the lifting and securement industry it pioneered, and for which it continues to set the quality standard. With global engineering, manufacturing, distribution, and operations, the company provides a broad range of products and solutions for the most demanding applications. Kito Crosby's people, products, solutions, and services have innovated the lifting and securement industry for more than 260 years.

Together we lift and secure the world today, for a safer, stronger, and more productive tomorrow. Our iconic brands include Kito, Crosby, Harrington, Gunnebo Industries, and Peerless.

kitocrosby.com

