



# Overhead Power Line Construction

**KITO®**

**Crosby®**



**GUNNEBO®**  
Industries

 **KITO CROSBY™**





# Tough working environments require solutions you can trust

Kito Crosby specializes in equipment used for installing, maintaining, and repairing power lines, including high-voltage transmission and distribution lines. Our products help with lifting, pulling, or tensioning cables, tools, or other materials during power line operations.

- LB / LB-SL Lever Hoist - Lifting, Pulling & Tensioning
- COLT & BOLT Tensiometer - Measure cable line tension
- SID & RLP - Load Monitoring
- Shackles - Lifting & Rigging
- Lifting points - Lifting & Rigging

Working on overhead power lines involves significant risks due to the high voltage and physical hazards. Our products combine first-class innovative features and are perfect for precise work in heavy conditions.



## Raise your world

We help elevate our customers, employees, channel partners, and our industry.

### Reliability

Our customers depend on us

### Accountability

We are responsible for our actions and results – we are owners

### Innovation

We not only set the standard, we continuously elevate it

### Safety

Our #1 priority - there is no room for error when people's lives are at risk

### Excellence

Quality is evident in everything we do, design, manufacture, and touch

## Benefits of a vertically integrated supply chain

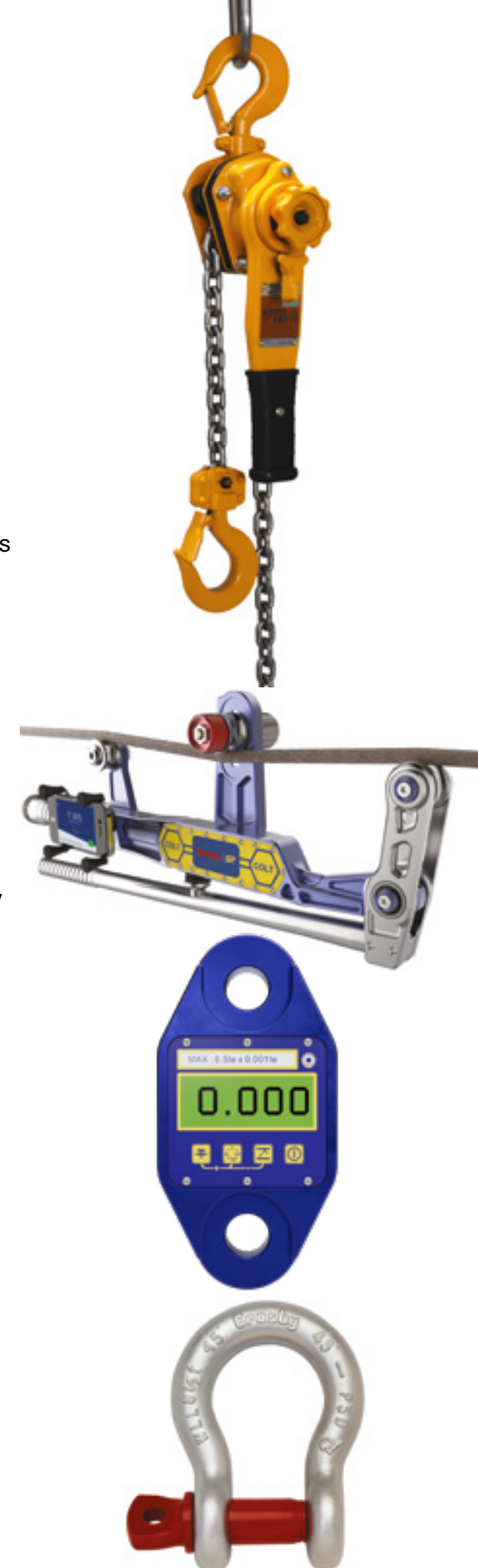
- In-house manufacturing controls the process from raw materials to finished goods, ensuring a high level of quality and consistency due to multiple inspections
- Responsibility of quality and safety as a single owner
- Most direct line to the manufacturer
- Fewest hand-offs
- Highest level of accountability

## Product reliability & quality

- Every single product is designed to the highest safety standards
- Solid and consistent quality processes with traceability on all products and a thorough testing regime including proof loading and fatigue testing
- All critical processes performed in-house

## Customer support

- Extensive local inventory and expertise
- Unrivalled worldwide customer support, with decades of combined experience in the rigging and material handling industry







**LB LEVER HOIST**  
800 kg up to 9,000 kg load capacity

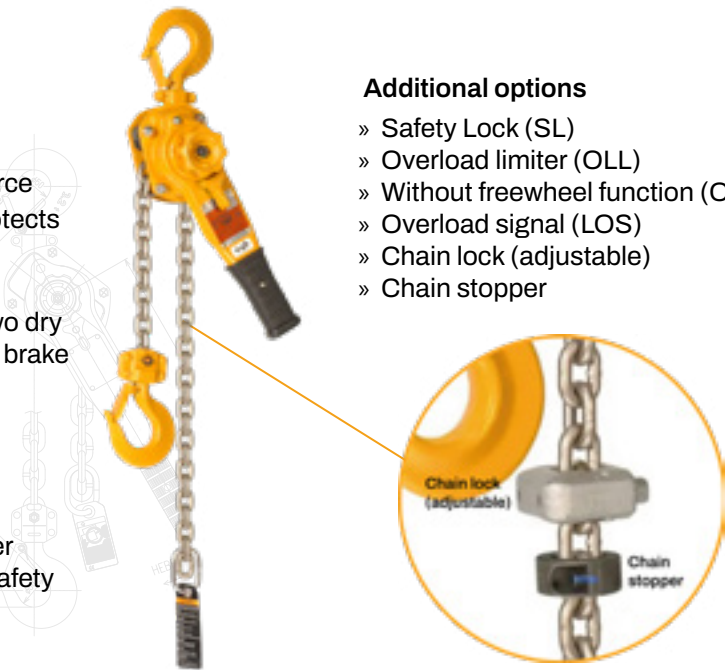
**LB-SL LEVER HOIST**  
1,600 kg up to 9,000 kg load capacity

FEATURES

- » Up to 9,000 kg load capacity
- » Fine-toothed precision gearing to reduce required force
- » Kito original freewheel function: 2-step activation protects against unintentional freewheeling under load
- » More robust and ergonomic lever
- » High-performance mechanical brake incorporates two dry brake pads to provide four braking surfaces, and two brake pawls to further enhance safety.
- » Nickel-plated load chain grade T, series V (G100) in accordance with standard EN 818-7

Maximum safety

The upper and lower hooks have a particularly large inner diameter and sufficient space for slings. The hook-eye safety latch with guided hook interlock on the upper and lower hooks prevents slings from slipping out unintentionally.



- Additional options**
- » Safety Lock (SL)
  - » Overload limiter (OLL)
  - » Without freewheel function (OF)
  - » Overload signal (LOS)
  - » Chain lock (adjustable)
  - » Chain stopper

Type	Load capacity	Lifting Height*	Hand-pull to lift full load	Load chain diameter	Chain Falls	Weight	Headroom C	Weight for additional 1m lift
	kg	m	kg	mm		kg	mm	kg
LB008	800	1.5	29	5.6 x 15.7	1	5.7	280	0.7
LB010	1,000	1.5	36	5.6 x 15.7	1	5.9	300	0.7
LB016	1,600	1.5	34	7.1 x 19.9	1	8.0	335	1.1
LB025	2,500	1.5	37	8.8 x 24.6	1	11.2	375	1.7
LB032	3,200	1.5	37	10.0 x 28.0	1	15.0	395	2.3
LB063	6,300	1.5	38	10.0 x 28.0	2	26.0	540	4.7
LB090	9,000	1.5	39	10.0 x 28.0	3	40.0	680	7.0

\*Additional lifting heights available

RELIABLE AND EXTRA SAFE

- » Additional Safety Locking Module
- » Complies with EN 13157
- » High-performance mechanical brake incorporates two dry brake pads to provide four braking surfaces, and two brake pawls to further enhance safety.
- » Modification Kit available: Existing LB series lever hoists can be modified\* with the SL Modification Kit (LB016/032/063/090)

\*The modification from LB to LB-SL is only possible through Kito certified distributors.

The load chain

- » Nickel-plated load chain grade T, series V (G100)
- » Minimum breaking strength 1,000 N/mm<sup>2</sup>
- » High strength, low wear and higher corrosion resistance

Unique hardening process

An advanced high-frequency heat treatment process provides special hardness on all major load-bearing parts. The process creates a robust hoist that can easily withstand any environment.

Type	Load capacity	Lifting Height*	Hand-pull to lift full load	Load chain diameter	Chain Falls	Weight	Headroom C	Weight for additional 1m lift
	kg	m	kg	mm		kg	mm	kg
LB-SL	1,600	1.5	29	7.1 x 19.9	1	8.5	335	1.1
LB-SL	3,200	1.5	34	10.0 x 28.0	1	15.6	395	2.3
LB-SL	6,300	1.5	37	10.0 x 28.0	2	26.6	540	4.7
LB-SL	9,000	1.5	39	10.0 x 28.0	3	40.6	680	7.0

\*Additional lifting heights available



**Safety Locking Module**  
The additional Safety Locking Module SL (Safety-Lock): Activated automatically in the unlikely event of a failure of the load pressure brake.

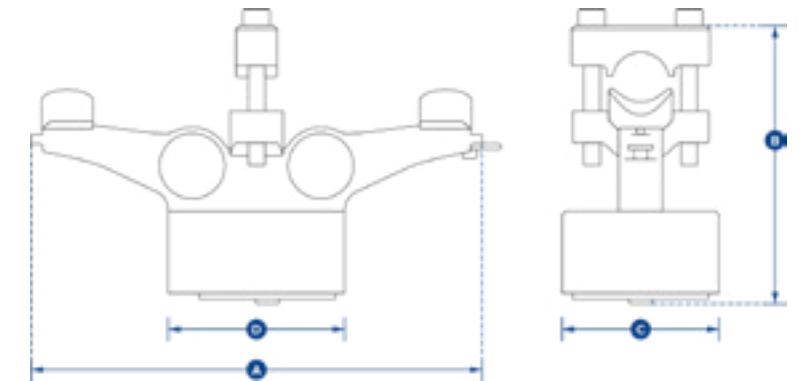
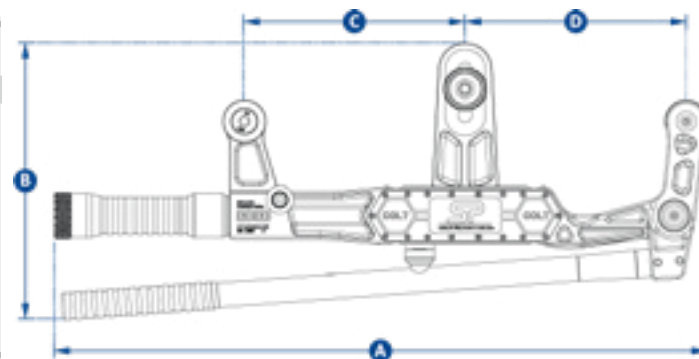






**BLUETOOTH WIRELESS TENSION METER**  
Max load 5,000kgf

**PERMANENT WIRELESS TENSION METER**  
Max load 10,000kgf



## COLT TENSION METER WIRE ROPE TENSION METER

- » Bluetooth portable solution for measuring tension on cables \*
- » Infinite wire rope database
- » +/- 0.3% of full scale high accuracy
- » Communication Bluetooth 4.2
- » Protection IP65 / NEMA 4X
- » Operating temperature -10 to +50° C

\* Free Android/iOS App required

Model / Part	COLT5T / 2789000
Max load	5,000 kgf
Resolution	10 kg
Units	kg, lb, tonne, and kN
Min wire rope ø	5 mm
Max wire rope ø	25 mm
Max line reduction	5 mm with ø 10 mm wire rope
Wire rope database	Infinite via Android or iOS app
Weight	3.5 kg
Battery Type	2 x 'C' cell batteries / 1000 hours
Accuracy	+/- 3% of full scale if wire rope ø & construction known
Communication	Bluetooth 4.2
Dimension A	589 mm
Dimension B	254 mm
Dimension C	200 mm
Dimension D	200 mm

## BOLT & LOADCONNECT WIRE ROPE TENSION METER

- » Permanent solution for measuring tension on cables \*
- » 6:1 Safety Factor
- » +/- 0.2% of full scale high accuracy
- » Overload counter
- » 90db Audible set point alarm
- » RS-485 serial output
- » Protection IP65 / NEMA 4X
- » Operating temperature -10 to +50° C
- » Design validated by F.E.A.

\* Basestation, mobile and micro SIM card required

Part	BOLT10T / 2789573
Max load	10,000 kgf
Resolution	0.01te
Units	kg, lb, tonne, and kN
Min wire rope ø	16 mm
Max wire rope ø	32 mm
Weight	2.1 kg
On Board Battery Type	4 x AA cell batteries
Operating temperature	-25 to +70° C / -13F to 158°F
Protection	IP67/NEMA6
Accuracy	Typically +/- 3%
Communication	2.4 GHz
Dimension A	259 mm
Dimension B	159 mm
Dimension C	89 mm





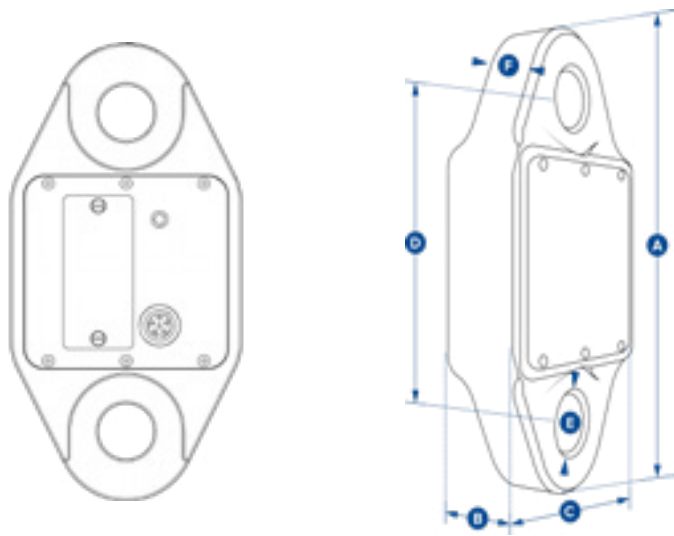
**SELF INDICATING**  
6.5t load capacity

**WIRELESS LOAD MONITORING**  
1t - 25t load capacity



**SELF INDICATING  
DYNAMOMETER 6.5t**

- » Large 1" / 25mm LCD display
- » 6:1 Safety Factor
- » +/- 0.2% of full scale high accuracy
- » Overload counter
- » 90db Audible set point alarm
- » 9v PP3 Battery / 80 hours continuous
- » RS-485 serial output
- » Protection IP65 / NEMA 4X
- » Operating temperature -10 to +50° C
- » Design validated by F.E.A.

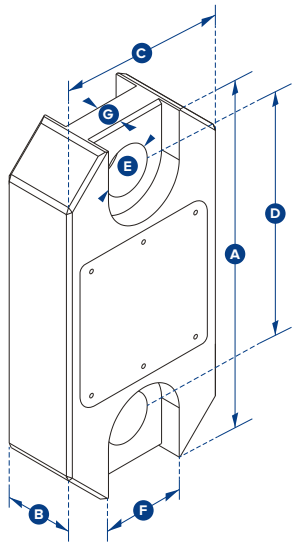


Model / Part	SID6T5 / 2789709
Capacity	6.5 te
Resoulution	0.001 te
Weight	1.5 kg
Battery Type	9v PP3 / 80 hours continuous
Dimension A	224 mm
Dimension B	44 mm
Dimension C	113 mm
Dimension D	156 mm
Dimension ØE	27.5 mm
Dimension F	33 mm
Crosby Shackle	G2130
Loading Pin Ø	25



**WIRELESS LOADCELL  
1t - 25t**

- » Proprietary 2.4 GHz Wireless
- » Wireless Range of 1000m/3280ft
- » +/- 0.1% of full scale high accuracy
- » Data rate 3Hz - up to 200Hz available
- » Overload counter
- » 90db Audible overload alarm
- » Internal Antennae
- » Protection IP67/NEMA6
- » Operating temperature -10 to +50° C
- » Display - 240x128 multi-line dot matrix with backlight
- » Design validated by F.E.A.



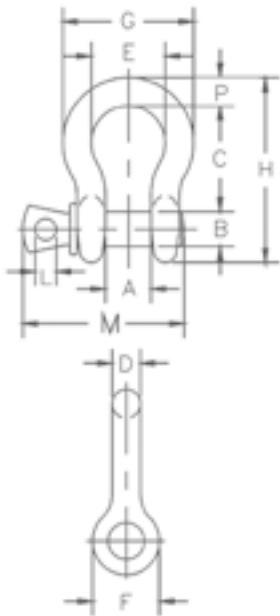
Model/Part	RLP1T 2789084	RLP2T 52789089	RLP6T5 2789094	RLP12T 2789082	RLP25T 2789088
Capacity *	1,000 kg	2.5 te	6.5 te	12 te	25 te
Resolution	0.5 kg	0.001 te	0.001 te	0.002te	0.005 te
Units	kg	te	te	te	te
Weight	1.5 kg	1.5 kg	2.4 kg	3.7 kg	5 kg
Safety Factor	12.1	7:1	7:1	7:1	5:1
Dimension A	204	204	249	305	340
Dimension B	43	43	43	47	60
Dimension C	104	104	113	113	115
Dimension D	146	146	165	193	215
Dimension ØE	24.5	24.5	38	47.5	55
Dimension F	48	48	65	N/A	
Dimension G	19	19	32		
Crosby Shackle	G2130				
Loading Pin Ø	19	19	25	35	51

\* Additional capacities are available



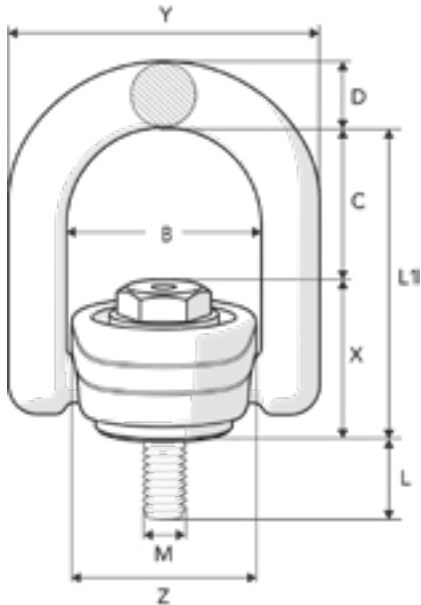
G209 SHACKLE

RLP ROTATING LIFTING POINT



Size * (in)	Working Load Limit (t)	Stock No. G-209	Weight Each (kg)	Dimensions (mm)													Tolerance (+/- mm)
				A	B	C	D	E	F	G	H	L	M	P	C	A	
3/8	1	1018419	0.14	16.8	11.2	36.8	9.7	26.2	23.4	45.5	63.5	6.4	52.3	9.7	3.30	1.50	
7/16	1.5	1018393	0.09	13.5	9.7	30.7	7.9	21.3	19.1	37.1	53.1	5.6	43.4	7.9	3.30	1.50	
1/2	2	1018455	0.33	20.6	15.7	47.8	12.7	33.3	30.0	58.7	83.3	9.7	68.3	12.7	3.30	1.50	
5/8	3.25	1018473	0.62	26.9	19.1	60.5	15.7	42.9	38.1	74.4	106	11.2	84.8	17.5	6.35	1.50	
3/4	4.75	1018491	1.07	31.8	22.4	71.4	19.1	50.8	46.0	88.9	126	12.7	101	20.6	6.35	1.50	
7/8	6.5	1018516	1.64	36.6	25.4	84.1	22.4	57.9	53.3	103	148	12.7	114	24.6	6.35	1.50	
1	8.5	1018534	2.28	42.9	28.4	95.5	25.4	68.3	60.5	119	167	14.2	130	26.9	6.35	1.50	
1-1/8	9.5	1018552	3.36	46	31.8	108	29.5	73.9	68.1	131	190	16	152	31.8	6.35	1.50	

\* Additional sizes are available



Art. no. Standard bolt length	L	Art.no. Long bolt length**	L2	Code	B	C	Dimensions mm							Y	Z	Weight kg***
							D	L1	M	X						
Z101708	16	Z1017080L	101	RLP-M8 x 1.25	42	35	12	62	8	27	64	Ø40	0.3			
Z101710	16	Z1017100L	101	RLP-M10 x 1.5	42	35	12	62	10	27	64	Ø40	0.3			
Z101712	25	Z1017120L	120	RLP-M12 x 1.75	57	46	19	88	12	42	91	Ø54	1.0			
Z101716	25	Z1017160L	160	RLP-M16 x 2	57	46	19	88	16	42	91	Ø54	1.0			
Z101720	36	Z1017200L	200	RLP-M20 x 2.5	83	55	28	110	20	55	133	Ø80	2.9			
Z101724	36	Z1017240L	240	RLP-M24 x 3	83	55	28	110	24	55	133	Ø80	2.9			
Z101730	58	Z1017300L	300	RLP-M30 x 3.5	114	70	34	148	30	78	182	Ø111	7.1			
Z101736	58	Z1017360L	300	RLP-M36 x 4	114	70	34	148	36	78	182	Ø111	7.3			
Z101742	81	Z1017420L	301	RLP-M42 x 4.5	149	91	40	190	42	99	229	Ø142	14.3			
Z101748	81	Z1017480L	301	RLP-M48 x 5	149	91	40	190	48	99	229	Ø142	14.5			





---

Kito Crosby is the global leader of the lifting and securement industry it pioneered, and for which it continues to set the quality standard. With global engineering, manufacturing, distribution, and operations, the company provides a broad range of products and solutions for the most demanding applications. Kito Crosby's people, products, solutions, and services have innovated the lifting and securement industry for more than 260 years.

Together we lift and secure the world today, for a safer, stronger, and more productive tomorrow. Our iconic brands include Kito, Crosby, Harrington, Gunnebo Industries, and Peerless.

[kitocrosby.com](http://kitocrosby.com)

---

