

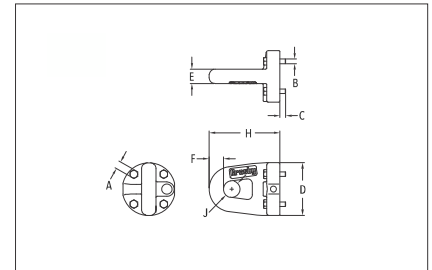
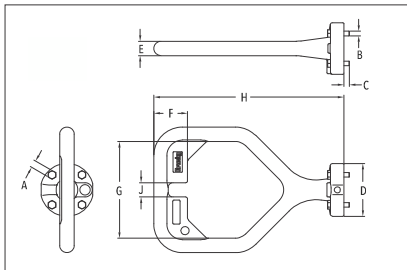
ROV Handles Options and Configurations



“D” Handle



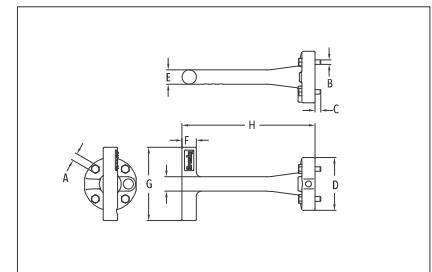
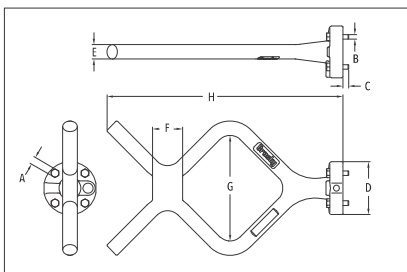
“Eye” Handle



“F” Handle



“T” Handle



- Capacities from 9-1/2t through 85t.
- Forged Steel, Quenched & Tempered, with alloy pins.
- Handles are stainless steel.
- Shackles and bolts are available in both “D” and “F” designs.
- Working Load Limit permanently shown on every shackle.
- **QUIC-CHECK®** deformation and angle indicators forged on the bow.
- All ROV shackle bows are galvanized, then painted fluorescent yellow.
- Handles are painted fluorescent orange.
- New Interchangeable handles on ROV shackle bolts.
- “D” and “F” handle kits available containing handle, retaining bolts and individual packet of Loctite® for easy installation.
- Handles are **RFID EQUIPPED**.
- Look for the Red Pin® . . . the mark of genuine Crosby quality.

NOTE: ROV Hooks available on page 130 and 131.

G-4210H ROV Handles

Handle Style	Stock No.	Weight Each (lbs.)	Dimensions (in)									
			A	B	C	D	E	F	G	H	J	K
D	1021324	10.0	10	6	7.4	31.8	19.1	44.5	128	251	19.1	*
F	1021315	11.1	10	6	7.4	31.8	19.1	39.6	140	312	*	*
T	1021306	5.4	10	6	7.4	31.8	19.1	19.1	97	176	*	19.1
Eye	1021333	4.7	10	6	7.4	31.8	19.1	19.1	*	93.7	21.8	*