

Proud to serve the following industries:

construction; container weighing; extreme sports; heavy lift;
line tensioning; logistics; marine; oil and gas; stage and event rigging;
shipping; testing; towage and salvage; utilities; defence; and more.

All products in stock

ATEX (Zones 0,1,2) available • Bluetooth® option • DNV GL type approved



Load Monitoring products



making the lifting industry a safer place



Crosby | Straightpoint

Unit 9, Dakota Park, Downley Road, Havant, Hampshire, PO9 2NJ UK · Tel: +44 (0)2392 484491
2801 Dawson Road, Tulsa, OK 74110 · USA · Tel: +1 (918) 834-4611

Part No: SU3903 - 9992532



know the load

For 40 years Straightpoint has manufactured and supplied cabled and telemetry digital dynamometers, compression load cells, crane scales, tension meters and software solutions as well as a range of intrinsically safe load cells.

RADIOLINK PLUS (RLP)

Typically used in lifting, pulling or load testing applications where high accuracy is required and operator safety at distance from the load are vital. The Radiolink plus is constructed of lightweight aircraft grade aluminium and features antennae free wireless technology with a range of 2300ft and a battery life of 1200 hours. Available from stock in capacities up to 500t the Radiolink plus is environmentally sealed to NEMA6 meaning it can be left as an intrinsic part of the rigging for the duration of any lift in the most arduous weather conditions. Supplied as standard with the SW-HHP multi-function handheld display the HHP also connects to the SP range of wireless software.

WIRELESS COMPRESSION (WNI)

The WNI range is available in capacities from 5t to super heavy lift loads in excess of 1500t. When large modules, structures, jackets or buildings via shoring columns need to be weighed or loads monitored the WNI range of load cells provides safe, accurate and wireless measurement back to the SP range of software that can be used to log weights and forces, calculate centre of gravity and even transmit loads to nearby smart phones. Antennae free wireless range of 2300ft allows the operator to work from a safe distance and yet monitor loads accurately at data speeds up to 200Hz.

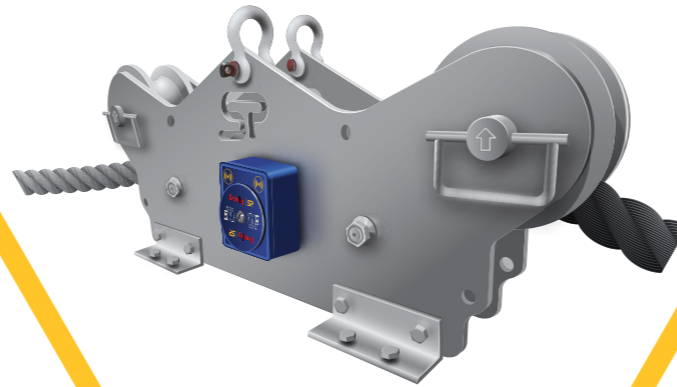
TENSION METER (COLT)

This lightweight wire rope tension meter provides fast and accurate measurement of cables and guy wires up to 11,000lbf/5000 kgf and up to 1"/25mm diameter. Manufactured using an integral, high accuracy, Bluetooth module the COLT transmits load data wirelessly to any smart device running our Android or iOS app. Typical applications include cell tower or flare stack guy lines, median barrier cables and fall arrest systems.



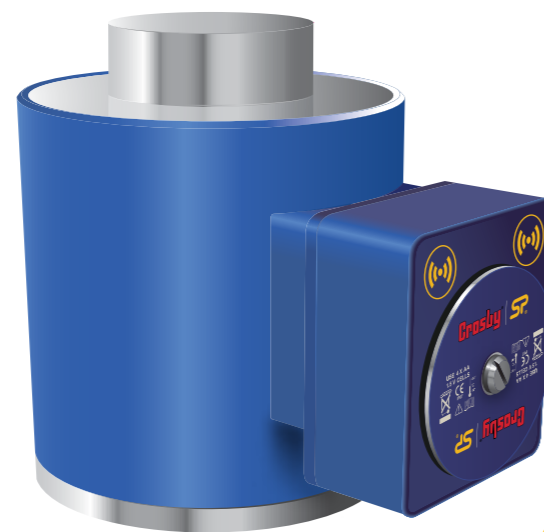
Wireless Dynamometer [RLP]

Wireless Running Line Tensiometer [TIMH]



On-board Display Dynamometer [LLP]

Wireless Compression Load Cell [WNI]



Clamp on Line Tensionmeter [COLT]



Wireless Loadshackle [WLS]



Safety, reliability and quality are paramount in the lifting and rigging industries and so Straightpoint designs and manufactures to the highest standards including ISO9001, ATEX and DNV Type Approval whilst holding memberships in key associations such as LEEA, AWRP, SC&RA and ASME.

TENSIOMETER (TIMH)

Manufactured for dockside, marine, offshore, towage, salvage and winch applications. It is particularly useful where there is no anchor or dead end on the line to rig an SP RLP or WLS load cell to measure tension force at speeds up to 20m/min or 65ft/min. The TIMH can be used to monitor line tension and record or alert to overload or slack rope conditions.

LOADLINK PLUS (LLP)

The Loadlink plus is the ideal choice for applications where the operator is close to the load or requires hands-free operation in applications such as chain block tensioning. The LLP features an easy to read 25mm/1" LCD display and full function push button controls for tare, choice of units (lbs, kg, kN, and tonnes), peak hold and pre-set tare. To keep the operator safe the LLP is fitted with a 90db audible alarm and an overload counter.

LOADSHACKLE (WLS)

Based on industry leading shackles from Crosby and GN Rope, each SP WLS is proof tested, then fitted with an anodized aluminium electronics enclosure housing the wireless load cell technology. Protected to NEMA6 and is often found in use in marine and off-shore applications, entertainment rigging and pull testing providing vital load monitoring feedback to lift engineers at a range of up to 2300ft to either our SW-HHP handheld display or load monitoring software.

SOFTWARE (SW-MWLC)

Designed for use on Windows tablets or laptops. SW-MWLC can connect to up to 100 SP wireless load cells simultaneously and allows the operator to data-log at speeds up to 200Hz, calculate & display total loads. Advanced features include the ability to map custom display screens and design html reports.