

Proud to serve the following industries:

Oil, Gas and Petrochemical

**Intrinsically safe load monitoring systems
approved for use in hazardous areas 0,1 & 2**

All items in stock

Crosby | **SP** **straightpoint**
know the load



Crosby | **SP**

Crosby | Straightpoint

Unit 9, Dakota Park, Downley Road, Havant, Hampshire, PO9 2NJ UK · Tel: +44 (0)2392 484491
2801 Dawson Road, Tulsa, OK 74110 · USA · Tel: +1 (918) 834-4611

Part No: SU3982 - 9992542



**ATEX/IECEx
Load Monitoring
Product Information**

straightpoint.com



Straightpoint's expanded range of ATEX products

Straightpoint, manufacturers of force measurement, load monitoring and suspended weighing load cell equipment have launched ATEX and IECEx versions of its most popular wireless products the Radiolink plus, compression loadcells, Loadshackles, Loadpins and the TIMH running line tensiometer.

All meet Zone 0, 1 and 2 hazardous area classification and conforming with the directive — 2014/34/EU.

This range of products connect seamlessly with the Straightpoint ATEX Handheld plus which has a massive wireless range of 700m/2300ft, or they may be connected to the range of load monitoring software in a safe area.

All boast classification in the three zones, including 0 (an area in which an explosive gas atmosphere is present continuously or for long periods)—unprecedented in wireless below the hook force measurement technology.

The criteria of ATEX and IECEx are broadly similar, although the former is widely accepted throughout Europe, while the latter is required in many other global markets.

These hazardous area versions of load cells and wireless handheld displays contain several safety components that permit use in Zone 0 environments.

A separate quarantine area has been created at Straightpoint's UK manufacturing plant and all production personnel have been specially trained in the assembly of the explosion proof units.

Straightpoint's ATEX and IECEx Load Monitoring Instruments have been stringently tested and certification issued by SIRA, a key driver of the ATEX and IECEx certification movement.



Wireless Tension Load Cell

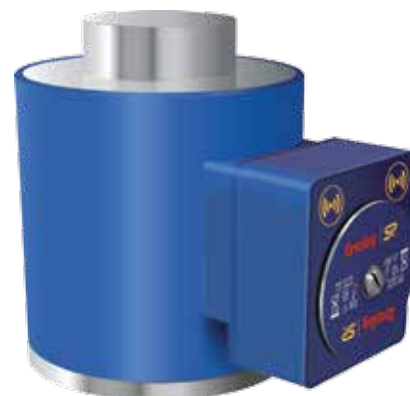
An intrinsically safe load cell, this new version of the bestselling Radiolink plus is capable of both weighing and dynamic load monitoring in hazardous environments such as on and offshore oil, gas and chemical industries.

Available from stock in capacities from 1t to 300t, constructed from highquality aircraft grade aluminium and featuring an advanced internal design structure.

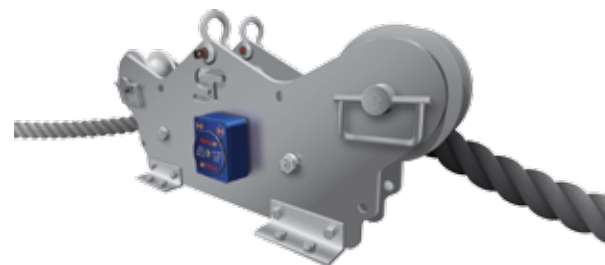
Wireless Compression Load Cell

The Straightpoint Wireless Compression Load Cell is taking the heavy lift, offshore and structural weighing industry by storm.

Machined from high grade stainless steel, providing excellent strength and corrosion resistance it offers wireless free weighing and centre of gravity measurement with our software solutions.



Wireless Running Line Tensiometer



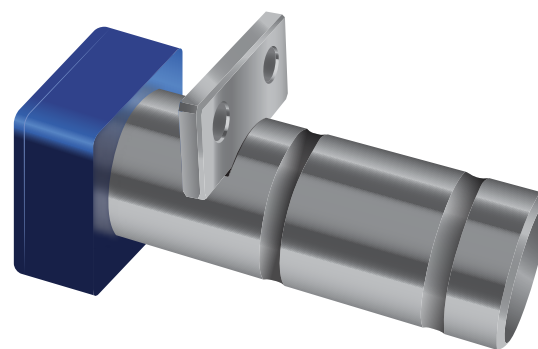
Straightpoint TIMH range is a Running Line Tensiometer built with dockside, marine, offshore, towage and salvage applications in mind.

Now available ATEX and IECEx approved to Ex ia II T4 Ga for use in zones 0, 1 and 2 hazardous environments (gas) and is designed for wire rope tension monitoring in applications with challenging hazardous areas.

All approved for use in hazardous zones 0, 1 and 2

For use in hazardous environments Straightpoint ATEX/IECEx load monitoring systems are designed for the on and offshore oil and gas, chemical and other industries with challenging hazardous areas.

Wireless Load Pin



Often a customised solution they are manufactured from high tensile stainless steel and are normally supplied complete with an anti-rotation plate as a wireless solution with range of up to 700 metres or 2300 feet.



Wireless Handcontrol and Software

SW-HHP-ATEX handheld controller for use in hazardous area or SW-MWLC wireless Windows PC data logging software package in the safe area.

Our wireless data logging software allows for simultaneous control, display and real time data logging of up to 100 Straightpoint telemetry load cells. Logged data is captured in a .csv file format and opens in MS Excel providing easy visual presentation, analysis of logged data, and simple test certificate generation.

Wireless Loadshackle

Available from stock in capacities 3.25t to 500t and available up to 4000t. A Straightpoint Loadshackle provides the perfect solution to for lower headroom applications our wireless load shackles are also the first choice for service trucks and riggers in the oilfields.

It is manufactured from Crosby's industry leading 2130 Carbon and 2140 Alloy Bolt Type Anchor Shackles (3.25te 120te) and the GN H10 Alloy Bolt Type Anchor Shackle (200te on up).



Making the oil and gas industry a safer place

Explosive atmospheres in the workplace can be caused by flammable gases, mists or vapours or by combustible dusts. Explosions can cause loss of life and serious injuries as well as significant damage.

Lifting and hoisting operations are among the major causes of fatalities and serious incidents.

In the oil and gas centres of Scotland, Scandinavia and the gulf states of the USA the Straightpoint range of ATEX/IECEx products are the industry safe standard for weighing and dynamic load monitoring applications.

A rugged handheld display with easy to change AA batteries, no external antennae and industry leading wireless range allow the operator to stand at a safe distance in the most hazardous areas up to zone 0.



straightpoint.com