

Horizontal Clamps

IPH10E



The IPH10E / IPH10JE horizontal lifting clamps are for use in the lifting and transfer in horizontal position of non-sagging materials or of bundles of non-sagging material. These clamps must be used in pairs or more.

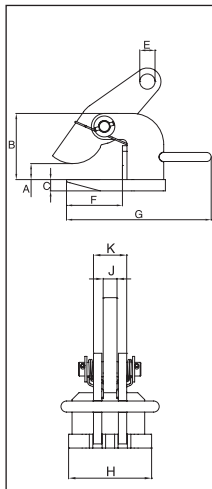
For Horizontal Lifting and Transfer

- Available in capacities of .75 thru 25 metric tons.
- Wide variety of jaw openings available: 0 to 120mm.
- Welded alloy steel body for strength and smaller size. Forged alloy components, where required.
- Equipped with handle for easy placement.
- Individually Proof Tested to 2 times the Working Load Limit with certification.
- Company name (CrosbyIP), logo, Working Load Limit and jaw opening permanently stamped on body.
- Each product is individually serialized, with the serial number and Proof Load test date stamped on body. Serial number is included on the test certificate with maintenance and warranty logbook.
- Maintenance replacement parts are available.
- Manufactured by a ISO 9001 facility.
- All sizes are RFID EQUIPPED.

IPOHZ



The IPOHZ horizontal lifting clamp is to be used for lifting and transferring, in the horizontal position, of thin sheet and other materials that will sag or bend when lifted. These clamps must be used in pairs or more.



Model IPH10E: Jaw opening range 0 to 60mm

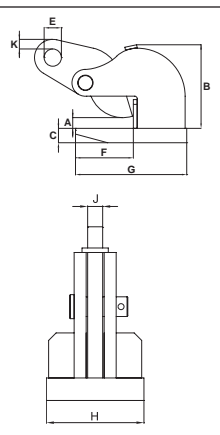
Model	Working Load Limit (Per Pair) (t)*	IPHTONZ Stock No.	Weight Each (kg.)	Dimensions (mm)								
				Jaw A	B	C	E	F	G	H	J	K
IPH10E	2	2703542	5.50	0 - 60	117	16	22	109	256	110	20	40
IPH10E	3	2703543	7.50	0 - 60	117	20	26	109	266	120	20	48
IPH10E	4.5	2703544	10.5	0 - 60	132	25	30	104	280	130	20	48
IPH10E	6	2703545	13.0	0 - 60	143	25	36	123	320	130	20	48
IPH10E	9	2703546	18.5	0 - 60	157	30	43	133	330	140	25	62
IPH10E	12	2703547	21.5	0 - 60	172	30	47	141	353	150	25	62
IPHTOZ	25	2705119	38.0	0 - 60	220	40	47	183	317	250	25	22

* Design Factor based on EN 13155 and ASME B30.20.

Model IPH10JE: Jaw opening range 60 to 120mm

Model	Working Load Limit (Per Pair) (t)*	IPH10JE Stock No.	Weight Each (kg.)	Dimensions (mm)									
				Jaw A	B	C	E	F	G	H	J	K	L
IPH10JE	3	2703553	9.00	60-120	177	20	26	109	266	120	20	48	11
IPH10JE	4.5	2703554	12.0	60-120	192	25	30	104	280	130	20	48	12
IPH10JE	6	2703555	15.0	60-120	203	25	36	123	320	130	20	48	14
IPH10JE	9	2703556	20.5	60-120	217	30	43	133	330	140	25	62	16
IPH10JE	12	2703557	24.0	60-120	232	30	47	141	353	150	25	62	17

* Design Factor based on EN 13155 and ASME B30.20.



Model IPOHZ: Jaw opening range 0 to 60mm

Model	Working Load Limit (Per Pair) (t)*	IPOHZ Stock No.	Weight Per Pair (kg.)	Dimensions (mm)								
				Jaw A	B	C	E	F	G	H	J	K
IPOHZ	0.75	2705401	3.0	0 - 30	94	16	16	70	118	81	12	12
IPOHZ	1.5	2705402	5.5	0 - 45	133	16	22	125	192	100	16	12
IPOHZ	3	2705403	8.0	0 - 45	137	20	26	125	200	120	20	10
IPOHZ	4.5	2705404	8.5	0 - 45	138	25	30	126	220	120	20	10
With larger jaw opening												
IPOHZ	6	2705405	15.5	0 - 60	171	30	36	135	235	130	20	20
IPOHZ	9	2705406	20.5	0 - 60	211	30	43	166	276	160	25	20
IPOHZ	12	2705407	38.0	0 - 60	217	40	47	168	294	190	25	19

* Design Factor based on EN 13155 and ASME B30.20.

