

Shipbuilding Clamps: Bulbprofiles

IPBTO10



The IPBTO/10 shipbuilding clamp is used as a temporary tackle eye in spaces which have been reinforced with HP (bulb) profiles such as engine rooms and shipsections. This clamp is fitted with a screwed spindle for easy attachment of the clamp. The moment a load is applied, the clamp is automatically fixed.

For use as a temporary tackle eye in spaces which have been reinforced with HP (bulb) profiles such as engine rooms and shipsections.

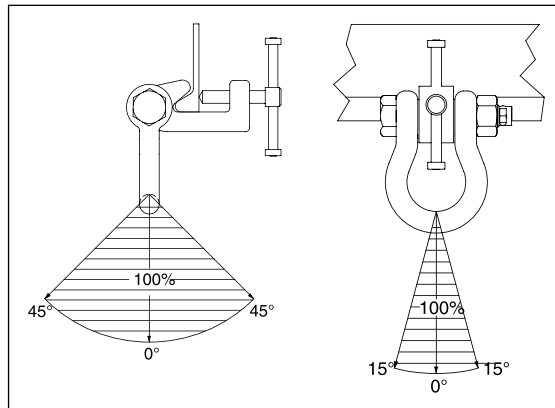
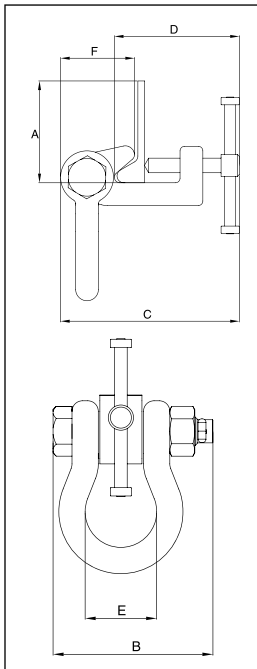
- Available in capacities of 1.5 thru 6 metric tons.
- Wide variety of jaw openings available: HP 6.25" to HP 17.00".
- Welded alloy steel body for strength and smaller size. Forged alloy components, where required.
- Individually Proof Tested to 2 times the Working Load Limit with certification.
- Company name (CrosbyIP), logo, Working Load Limit and jaw opening permanently stamped on body.
- Each product is individually serialized, with the serial number and Proof Load test date stamped on body. Serial number is included on the test certificate with maintenance and warranty logbook.
- Maintenance replacement parts are available.
- Manufactured by a ISO 9001 facility.

Load Rated

Model IPBTO10

Model	Working Load Limit (t)*	IPBTO10 Stock No.	Weight Each (lbs.)	Dimensions (in.)					
				Jaw A	B	C	D	E	F
IPBTO10	1.5	2700980	9.48	HP 6.25-9.44	5.39	7.4-8.23	5.08-5.91	2.68	3.19
IPBTO10	3	2700986	13.2	HP 9.44-12.56	5.39	7.4-8.54	5.71-6.85	2.68	3.07
IPBTO10	6	2700991	28.7	HP 11.75-17.00	7.28	10.03-11.69	7.68-9.29	3.86	4.02

* Design Factor based on EN 13155 and ASME B30.20.



Crosby Lifting
Clamps