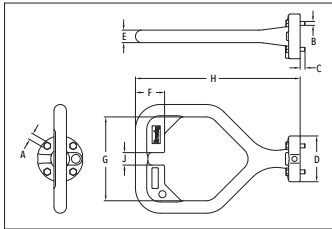


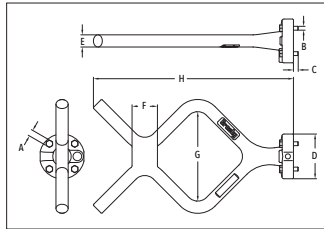
ROV Handles Options and Configurations



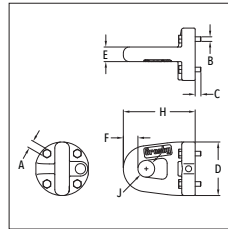
“D” Handle



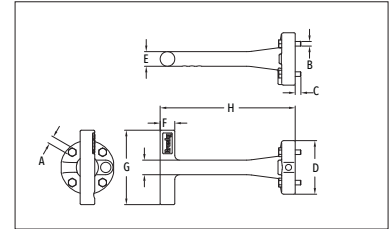
“F” Handle



“Eye” Handle



“T” Handle



- New Interchangeable handles for ROV shackle bolts.
- For use with G-2100 and G-2110 ROV shackles only.
- Handles are stainless steel and Painted fluorescent orange.
- “D” and “F” handle kits available containing handle, retaining bolts, and individual packet of Loctite for easy installation.
- Handles are RFID equipped.



NOTE: ROV Hooks available on page 130 and 131.

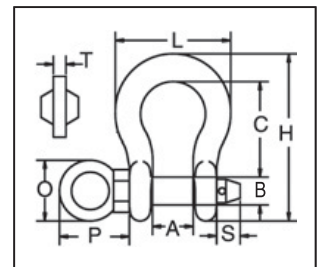
G-42100H ROV Handles

Handle Style	Stock No.	Weight Each (lb)	Dimensions (in)									
			A	B	C	D	E	F	G	H	J	K
D	1021324	4.5	0.28	0.24	0.29	2.75	0.75	1.75	5.04	9.9	0.75	-
F	1021315	5.0	0.28	0.24	0.29	2.75	0.75	1.56	5.5	12.29	-	-
T	1021306	2.4	0.28	0.24	0.29	2.75	0.75	0.75	3.82	6.18	-	0.75
Eye	1021333	2.1	0.28	0.24	0.29	2.75	0.75	0.75	-	3.69	0.86	-



G-209R ROV SHACKLE

- Capacities from 6-1/2t through 55t.
- Forged Steel, Quenched & Tempered, with alloy pins.
- Working Load Limit permanently shown on every shackle.
- Fatigue rated.
- **QUIC-CHECK®** deformation and angle indicators forged on the bow.
- All ROV shackle bows are galvanized, then painted fluorescent yellow.
- Look for the Red Pin® . . . the mark of genuine Crosby quality.



Load Rated

Fatigue Rated



SEE APPLICATION INFORMATION

On Page 92 of the General Catalog
Para Español: www.thecrosbygroup.com

G-209R Subsea Shackles

Working Load Limit (t)*	G-209R Stock No.	Weight Each (lb)	Dimensions (in)									
			A +/- .25	B	C	H	L	O	P	S	T	
6-1/2	1020872	3.62	1.44	1.00	3.31	5.83	4.03	1.18	2.28	.65	.39	
8-1/2	1020902	5.03	1.69	1.13	3.75	6.56	4.69	1.18	2.40	.73	.39	
9-1/2	1020932	7.41	1.81	1.25	4.25	7.47	5.16	2.28	3.27	.75	.47	
12	1020952	9.50	2.03	1.38	4.69	8.25	5.75	2.28	3.31	.89	.47	
13-1/2	1020972	13.53	2.25	1.50	5.25	9.16	6.38	2.36	3.58	.91	.59	
17	1020992	17.20	2.38	1.63	5.75	10.00	6.88	2.36	3.66	1.18	.59	
25	1021102	27.78	2.88	2.00	7.00	12.34	8.86	2.16	4.49	1.14	.69	
35	1021125	45.00	3.25	2.25	7.75	13.68	9.97	2.60	5.12	1.18	.79	
55	1021158	85.75	4.13	2.75	10.50	17.84	12.87	2.76	5.63	1.50	.98	

* Minimum Ultimate Load is 5 times the Working Load Limit. Maximum Proof Load is 2.0 times the Working Load Limit.