



## HHP App

### SUPPLIED FREE WITH ANY SP BLUETOOTH ENABLED LOAD CELL

The HHP app allows the operator to stand back and remotely monitor the level of force being measured by your SP product in real-time, without the need for troublesome cabling.

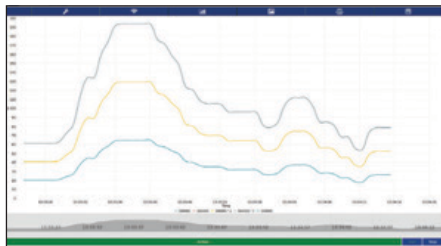
- Connect up to 8 smart devices wirelessly to any Bluetooth enabled wireless SP device
- Operates up to 100m/328ft to provide a wider prospective of working area especially in high risk environment

## INSIGHT Software

INSIGHT software, supplied with an SW-D USB wireless dongle, connects up to 126 Straightpoint wireless load cells simultaneously onto any Windows tablet or laptop.

INSIGHT Features:

- **Multi-channel display and data logging mode** – view and log load data from connected load cells plus totals loads live on screen and directly into a .csv file for later analysis at speeds of up to 200Hz.
- **Visualization mode** – For complicated lifts import a photo of the lift and drag and drop load cell displays – make the screen look like the lift.
- **Center of gravity mode** – Connect to SP’s range of wireless compression load cells and use this feature to weigh and calculate the centre of gravity of large items and structures.



Multi-channel display mode and data logging mode



Visualization mode

Safety, reliability and quality are paramount in the lifting and rigging industries Straightpoint designs and manufactures to the highest standards including ISO9001, ATEX and DNV Type approvals.